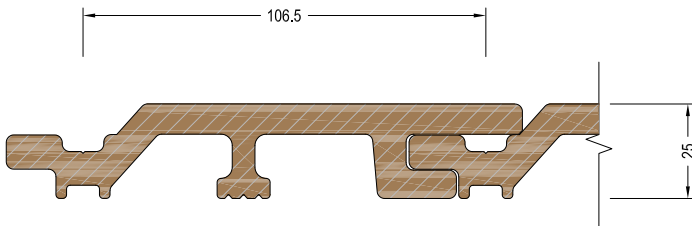
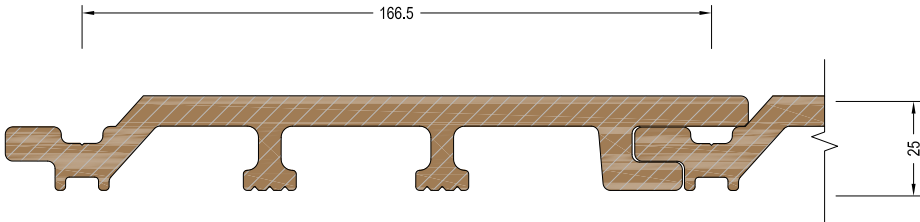


2.1

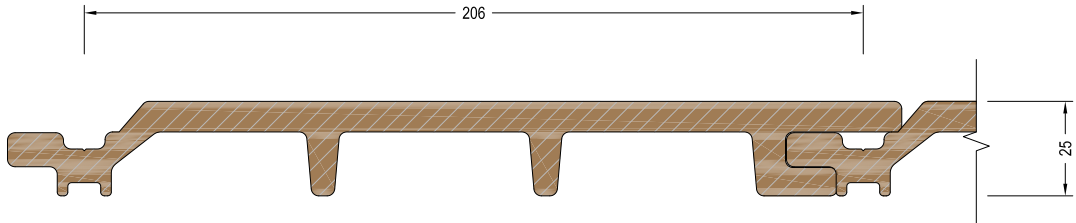
WC13625



WC20025



WC24025



1. Structure : By Others

- 1.1 Concrete
- 1.2 Timber
- 1.3 Internal Lining
- 1.4 Insulation
- 1.5 Fibre Cement RWU
- 1.6 Window Joinery
- 1.7 Approved Sealant on PEF Rod to suit gap

2. Cladding Elements : Supply By SPS

- 2.1 InnoClad Vertical Shiplap Weatherboard Cladding
- 2.2 H3.2 70x20mm Castellated Timber Cavity Battens - Nailed/Screwed @ Manut. Spec +/-
- 2.3 AF3000H1 : J-Mould Alu. Extrusion
- 2.4 AF4000H9 : Drained J-Mould Alu. Extrusion
- 2.5 AF3000H8-Internal W-Corner Alu. Extrusion
- 2.6 AF3000H2 : External Corner Alu. Extrusion

3. Suggested Membrane & Tapes :

- Supply By Prodlma
- 3.1 Solitex Extasana - Weathertightness Membrane
- 3.2 Tescon Extoseal Sill Tape -150mm
- 3.3 Tescon Extora Fabric Flashing Tape -60mm
- 3.4 Tescon AdhisoWS - Wet Seal Adhesion Tape

4. Fixings

- 4.1 SS304 8gx20mm CSK ST Screw #2 Sq,Dr
- 4.2 SS304 8gx35mm PH ST Screw #2 Sq,Dr
- 4.3 SS304 10g x40 WingNek T138 - T20,Dr

5. Aluminium Flashings

- 5.1 AL. 1.6mm Custom Folded

**SPS BUILDING**

ROOFING & BUILDING PRODUCTS

SPS Roofing and Building Limited  
220B Bush Road, Rosedale, Auckland, New Zealand,  
T : +64 9 415 2669 | www.spsbuilding.co.nz

Sheet Title:

Cladding Schedule  
Typical System Schedule  
Vertical Shiplap Cladding



Sheet Status:

Architectural  
Resource  
For Information & Design

Sheet Number:

IC-V20-A01

Revision:

v1.3

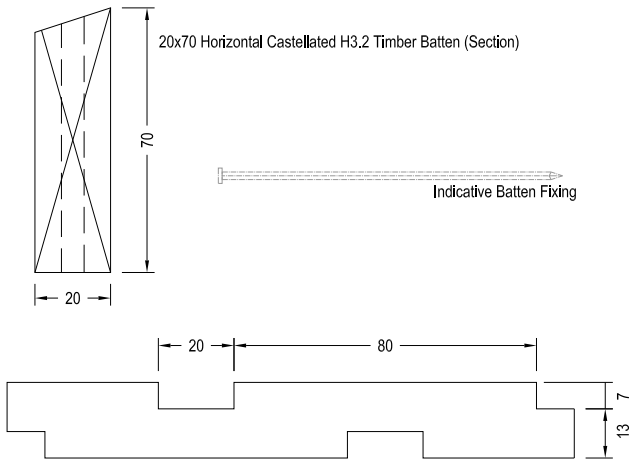
Revision Date

Mar. 2020

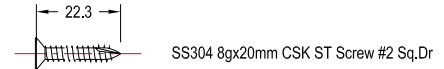
Scale @ A4:

1:2

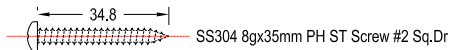
2.2



4.1



4.2

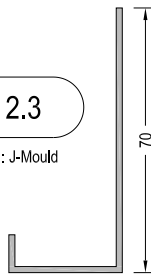


4.3



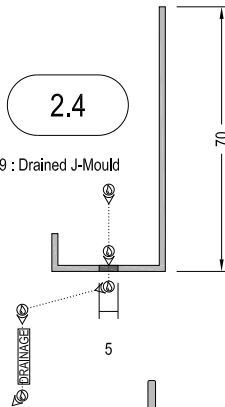
2.3

AF3000H1 : J-Mould



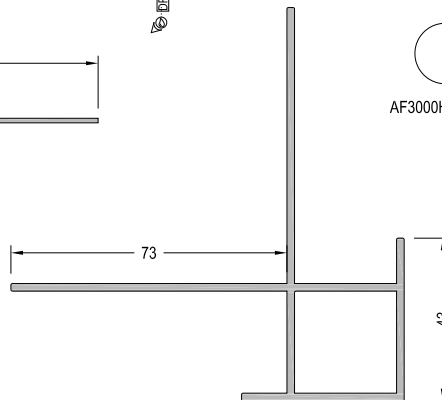
2.4

AF4000H9 : Drained J-Mould



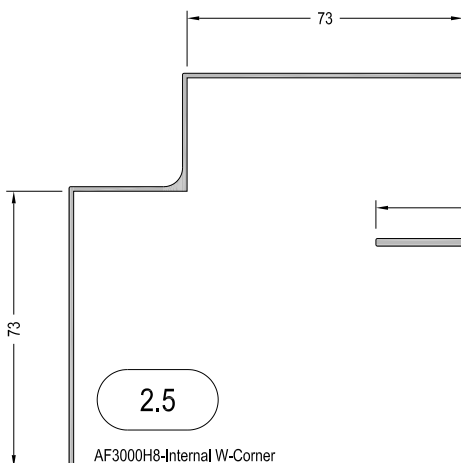
2.6

AF3000H2- External Corner



2.5

AF3000H8-Internal W-Corner



## 1. Structure : By Others

- 1.1 Concrete
- 1.2 Timber
- 1.3 Internal Lining
- 1.4 Insulation
- 1.5 Fibre Cement RWU
- 1.6 Window Joinery
- 1.7 Approved Sealant on PEF Rod to suit gap

## 2. Cladding Elements : Supply By SPS

- 2.1 InnoClad Vertical Shiplap Weatherboard Cladding
- 2.2 H3.2 70x20mm Castellated Timber Cavity Battens - Nailed/Screwed @ Manuf. Spec. 4/4
- 2.3 AF3000H1 : J-Mould  
Alu. Extrusion
- 2.4 AF4000H9 : Drained J-Mould  
Alu. Extrusion
- 2.5 AF3000H8-Internal W-Corner  
Alu. Extrusion
- 2.6 AF3000H2 : External Corner  
Alu. Extrusion

## 3. Suggested Membrane &amp; Tapes :

- Supply By Proclima
- 3.1 Solitex Extasana -  
Weatherightness Membrane
- 3.2 Tescon Extoseal Sill Tape -150mm
- 3.3 Tescon Extora Fabric Flashing Tape -60mm
- 3.4 Tescon AdhisoWS - Wet Seal Adhesion Tape

## 4. Fixings

- 4.1 SS304 8gx20mm CSK ST Screw #2 Sq.Dr
- 4.2 SS304 8gx35mm PH ST Screw #2 Sq.Dr
- 4.3 SS304 10g x40 WingNek Ti38 - T20,Dr

## 5. Aluminium Flashings

- 5.1 AL. 1.6mm Custom Folded

**SPS BUILDING**
**ROOFING & BUILDING PRODUCTS**

SPS Roofing and Building Limited  
220B Bush Road, Rosedale, Auckland, New Zealand,  
T : +64 9 415 2669 | www.spsbuilding.co.nz

Sheet Title:

Accessory Schedule  
Typical System Schedule  
Vertical Shiplap Cladding

Sheet Status:

Architectural  
Resource  
For Information & Design

Sheet Number:

**IC-V20-A02**

Revision:

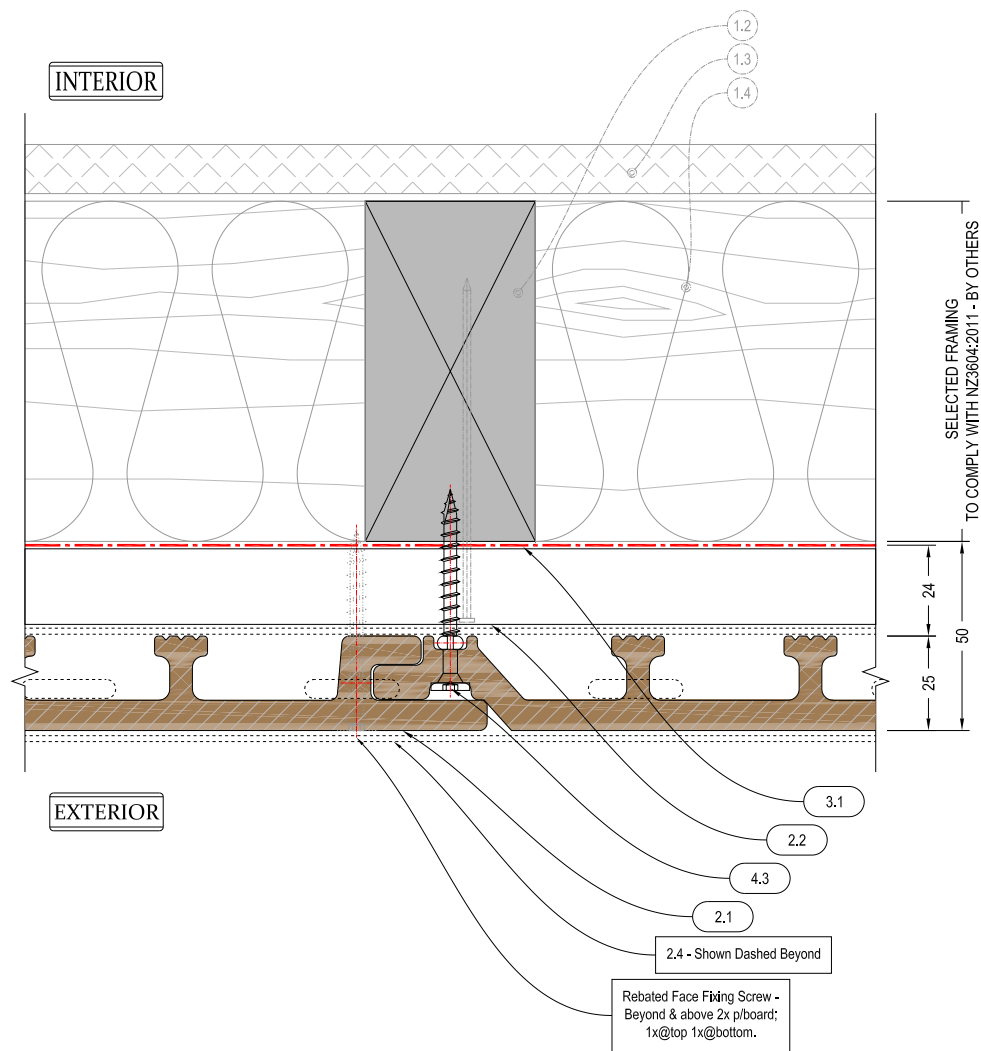
**v1.3**

Revision Date

Mar. 2020

Scale @ A4:

1:2



1. Structure : By Others

- 1.1 Concrete
- 1.2 Timber
- 1.3 Internal Lining
- 1.4 Insulation
- 1.5 Fibre Cement RWU
- 1.6 Window Joinery
- 1.7 Approved Sealant on PEF Rod to suit gap

2. Cladding Elements : Supply By SPS

- 2.1 InnoClad Vertical Shiplap Weatherboard Cladding
- 2.2 H3.2 70x20mm Castellated Timber Cavity Battens - Nailed/Screwed @ Manuf. Spec 4/4
- 2.3 AF3000H1 : J-Mould  
Alu, Extrusion
- 2.4 AF4000H9 : Drained J-Mould  
Alu, Extrusion
- 2.5 AF3000H8-Internal W-Corner  
Alu, Extrusion
- 2.6 AF3000H2 : External Corner  
Alu, Extrusion

3. Suggested Membrane & Tapes :

- Supply By Proclima
- 3.1 Solitex Extasana - Weathertightness Membrane
- 3.2 Tescon Extoseal Sill Tape -150mm
- 3.3 Tescon Extora Fabric Flashing Tape -60mm
- 3.4 Tescon AdhisoWS - Wet Seal Adhesion Tape

4. Fixings

- 4.1 SS304 8x20mm CSK ST Screw #2 Sq,Dr
- 4.2 SS304 8x35mm PH ST Screw #2 Sq,Dr
- 4.3 SS304 10g x40 WingNek Ti38 - T20,Dr

5. Aluminium Flashings

- 5.1 AL, 1.6mm Custom Folded

**SPS BUILDING**

ROOFING & BUILDING PRODUCTS

SPS Roofing and Building Limited  
220B Bush Road, Rosedale, Auckland, New Zealand,  
T : +64 9 415 2669 | www.spsbuilding.co.nz

Sheet Title:

Vertical Joint  
Typical Plan Detail  
Vertical Shiplap Cladding

Original In Colour

Sheet Status:

Architectural  
Resource  
For Information & Design

Sheet Number:

IC-V20-001

Revision:

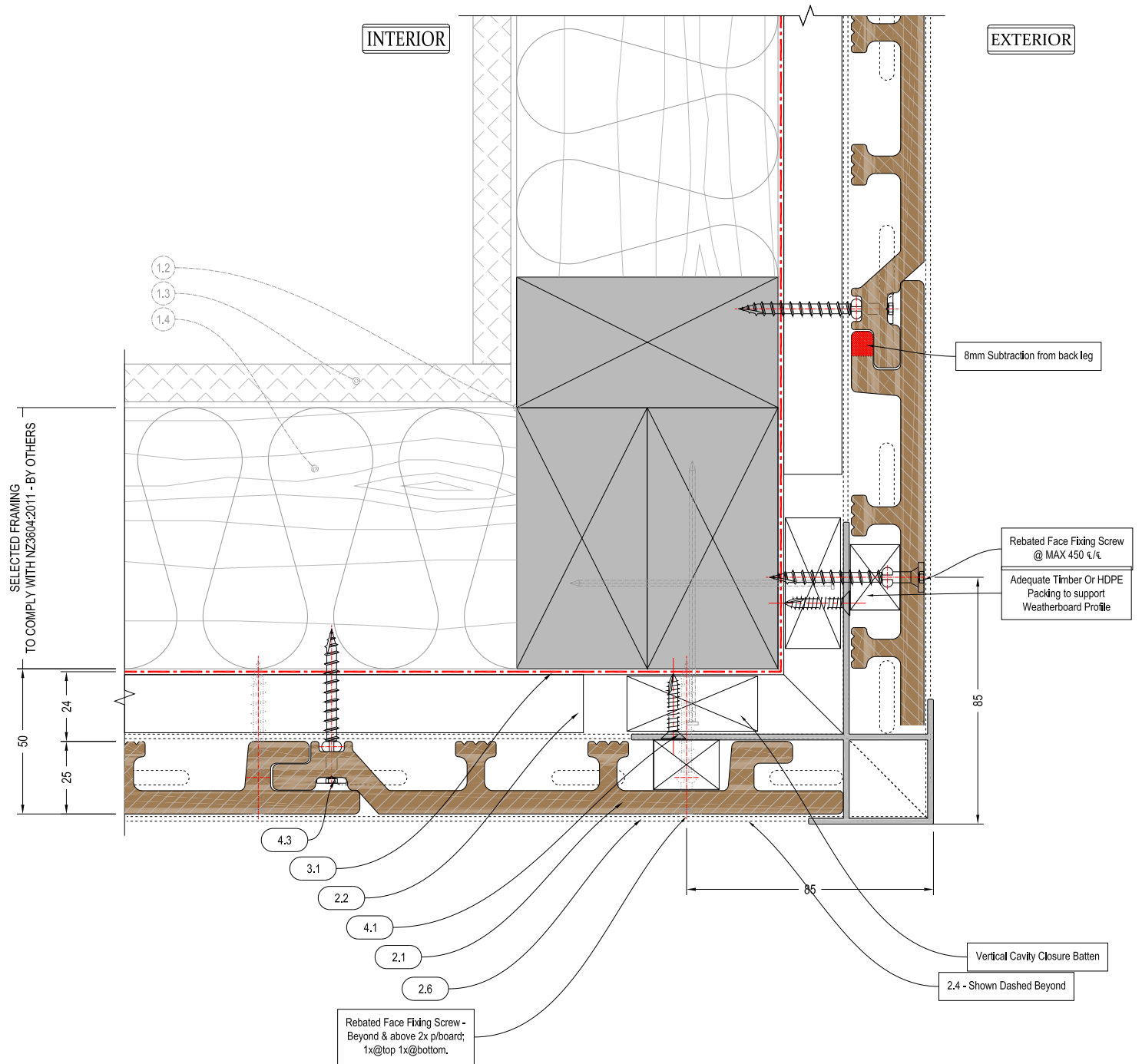
v1.3

Revision Date

Mar. 2020

Scale @ A4:

1:2



## 1. Structure : By Others

- 1.1 Concrete
- 1.2 Timber
- 1.3 Internal Lining
- 1.4 Insulation
- 1.5 Fibre Cement RWU
- 1.6 Window Joinery
- 1.7 Approved Sealant on PEF Rod to suit gap

## 2. Cladding Elements : Supply By SPS

- 2.1 InnoClad Vertical Shiplap Weatherboard Cladding
- 2.2 H3.2 70x20mm Castelled Timber Cavity Battens - Nailed/Screwed @ Manuf. Spec €/€
- 2.3 AF3000H1 : J-Mould Alu, Extrusion
- 2.4 AF4000H9 : Drained J-Mould Alu, Extrusion
- 2.5 AF3000H8-Internal W-Corner Alu, Extrusion
- 2.6 AF3000H2 : External Corner Alu, Extrusion

## 3. Suggested Membrane &amp; Tapes :

- Supply By Prodlina
- 3.1 Solitex Extasana - Weathertightness Membrane
- 3.2 Tescon Extoseal Sill Tape -150mm
- 3.3 Tescon Extora Fabric Flashing Tape -60mm
- 3.4 Tescon AdhisoWS - Wet Seal Adhesion Tape

## 4. Fixings

- 4.1 SS304 8x20mm CSK ST Screw #2 Sq,Dr
- 4.2 SS304 8x35mm PH ST Screw #2 Sq,Dr
- 4.3 SS304 10g x40 WingNek Ti38 - T20,Dr

## 5. Aluminium Flashings

- 5.1 AL 1.6mm Custom Folded

# SPS BUILDING

ROOFING & BUILDING PRODUCTS

SPS Roofing and Building Limited  
220B Bush Road, Rosedale, Auckland, New Zealand,  
T : +64 9 415 2669 | www.spsbuilding.co.nz

Sheet Title:

External Corner  
Typical Plan Detail  
Vertical Shiplap Cladding

Original In Colour

Sheet Status:

Architectural  
Resource  
For Information & Design

Sheet Number:

IC-V20-002

Revision:

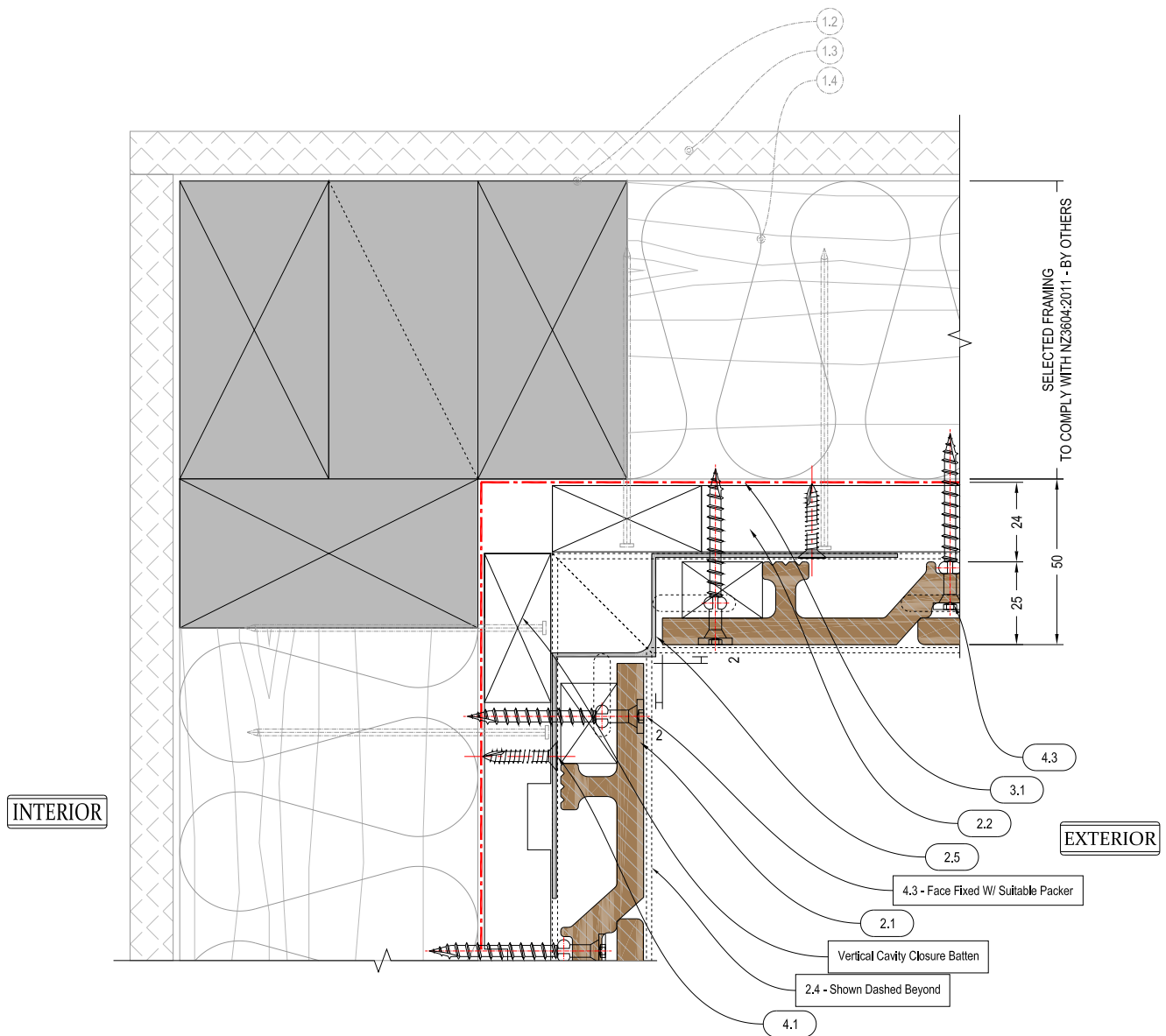
v1.3

Revision Date

Mar. 2020

Scale @ A4:

1:2



## 1. Structure : By Others

- 1.1 Concrete
- 1.2 Timber
- 1.3 Internal Lining
- 1.4 Insulation
- 1.5 Fibre Cement RWU
- 1.6 Window Joinery
- 1.7 Approved Sealant on PEF Rod to suit gap

## 2. Cladding Elements : Supply By SPS

- 2.1 InnoClad Vertical Shiplap Weatherboard Cladding
- 2.2 H3,2 70x20mm Castigated Timber Cavity Battens - Nailed/Screwed @ Manuf. Spec 1/4"
- 2.3 AF3000H1 : J-Mould  
Alu, Extrusion
- 2.4 AF4000H9 : Drained J-Mould  
Alu, Extrusion
- 2.5 AF3000H8-Internal W-Corner  
Alu, Extrusion
- 2.6 AF3000H2 : External Corner  
Alu, Extrusion

## 3. Suggested Membrane &amp; Tapes :

- Supply By Proclima
- 3.1 Solitex Extasana -  
Weatherightness Membrane
- 3.2 Tescon Extoseal Sill Tape -150mm
- 3.3 Tescon Extora Fabric Flashing Tape -60mm
- 3.4 Tescon AdhisoWS - Wet Seal Adhesion Tape

## 4. Fixings

- 4.1 SS304 8x20mm CSK ST Screw #2 Sq.Dr
- 4.2 SS304 8x35mm PH ST Screw #2 Sq.Dr
- 4.3 SS304 10g x40 WingNek Ti38 - T20.Dr

## 5. Aluminium Flashings

- 5.1 AL, 1.6mm Custom Folded

# SPS BUILDING

ROOFING & BUILDING PRODUCTS

SPS Roofing and Building Limited  
220B Bush Road, Rosedale, Auckland, New Zealand,  
T : +64 9 415 2669 | www.spsbuilding.co.nz

Sheet Title:

Internal Corner  
Typical Plan Detail  
Vertical Shiplap Cladding



Sheet Status:

Architectural  
Resource  
For Information & Design

Sheet Number:

IC-V20-003

Revision:

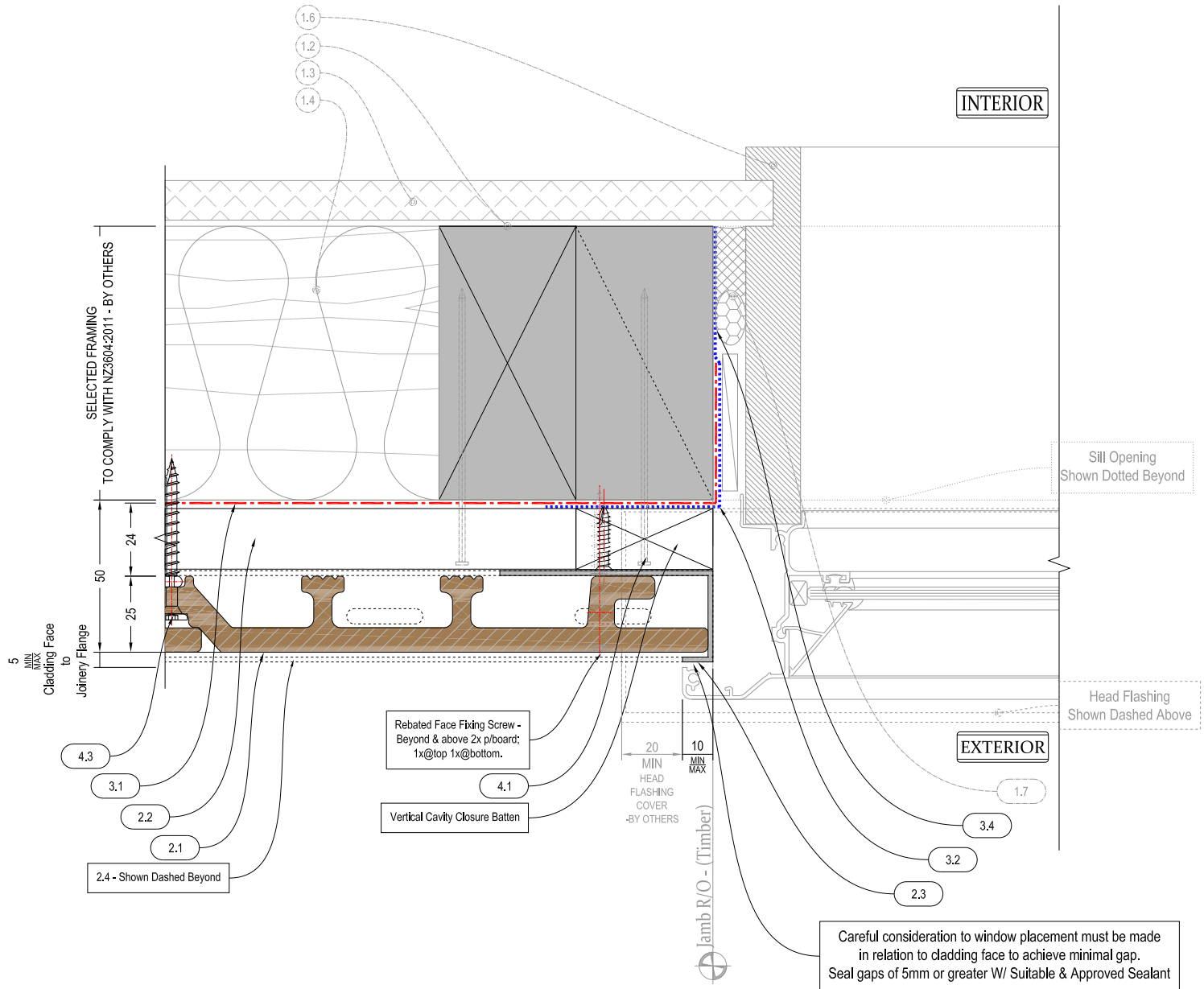
v1.3

Revision Date

Mar. 2020

Scale @ A4:

1:2



## 1. Structure : By Others

- 1.1 Concrete
- 1.2 Timber
- 1.3 Internal Lining
- 1.4 Insulation
- 1.5 Fibre Cement RWU
- 1.6 Window Joinery
- 1.7 Approved Sealant on PEF Rod to suit gap

## 2. Cladding Elements : Supply By SPS

- 2.1 InnoClad Vertical Shiplap Weatherboard Cladding
- 2.2 H3.2 70x20mm Castellated Timber Cavity Battens - Nailed/Screwed @ Manuf. Spec 1/1
- 2.3 AF3000H1 : J-Mould Alu, Extrusion
- 2.4 AF4000H9 : Drained J-Mould Alu, Extrusion
- 2.5 AF3000H8-Internal W-Corner Alu, Extrusion
- 2.6 AF3000H2 : External Corner Alu, Extrusion

## 3. Suggested Membrane &amp; Tapes :

- Supply By Proclima
- 3.1 Solitex Extasana - Weathertightness Membrane
- 3.2 Tescon Extoseal Sill Tape -150mm
- 3.3 Tescon Extora Fabric Flashing Tape -60mm
- 3.4 Tescon AdhisoWS - Wet Seal Adhesion Tape

## 4. Fixings

- 4.1 SS304 8gx20mm CSK ST Screw #2 Sq,Dr
- 4.2 SS304 8gx35mm PH ST Screw #2 Sq,Dr
- 4.3 SS304 10g x40 WingNek T138 - T20,Dr

## 5. Aluminium Flashings

- 5.1 AL, 1.6mm Custom Folded

# SPS BUILDING

**ROOFING & BUILDING PRODUCTS**

SPS Roofing and Building Limited  
220B Bush Road, Rosedale, Auckland, New Zealand,  
T : +64 9 415 2669 | www.spsbuilding.co.nz

Sheet Title:

Window Jamb  
Typical Section Detail  
Vertical Shiplap Cladding

Sheet Status:

Architectural  
Resource  
For Information & Design

Sheet Number:

IC-V20-004

Revision:

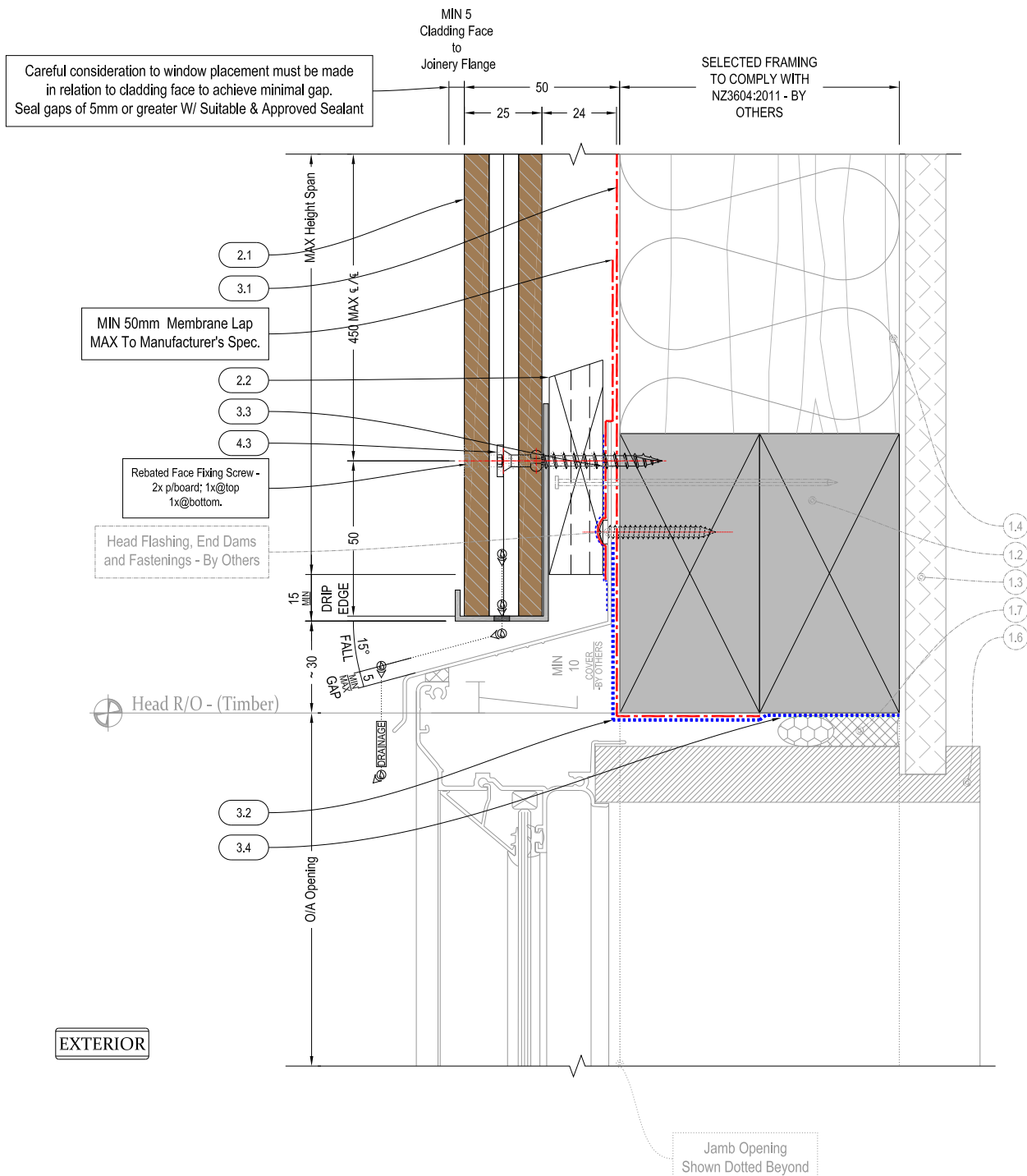
v1.3

Revision Date

Mar. 2020

Scale @ A4:

1:2



## 1. Structure : By Others

- 1.1 Concrete
- 1.2 Timber
- 1.3 Internal Lining
- 1.4 Insulation
- 1.5 Fibre Cement RWU
- 1.6 Window Joinery
- 1.7 Approved Sealant on PEF Rod to suit gap

## 2. Cladding Elements : Supply By SPS

- 2.1 InnoClad Vertical Shiplap Weatherboard Cladding
- 2.2 H3.2 70x20mm Castellated Timber Cavity Battens - Nailed/Screwed @ Manuf. Spec. 1/1
- 2.3 AF3000H1 : J-Mould Alu. Extrusion
- 2.4 AF4000H9 : Drained J-Mould Alu. Extrusion
- 2.5 AF3000H8-Internal W-Corner Alu. Extrusion
- 2.6 AF3000H2 : External Corner Alu. Extrusion

## 3. Suggested Membrane &amp; Tapes :

- Supply By Proclima
- 3.1 Solitex Extasana - Weathertightness Membrane
- 3.2 Tescon Extoseal Sill Tape -150mm
- 3.3 Tescon Extora Fabric Flashing Tape -60mm
- 3.4 Tescon AdhisoWS - Wet Seal Adhesion Tape

## 4. Fixings

- 4.1 SS304 8x20mm CSK ST Screw #2 Sq.Dr
- 4.2 SS304 8x35mm PH ST Screw #2 Sq.Dr
- 4.3 SS304 10g x40 WingNek T138 - T20.Dr

## 5. Aluminium Flashings

- 5.1 AL. 1.6mm Custom Folded

# SPS BUILDING

**ROOFING & BUILDING PRODUCTS**

SPS Roofing and Building Limited  
220B Bush Road, Rosedale, Auckland, New Zealand,  
T : +64 9 415 2669 | www.spsbuilding.co.nz

Sheet Title:

Window Head  
Typical Section Detail  
Vertical Shiplap Cladding

Original In Colour

Sheet Status:

Architectural  
Resource  
For Information & Design

Sheet Number:

IC-V20-005

Revision:

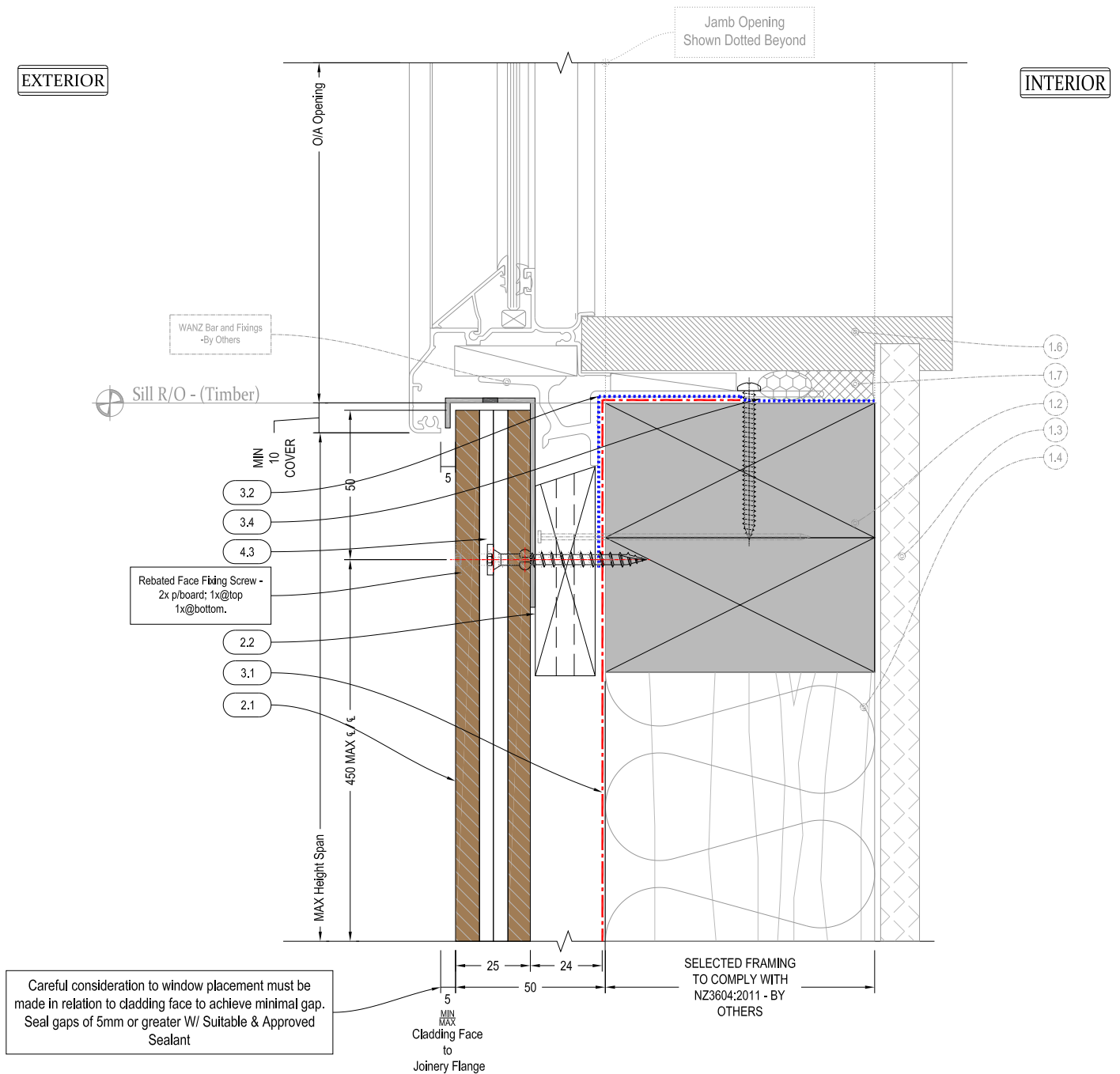
v1.3

Revision Date

Mar. 2020

Scale @ A4:

1:2



## 1. Structure : By Others

- 1.1 Concrete
- 1.2 Timber
- 1.3 Internal Lining
- 1.4 Insulation
- 1.5 Fibre Cement RWU
- 1.6 Window Joinery
- 1.7 Approved Sealant on PEF Rod to suit gap

## 2. Cladding Elements : Supply By SPS

- 2.1 InnoClad Vertical Shiplap Weatherboard Cladding
- 2.2 H3.2 70x20mm Castellated Timber Cavity Battens - Nailed/Screwed @ Manuf. Spec c/c
- 2.3 AF3000H1 : J-Mould Alu, Extrusion
- 2.4 AF4000H9 : Drained J-Mould Alu, Extrusion
- 2.5 AF3000H8-Internal W-Corner Alu, Extrusion
- 2.6 AF3000H2 : External Corner Alu, Extrusion

## 3. Suggested Membrane &amp; Tapes :

- Supply By Proclima
- 3.1 Solitex Extasana - Weathertightness Membrane
- 3.2 Tescon Extoseal Sill Tape -150mm
- 3.3 Tescon Extora Fabric Flashing Tape -60mm
- 3.4 Tescon AdhisoWS - Wet Seal Adhesion Tape

## 4. Fixings

- 4.1 SS304 8x20mm CSK ST Screw #2 Sq.Dr
- 4.2 SS304 8x35mm PH ST Screw #2 Sq.Dr
- 4.3 SS304 10g x40 WingNek Ti38 - T20.Dr

## 5. Aluminium Flashings

- 5.1 AL, 1.6mm Custom Folded

# SPS BUILDING

ROOFING & BUILDING PRODUCTS

SPS Roofing and Building Limited  
220B Bush Road, Rosedale, Auckland, New Zealand,  
T : +64 9 415 2669 | www.spsbuilding.co.nz

Sheet Title:

Window Sill  
Typical Section Detail  
Vertical Shiplap Cladding

Original In Colour

Sheet Status:

Architectural  
Resource  
For Information & Design

Sheet Number:

IC-V20-006

Revision:

v1.3

Revision Date

Mar. 2020

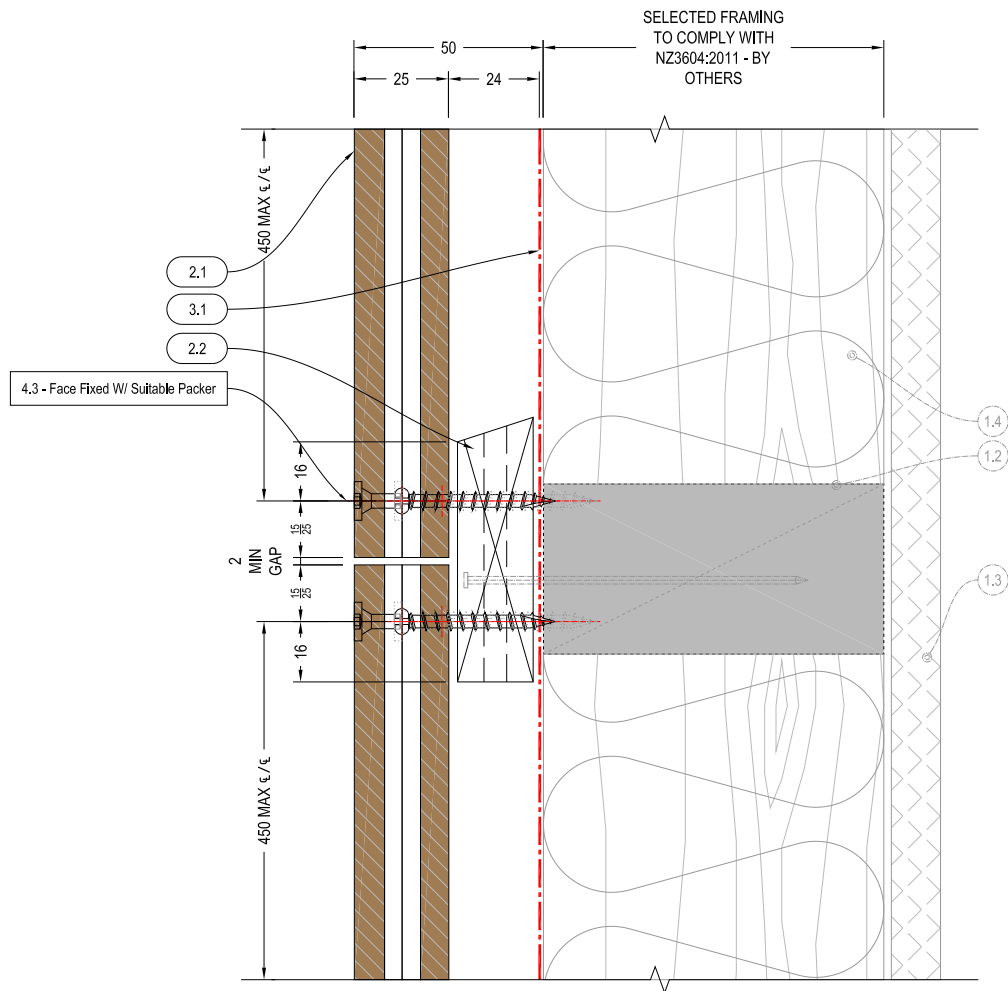
Scale @ A4:

1:2





- 5.1 AL 1.6mm Custom Folded



1. Structure : By Others

- 1.1 Concrete
- 1.2 Timber
- 1.3 Internal Lining
- 1.4 Insulation
- 1.5 Fibre Cement RWU
- 1.6 Window Joinery
- 1.7 Approved Sealant on PEF Rod to suit gap

2. Cladding Elements : Supply By SPS

- 2.1 InnoClad Vertical Shiplap Weatherboard Cladding
- 2.2 H3,2 70x20mm Castellated Timber Cavity Battens - Nailed/Screwed @ Manuf. Spec E / E
- 2.3 AF3000H1 : J-Mould Alu. Extrusion
- 2.4 AF4000H9 : Drained J-Mould Alu. Extrusion
- 2.5 AF3000H8-Internal W-Corner Alu. Extrusion
- 2.6 AF3000H2 : External Corner Alu. Extrusion

3. Suggested Membrane & Tapes :

- Supply By Prodlina
- 3.1 Solitex Extasana - Weathertightness Membrane
- 3.2 Tescon Extoseal Sill Tape -150mm
- 3.3 Tescon Extora Fabric Flashing Tape -60mm
- 3.4 Tescon AdhisoWS - Wet Seal Adhesion Tape

4. Fixings

- 4.1 SS304 8gx20mm CSK ST Screw #2 Sq.Dr
- 4.2 SS304 8gx35mm PH ST Screw #2 Sq.Dr
- 4.3 SS304 10g x40 WingNek Ti38 - T20.Dr

5. Aluminium Flashings

- 5.1 AL. 1.6mm Custom Folded

**SPS BUILDING**

ROOFING & BUILDING PRODUCTS

SPS Roofing and Building Limited  
220B Bush Road, Rosedale, Auckland, New Zealand,  
T : +64 9 415 2669 | www.spsbuilding.co.nz

Sheet Title:

Horizontal Joint  
Typical Section Detail  
Vertical Shiplap Cladding



Sheet Status:

Architectural  
Resource  
For Information & Design

Sheet Number:

IC-V20-008

Revision:

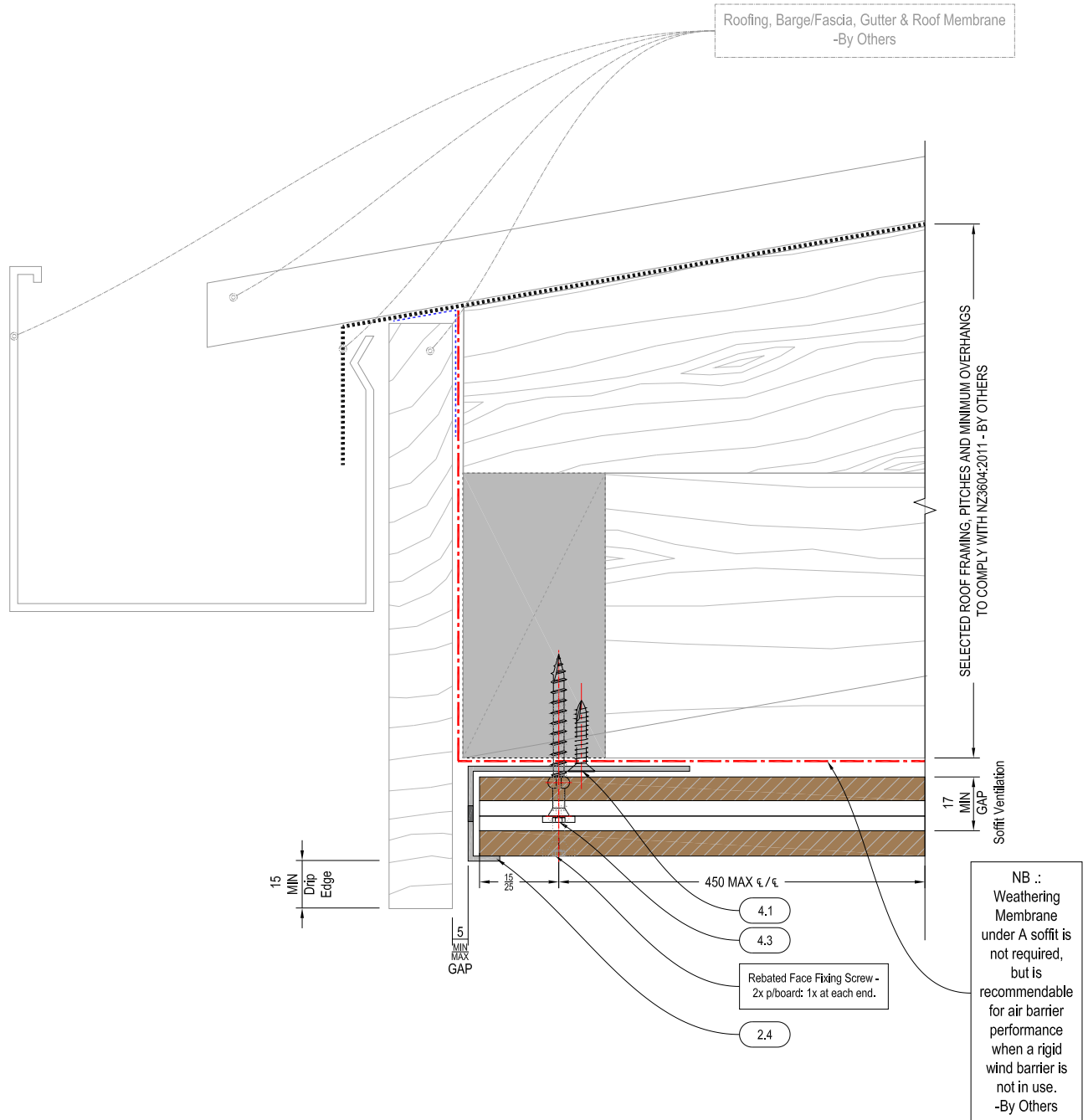
v1.3

Revision Date

Mar. 2020

Scale @ A4:

1:2



## 1. Structure : By Others

- 1.1 Concrete
- 1.2 Timber
- 1.3 Internal Lining
- 1.4 Insulation
- 1.5 Fibre Cement RWU
- 1.6 Window Joinery
- 1.7 Approved Sealant on PEF Rod to suit gap

## 2. Cladding Elements : Supply By SPS

- 2.1 InnoClad Vertical Shiplap Weatherboard Cladding
- 2.2 H3.2 70x20mm Castellated Timber Cavity Battens - Nailed/Screwed @ Manuf. Spec  $\phi$  /  $\epsilon$
- 2.3 AF3000H1 : J-Mould  
Alu. Extrusion
- 2.4 AF4000H9 : Drained J-Mould  
Alu. Extrusion
- 2.5 AF3000H8-Internal W-Corner  
Alu. Extrusion
- 2.6 AF3000H2 : External Corner  
Alu. Extrusion

## 3. Suggested Membrane &amp; Tapes :

- Supply By Proclima
- 3.1 Solitex Extasana -  
Weathertightness Membrane
- 3.2 Tescon Extoseal Sill Tape -150mm
- 3.3 Tescon Extora Fabric Flashing Tape -60mm
- 3.4 Tescon AdhisoWS - Wet Seal Adhesion Tape

## 4. Fixings

- 4.1 SS304 8gx20mm CSK ST Screw #2 Sq.Dr
- 4.2 SS304 8gx35mm PH ST Screw #2 Sq.Dr
- 4.3 SS304 10g x40 WingNek Ti38 - T20.Dr

## 5. Aluminium Flashings

- 5.1 AL. 1.6mm Custom Folded

# SPS BUILDING

**ROOFING & BUILDING PRODUCTS**

SPS Roofing and Building Limited  
220B Bush Road, Rosedale, Auckland, New Zealand,  
T : +64 9 415 2669 | www.spsbuilding.co.nz

Sheet Title:

Fascia To Soffit/Eave  
Typical Section Detail  
Vertical Shiplap Cladding



Sheet Status:

Architectural  
Resource  
For Information & Design

Sheet Number:

IC-V20-009

Revision:

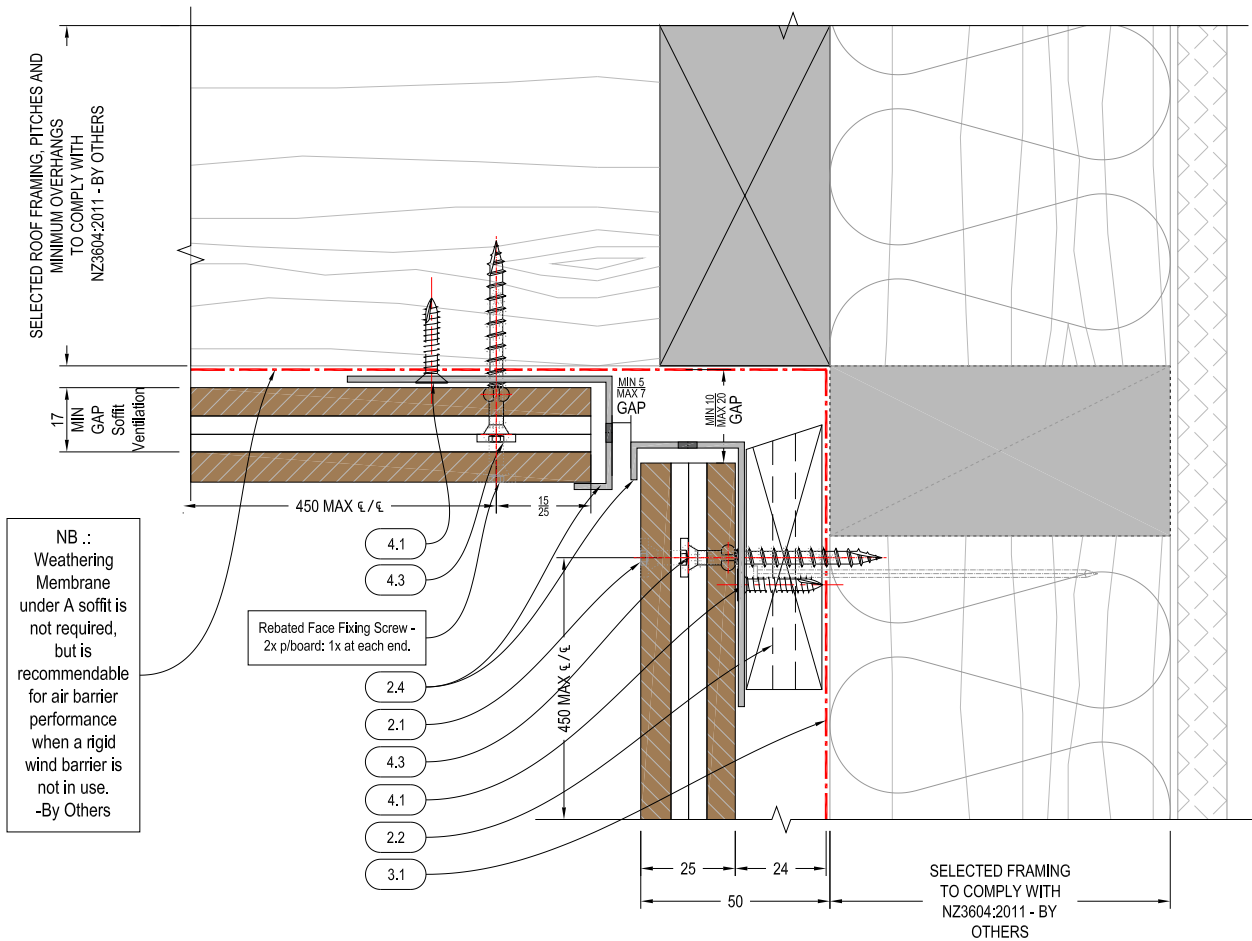
v1.3

Revision Date

Mar. 2020

Scale @ A4:

1:2



1. Structure : By Others

- 1.1 Concrete
- 1.2 Timber
- 1.3 Internal Lining
- 1.4 Insulation
- 1.5 Fibre Cement RWU
- 1.6 Window Joinery
- 1.7 Approved Sealant on PEF Rod to suit gap

2. Cladding Elements : Supply By SPS

- 2.1 InnoClad Vertical Shiplap Weatherboard Cladding
- 2.2 H3.2 70x20mm Castillated Timber Cavity Battens - Nailed/Screwed @ Manuf. Spec. E/ε
- 2.3 AF3000H1 : J-Mould Alu. Extrusion
- 2.4 AF4000H9 : Drained J-Mould Alu. Extrusion
- 2.5 AF3000H8-Internal W-Corner Alu. Extrusion
- 2.6 AF3000H2 : External Corner Alu. Extrusion

3. Suggested Membrane & Tapes :

- Supply By Prodlma
- 3.1 Solitex Extasana - Weatherghtness Membrane
- 3.2 Tescon Extoseal Sill Tape -150mm
- 3.3 Tescon Extora Fabric Flashing Tape -60mm
- 3.4 Tescon AdhisoWS - Wet Seal Adhesion Tape

4. Fixings

- 4.1 SS304 8x20mm CSK ST Screw #2 Sq,Dr
- 4.2 SS304 8x35mm PH ST Screw #2 Sq,Dr
- 4.3 SS304 10g x40 WingNek Ti38 - T20,Dr

5. Aluminium Flashings

- 5.1 AL 1.6mm Custom Folded

**SPS BUILDING**

ROOFING & BUILDING PRODUCTS

SPS Roofing and Building Limited  
220B Bush Road, Rosedale, Auckland, New Zealand,  
T : +64 9 415 2669 | www.spsbuilding.co.nz

Sheet Title:

Soffit/Eave To Wall  
Typical Section Detail  
Vertical Shiplap Cladding



Sheet Status:

Architectural  
Resource  
For Information & Design

Sheet Number:

IC-V20-010

Revision:

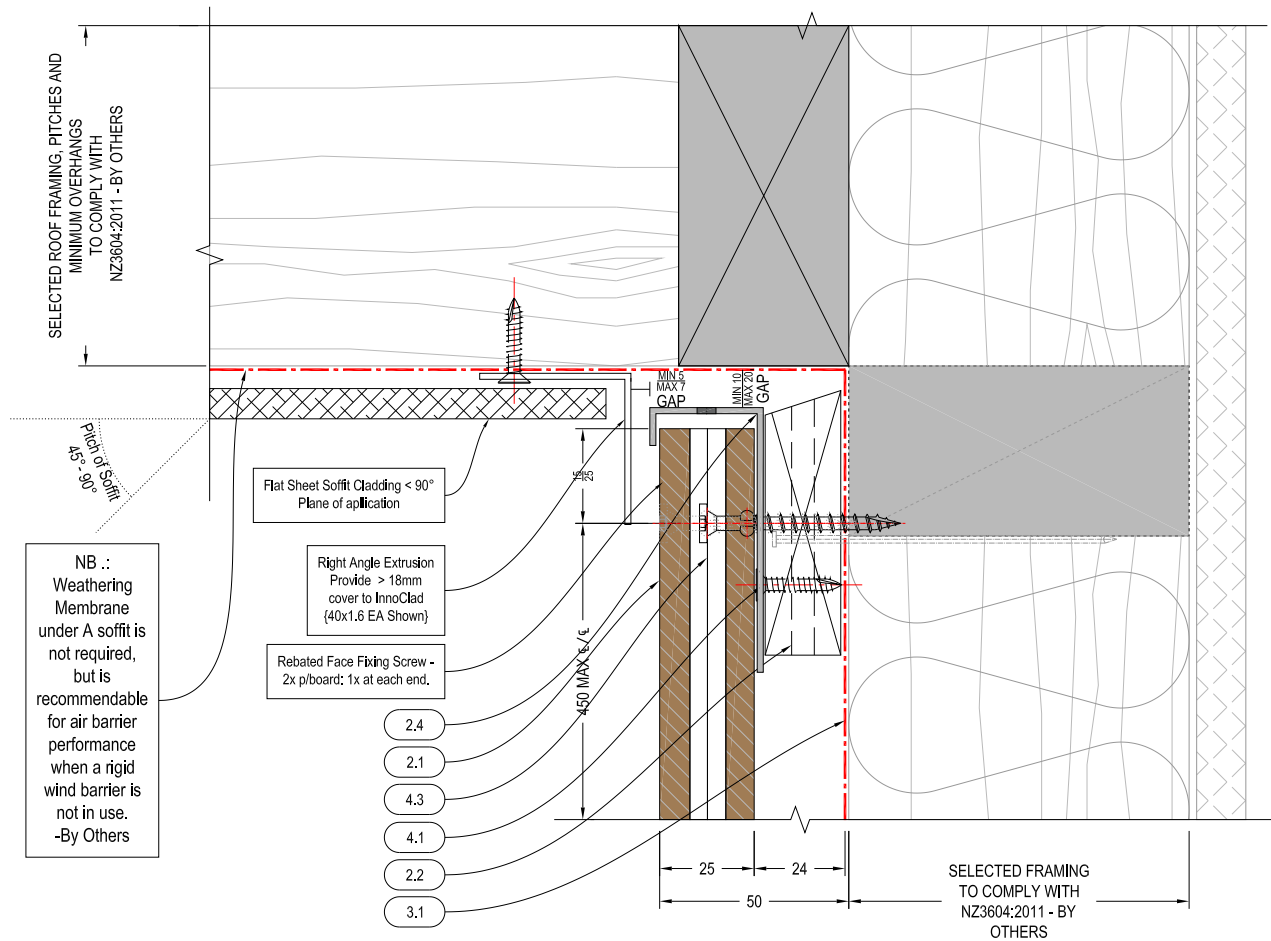
v1.3

Revision Date

Mar. 2020

Scale @ A4:

1:2



## 1. Structure : By Others

- 1.1 Concrete
- 1.2 Timber
- 1.3 Internal Lining
- 1.4 Insulation
- 1.5 Fibre Cement RWU
- 1.6 Window Joinery
- 1.7 Approved Sealant on PEF Rod to suit gap

## 2. Cladding Elements : Supply By SPS

- 2.1 InnoClad Vertical Shiplap Weatherboard Cladding
- 2.2 H3.2 70x20mm Castellated Timber Cavity Battens - Nailed/Screwed @ Manuf. Spec 4/4
- 2.3 AF3000H1 : J-Mould Alu. Extrusion
- 2.4 AF4000H9 : Drained J-Mould Alu. Extrusion
- 2.5 AF3000H8-Internal W-Corner Alu. Extrusion
- 2.6 AF3000H2 : External Corner Alu. Extrusion

## 3. Suggested Membrane &amp; Tapes :

- Supply By Proclima
- 3.1 Solitex Extasana - Weatherightness Membrane
- 3.2 Tescon Extoseal Sill Tape -150mm
- 3.3 Tescon Extora Fabric Flashing Tape -60mm
- 3.4 Tescon AdhisoWS - Wet Seal Adhesion Tape

## 4. Fixings

- 4.1 SS304 8gx20mm CSK ST Screw #2 Sq,Dr
- 4.2 SS304 8gx35mm PH ST Screw #2 Sq,Dr
- 4.3 SS304 10g x40 WingNek Ti38 - T20,Dr

## 5. Aluminium Flashings

- 5.1 AL. 1.6mm Custom Folded

# SPS BUILDING

ROOFING & BUILDING PRODUCTS

SPS Roofing and Building Limited  
220B Bush Road, Rosedale, Auckland, New Zealand,  
T : +64 9 415 2669 | www.spsbuilding.co.nz

Sheet Title:

Flat Sheet Soffit/Eave To Wall <90°  
Typical Section Detail  
Vertical Shiplap Cladding



Sheet Status:

Architectural  
Resource  
For Information & Design

Sheet Number:

IC-V20-010.1

Revision:

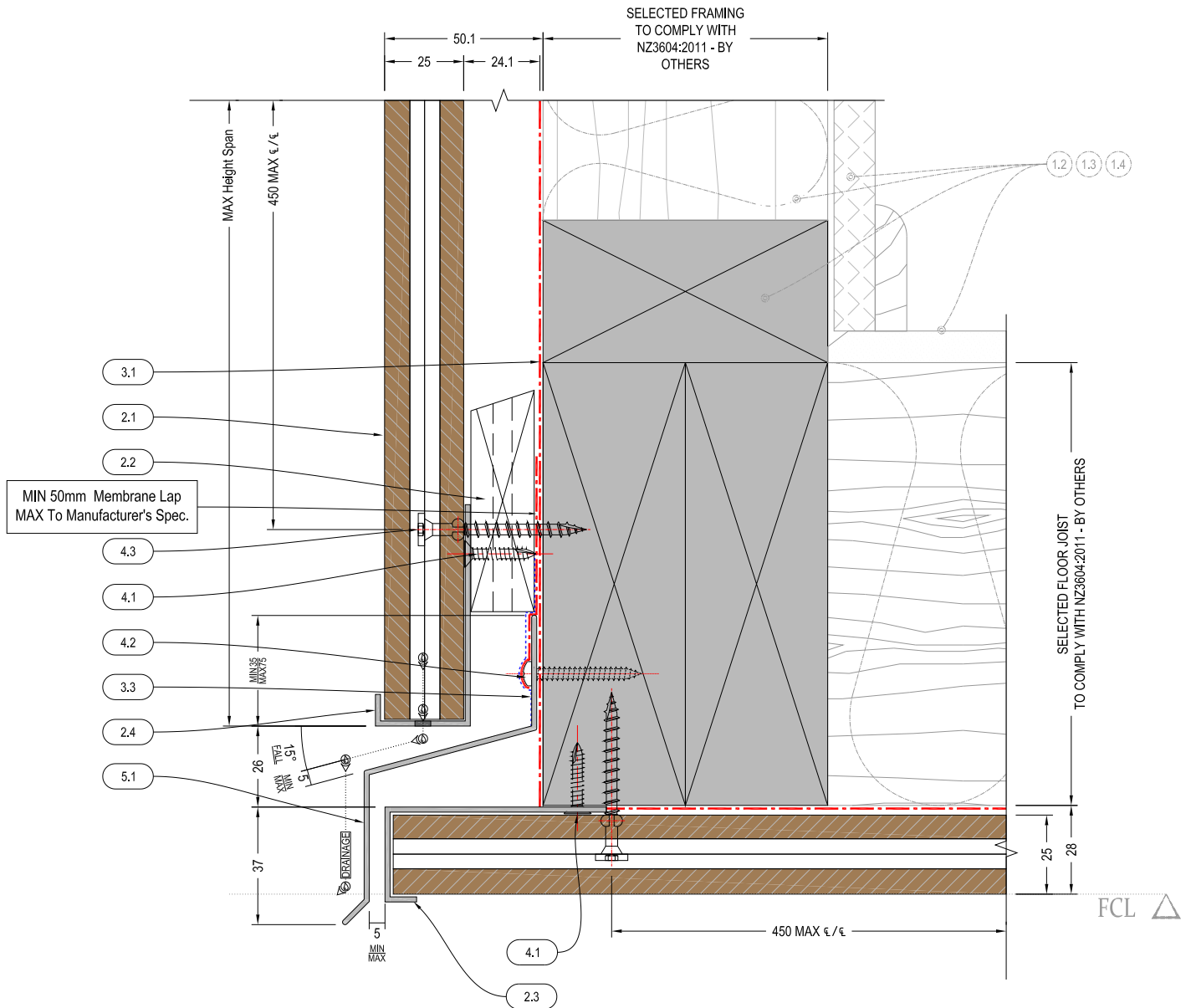
v1.3

Revision Date

Mar. 2020

Scale @ A4:

1:2



## 1. Structure : By Others

- 1.1 Concrete
- 1.2 Timber
- 1.3 Internal Lining
- 1.4 Insulation
- 1.5 Fibre Cement RWU
- 1.6 Window Joinery
- 1.7 Approved Sealant on PEF Rod to suit gap

## 2. Cladding Elements : Supply By SPS

- 2.1 InnoClad Vertical Shiplap Weatherboard Cladding
- 2.2 H3.2 70x20mm Castellated Timber Cavity Battens - Nailed/Screwed @ Manuf. Spec.  $\epsilon/\epsilon$
- 2.3 AF3000H1 : J-Mould  
Alu. Extrusion
- 2.4 AF4000H9 : Drained J-Mould  
Alu. Extrusion
- 2.5 AF3000H8-Internal W-Corner  
Alu. Extrusion
- 2.6 AF3000H2 : External Corner  
Alu. Extrusion

## 3. Suggested Membrane &amp; Tapes :

- Supply By Prodlina
- 3.1 Solitex Extasana -  
Weatherightness Membrane
- 3.2 Tescon Extoseal Sill Tape -150mm
- 3.3 Tescon Extora Fabric Flashing Tape -60mm
- 3.4 Tescon AdhisoWS - Wet Seal Adhesion Tape

## 4. Fixings

- 4.1 SS304 8gx20mm CSK ST Screw #2 Sq,Dr
- 4.2 SS304 8gx35mm PH ST Screw #2 Sq,Dr
- 4.3 SS304 10g x40 WingNek Ti38 - T20,Dr

## 5. Aluminium Flashings

- 5.1 AL 1.6mm Custom Folded

# SPS BUILDING

**ROOFING & BUILDING PRODUCTS**

SPS Roofing and Building Limited  
220B Bush Road, Rosedale, Auckland, New Zealand,  
T : +64 9 415 2669 | www.spsbuilding.co.nz

Sheet Title:

Wall To Soffit  
Typical Section Detail  
Vertical Shiplap Cladding

Sheet Status:

Architectural  
Resource  
For Information & Design

Sheet Number:

IC-V20-011

Revision:

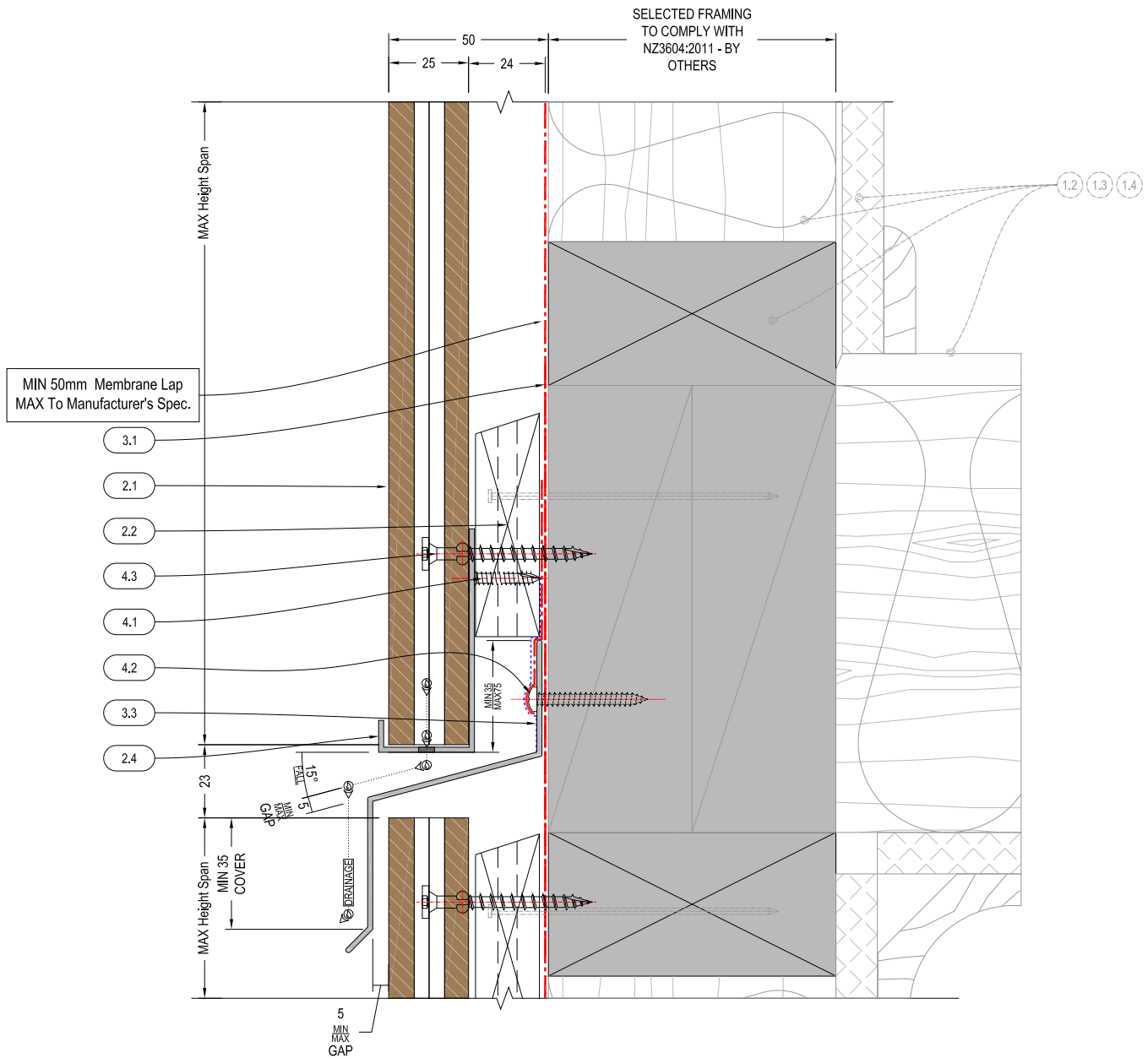
v1.3

Revision Date

Mar. 2020

Scale @ A4:

1:2



## 1. Structure : By Others

- 1.1 Concrete
- 1.2 Timber
- 1.3 Internal Lining
- 1.4 Insulation
- 1.5 Fibre Cement RWU
- 1.6 Window Joinery
- 1.7 Approved Sealant on PEF Rod to suit gap

## 2. Cladding Elements : Supply By SPS

- 2.1 InnoClad Vertical Shiplap Weatherboard Cladding
- 2.2 H3.2 70x20mm Castellated Timber Cavity Battens - Nailed/Screwed @ Manuf. Spec. 1/2"
- 2.3 AF3000H1 : J-Mould  
Alu. Extrusion
- 2.4 AF4000H9 : Drained J-Mould  
Alu. Extrusion
- 2.5 AF3000H8-Internal W-Corner  
Alu. Extrusion
- 2.6 AF3000H2 : External Corner  
Alu. Extrusion

## 3. Suggested Membrane &amp; Tapes :

- Supply By Proclima
- 3.1 Solitex Extasana -  
Weatherightness Membrane
- 3.2 Tescon Extoseal Sill Tape -150mm
- 3.3 Tescon Extora Fabric Flashing Tape -60mm
- 3.4 Tescon AdhisoWS - Wet Seal Adhesion Tape

## 4. Fixings

- 4.1 SS304 8gx20mm CSK ST Screw #2 Sq.Dr
- 4.2 SS304 8gx35mm PH ST Screw #2 Sq.Dr
- 4.3 SS304 10g x40 WingNek Ti38 - T20,Dr

## 5. Aluminium Flashings

- 5.1 AL. 1.6mm Custom Folded

# SPS BUILDING

**ROOFING & BUILDING PRODUCTS**

SPS Roofing and Building Limited  
220B Bush Road, Rosedale, Auckland, New Zealand,  
T : +64 9 415 2669 | www.spsbuilding.co.nz

Sheet Title:

Inter-Storey Junction  
Typical Section Detail  
Vertical Shiplap Cladding



Sheet Status:

Architectural  
Resource  
For Information & Design

Sheet Number:

IC-V20-012

Revision:

v1.3

Revision Date

Mar. 2020

Scale @ A4:

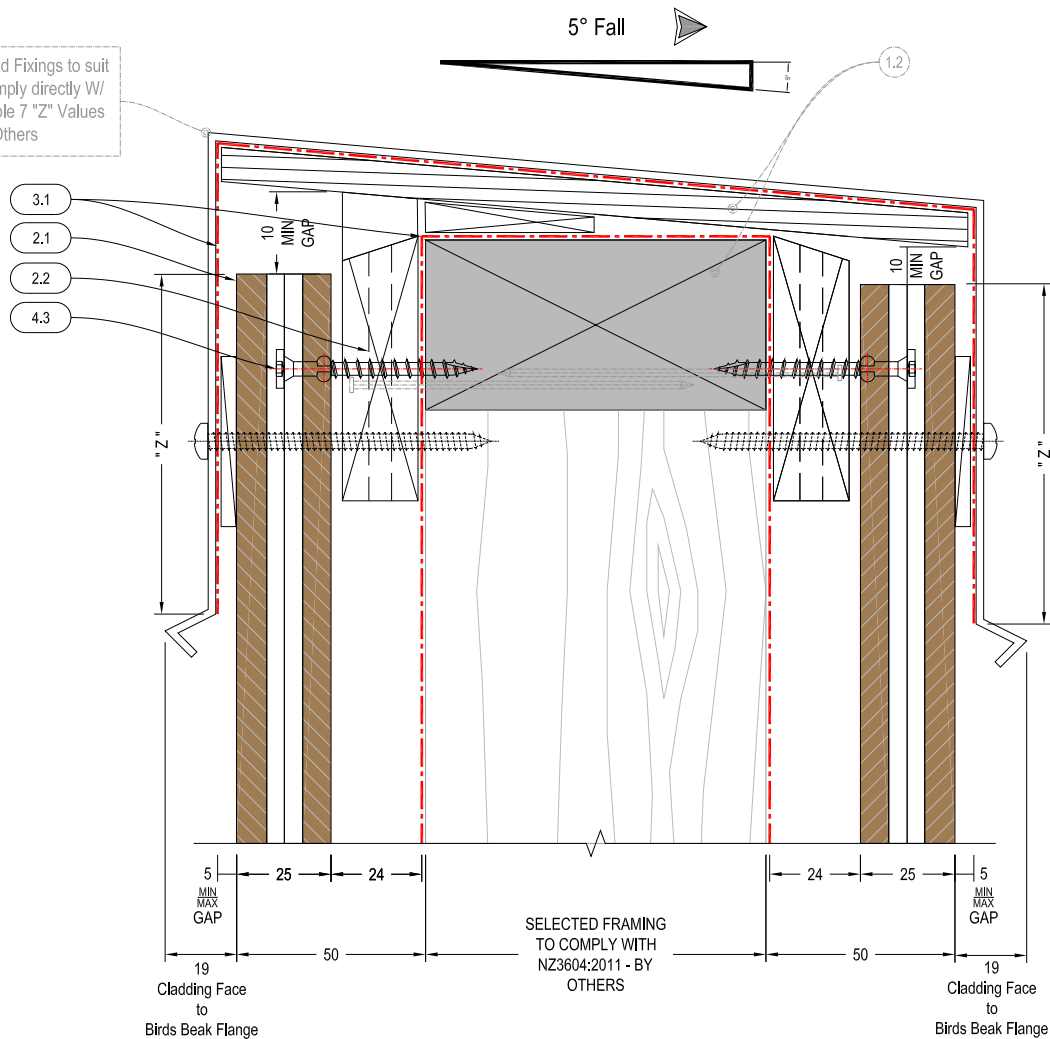
1:2

NZBC - Acceptable Solution E2/AS1:(2011)

Table 7 : Z Values for Parapet Capping Cover Selection

- Situation 1: Low, Medium, High wind zones, where roof pitch  $\geq 10^\circ$  (X or Z values)
- Situation 2: All roof pitches in Very High wind zones, Low, Medium and High wind zones where roof pitch  $\leq 10^\circ$ . (X or Z values)
- Situation 3: For all roof pitches in Extra High wind zone.

Parapet Cap and Fixings to suit design and comply directly W/ NZBC- E2: Table 7 "Z" Values -By Others



## 1. Structure : By Others

- 1.1 Concrete
- 1.2 Timber
- 1.3 Internal Lining
- 1.4 Insulation
- 1.5 Fibre Cement RWU
- 1.6 Window Joinery
- 1.7 Approved Sealant on PEF Rod to suit gap

## 2. Cladding Elements : Supply By SPS

- 2.1 InnoClad Vertical Shiplap Weatherboard Cladding
- 2.2 H3.2 70x20mm Castellated Timber Cavity Battens - Nailed/Screwed @ Manuf. Spec. 1/1
- 2.3 AF3000H1 : J-Mould Alu, Extrusion
- 2.4 AF4000H9 : Drained J-Mould Alu, Extrusion
- 2.5 AF3000H8-Internal W-Corner Alu, Extrusion
- 2.6 AF3000H2 : External Corner Alu, Extrusion

## 3. Suggested Membrane &amp; Tapes :

- Supply By Prodlma
- 3.1 Solitex Extasana - Weatherightness Membrane
- 3.2 Tescon Extoseal Sill Tape -150mm
- 3.3 Tescon Extora Fabric Flashing Tape -60mm
- 3.4 Tescon AdhisoWS - Wet Seal Adhesion Tape

## 4. Fixings

- 4.1 SS304 8gx20mm CSK ST Screw #2 Sq,Dr
- 4.2 SS304 8gx35mm PH ST Screw #2 Sq,Dr
- 4.3 SS304 10g x40 WingNek T138 - T20,Dr

## 5. Aluminium Flashings

- 5.1 AL. 1.6mm Custom Folded

# SPS BUILDING

ROOFING &amp; BUILDING PRODUCTS

SPS Roofing and Building Limited  
220B Bush Road, Rosedale, Auckland, New Zealand,  
T : +64 9 415 2669 | www.spsbuilding.co.nz

Sheet Title:

Parapet Cap  
Typical Section Detail  
Vertical Shiplap Cladding

Original In Colour

Sheet Status:

Architectural  
Resource  
For Information & Design

Sheet Number:

IC-V20-013

Revision:

v1.3

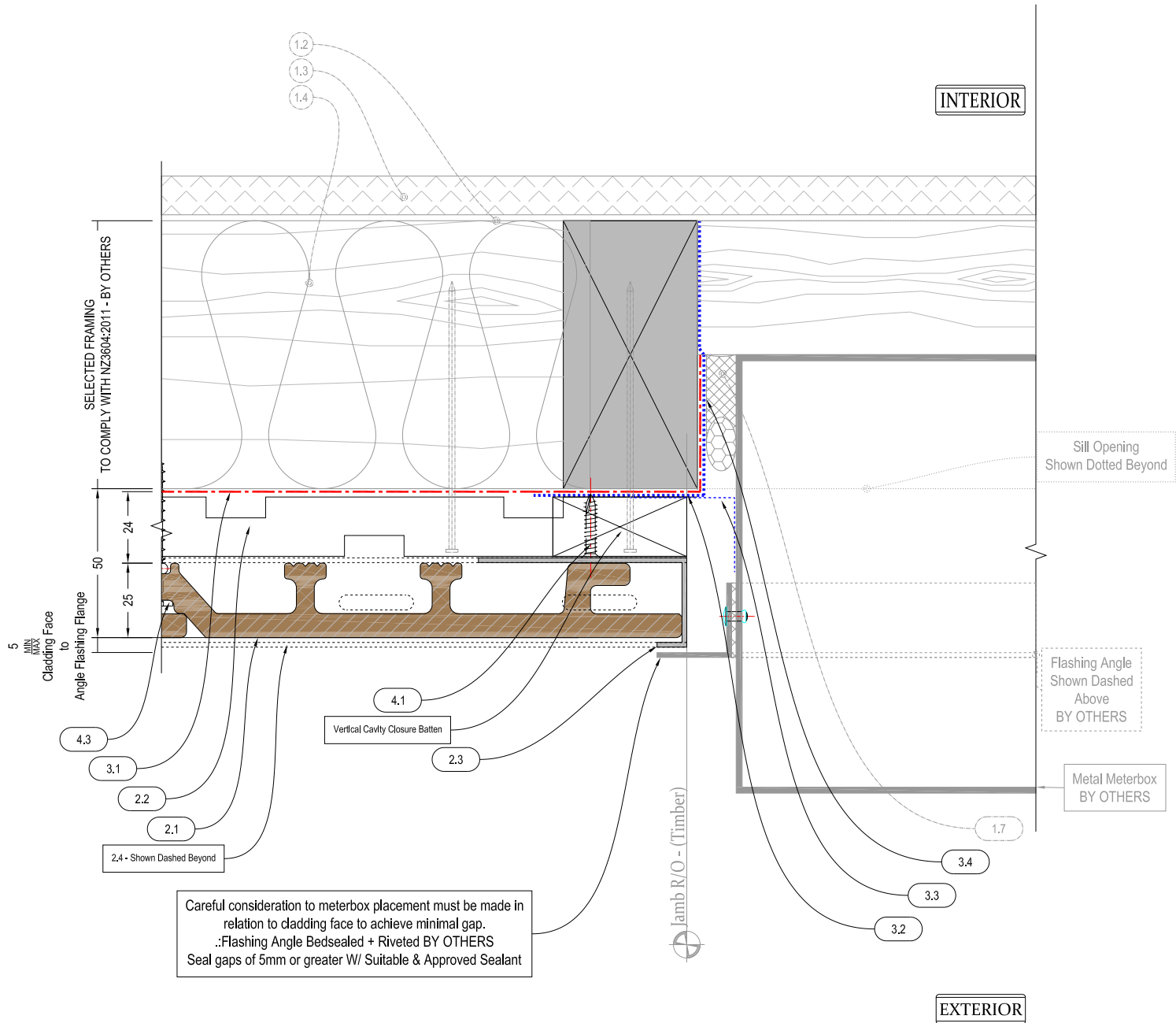
Revision Date

Mar. 2020

Scale @ A4:

1:2





## 1. Structure : By Others

- 1.1 Concrete
- 1.2 Timber
- 1.3 Internal Lining
- 1.4 Insulation
- 1.5 Fibre Cement RWU
- 1.6 Window Joinery
- 1.7 Approved Sealant on PEF Rod to suit gap

## 2. Cladding Elements : Supply By SPS

- 2.1 InnoClad Vertical Shiplap Weatherboard Cladding
- 2.2 H3.2 70x20mm Castellated Timber Cavity Battens - Nailed/Screwed @ Manut. Spec 1/4"
- 2.3 AF3000H1 : J-Mould  
Alu. Extrusion
- 2.4 AF4000H9 : Drained J-Mould  
Alu. Extrusion
- 2.5 AF3000H8-Internal W-Corner  
Alu. Extrusion
- 2.6 AF3000H2 : External Corner  
Alu. Extrusion

## 3. Suggested Membrane &amp; Tapes :

- Supply By Proclima
- 3.1 Solitex Extasana -  
Weatherightness Membrane
- 3.2 Tescon Extoseal Sill Tape -150mm
- 3.3 Tescon Extora Fabric Flashing Tape -60mm
- 3.4 Tescon AdhisoWS - Wet Seal Adhesion Tape

## 4. Fixings

- 4.1 SS304 8gx20mm CSK ST Screw #2 Sq,Dr
- 4.2 SS304 8gx35mm PH ST Screw #2 Sq,Dr
- 4.3 SS304 10g x40 WingNek T138 - T20,Dr

## 5. Aluminium Flashings

- 5.1 AL. 1.6mm Custom Folded

# SPS BUILDING

**ROOFING & BUILDING PRODUCTS**

SPS Roofing and Building Limited  
220B Bush Road, Rosedale, Auckland, New Zealand,  
T : +64 9 415 2669 | www.spsbuilding.co.nz

Sheet Title:

Meterbox Jamb  
Typical Section Detail  
Vertical Shiplap Cladding

Sheet Status:

Architectural  
Resource  
For Information & Design

Sheet Number:

IC-V20-014

Revision:

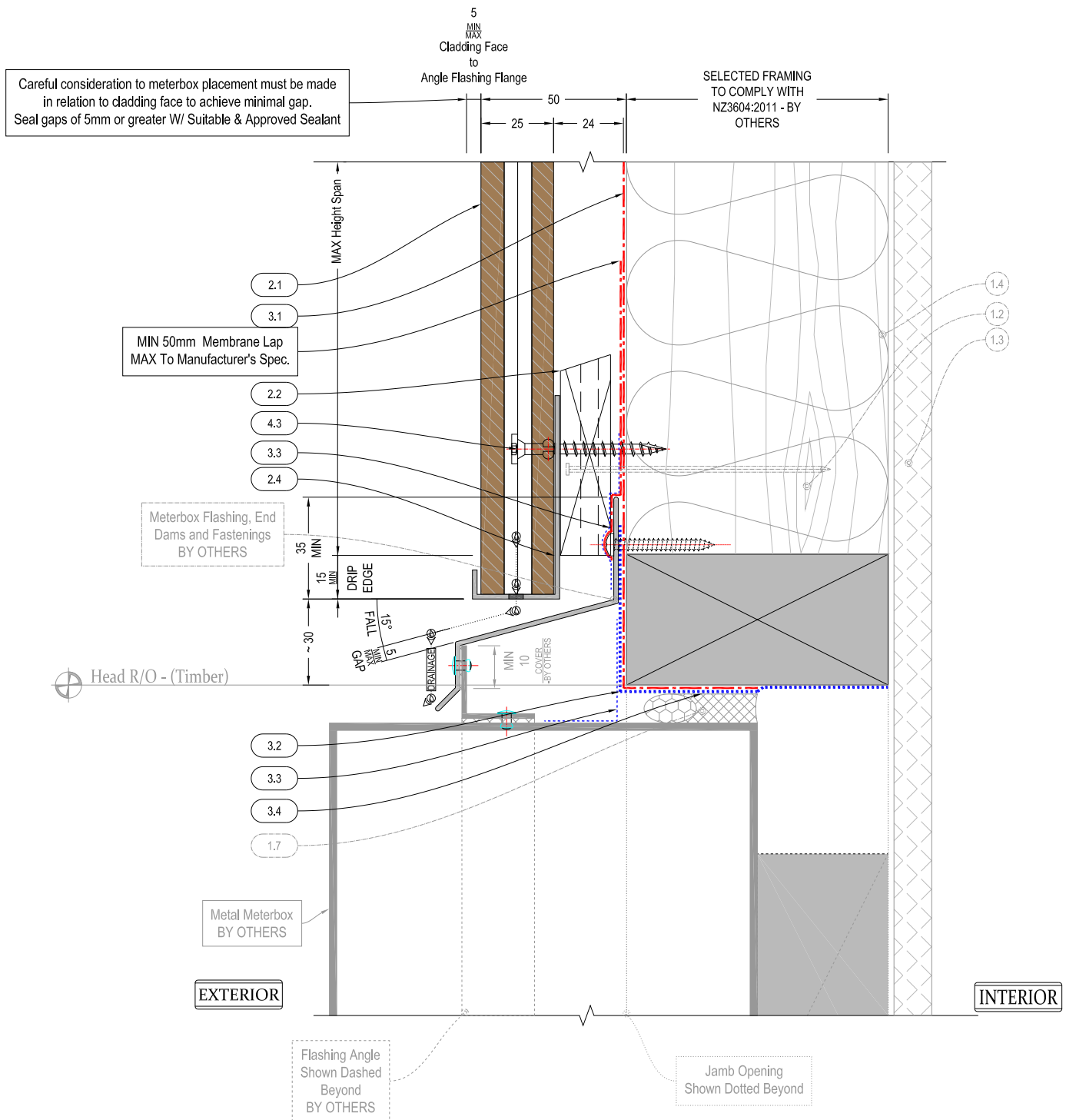
v1.3

Revision Date

Mar. 2020

Scale @ A4:

1:2



## 1. Structure : By Others

- 1.1 Concrete
- 1.2 Timber
- 1.3 Internal Lining
- 1.4 Insulation
- 1.5 Fibre Cement RWU
- 1.6 Window Joinery
- 1.7 Approved Sealant on PEF Rod to suit gap

## 2. Cladding Elements : Supply By SPS

- 2.1 InnoClad Vertical Shiplap Weatherboard Cladding
- 2.2 H3.2 70x20mm Castellated Timber Cavity Battens - Nailed/Screwed @ Manuf. Spec. 1/4"
- 2.3 AF3000H1 : J-Mould  
Alu, Extrusion
- 2.4 AF4000H9 : Drained J-Mould  
Alu, Extrusion
- 2.5 AF3000H8-Internal W-Corner  
Alu, Extrusion
- 2.6 AF3000H2 : External Corner  
Alu, Extrusion

## 3. Suggested Membrane &amp; Tapes :

- Supply By Prodlima
- 3.1 Solitex Extasana -  
Weatherightness Membrane
- 3.2 Tescon Extoseal Sill Tape -150mm
- 3.3 Tescon Extora Fabric Flashing Tape -60mm
- 3.4 Tescon AdhisoWS - Wet Seal Adhesion Tape

## 4. Fixings

- 4.1 SS304 8x20mm CSK ST Screw #2 Sq,Dr
- 4.2 SS304 8x35mm PH ST Screw #2 Sq,Dr
- 4.3 SS304 10g x40 WingNek Ti38 - T20,Dr

## 5. Aluminium Flashings

- 5.1 AL 1.6mm Custom Folded

# SPS BUILDING

**ROOFING & BUILDING PRODUCTS**

SPS Roofing and Building Limited  
220B Bush Road, Rosedale, Auckland, New Zealand,  
T : +64 9 415 2669 | www.spsbuilding.co.nz

Sheet Title:

Meterbox Head  
Typical Section Detail  
Vertical Shiplap Cladding

Sheet Status:

Architectural  
Resource  
For Information & Design

Sheet Number:

IC-V20-015

Revision:

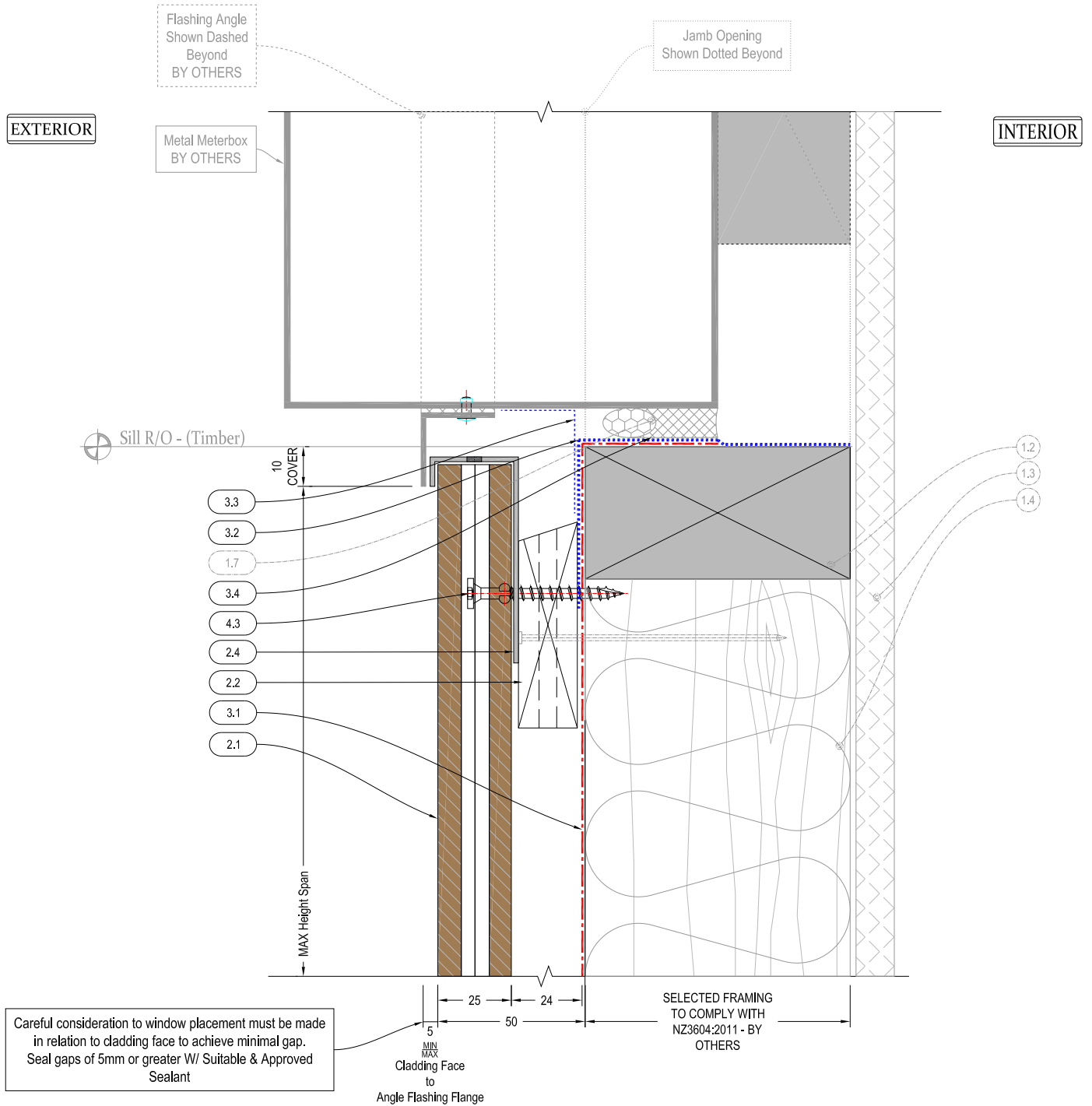
v1.3

Revision Date

Mar. 2020

Scale @ A4:

1:2



## 1. Structure : By Others

- 1.1 Concrete
- 1.2 Timber
- 1.3 Internal Lining
- 1.4 Insulation
- 1.5 Fibre Cement RWU
- 1.6 Window Joinery
- 1.7 Approved Sealant on PEF Rod to suit gap

## 2. Cladding Elements : Supply By SPS

- 2.1 InnoClad Vertical Shiplap Weatherboard Cladding
- 2.2 H3.2 70x20mm Castellated Timber Cavity Battens - Nailed/Screwed @ Manut. Spec 1/4"
- 2.3 AF3000H1 : J-Mould Alu. Extrusion
- 2.4 AF4000H9 : Drained J-Mould Alu. Extrusion
- 2.5 AF3000H8-Internal W-Corner Alu. Extrusion
- 2.6 AF3000H2 : External Corner Alu. Extrusion

## 3. Suggested Membrane &amp; Tapes :

- Supply By Proclima
- 3.1 Solitex Extasana - Weatherightness Membrane
- 3.2 Tescon Extoseal Sill Tape -150mm
- 3.3 Tescon Extora Fabric Flashing Tape -60mm
- 3.4 Tescon AdhisoWS - Wet Seal Adhesion Tape

## 4. Fixings

- 4.1 SS304 8gx20mm CSK ST Screw #2 Sq,Dr
- 4.2 SS304 8gx35mm PH ST Screw #2 Sq,Dr
- 4.3 SS304 10g x40 WingNek T138 - T20,Dr

## 5. Aluminium Flashings

- 5.1 AL. 1.6mm Custom Folded

**SPS BUILDING**

ROOFING & BUILDING PRODUCTS

SPS Roofing and Building Limited  
220B Bush Road, Rosedale, Auckland, New Zealand,  
T : +64 9 415 2669 | www.spsbuilding.co.nz

Sheet Title:

Meterbox Sill  
Typical Section Detail  
Vertical Shiplap Cladding



Sheet Status:

Architectural  
Resource  
For Information & Design

Sheet Number:

IC-V20-016

Revision:

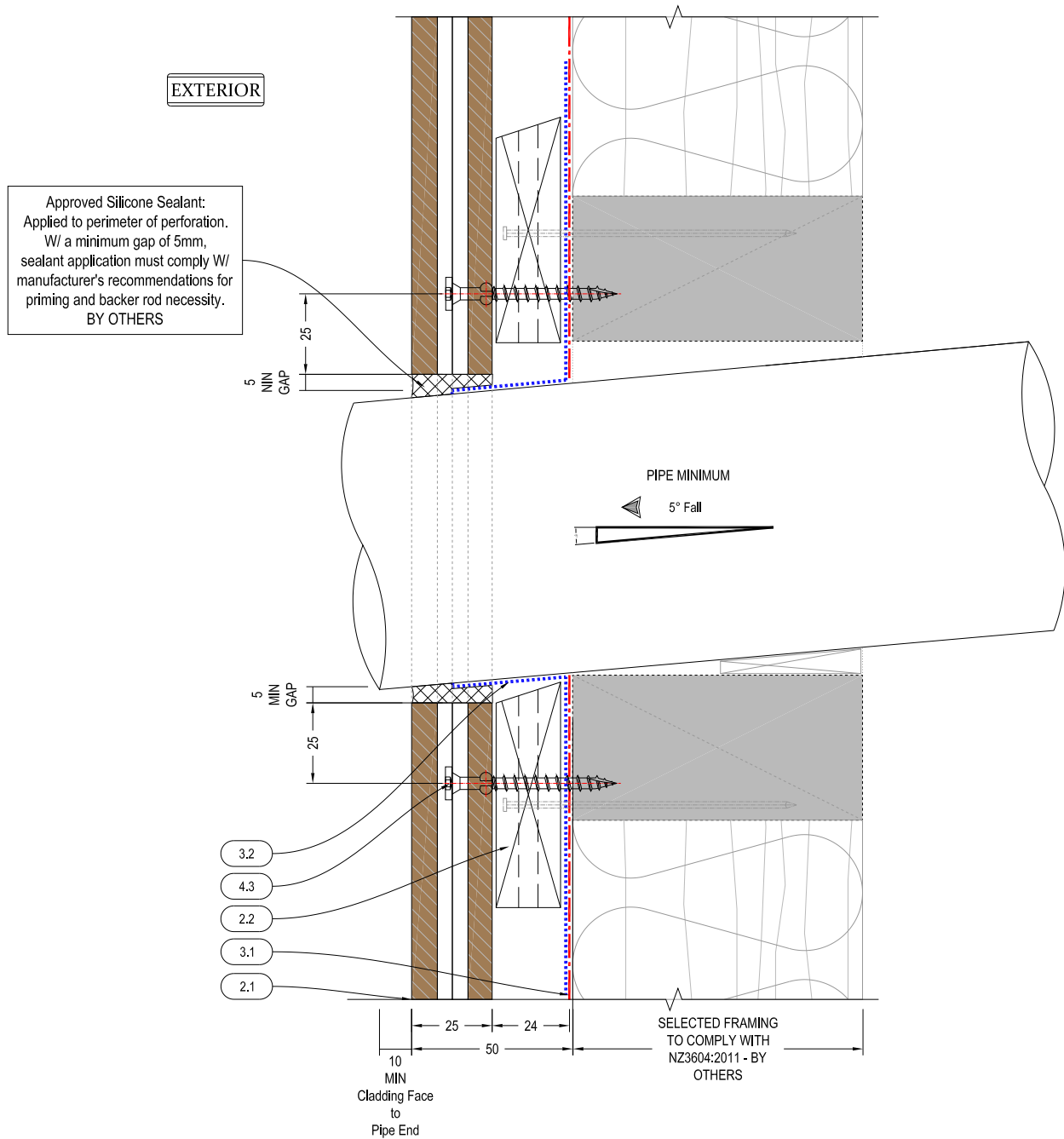
v1.3

Revision Date

Mar. 2020

Scale @ A4:

1:2



## 1. Structure : By Others

- 1.1 Concrete
- 1.2 Timber
- 1.3 Internal Lining
- 1.4 Insulation
- 1.5 Fibre Cement RWU
- 1.6 Window Joinery
- 1.7 Approved Sealant on PEF Rod to suit gap

## 2. Cladding Elements : Supply By SPS

- 2.1 InnoClad Vertical Shiplap Weatherboard Cladding
- 2.2 H3.2 70x20mm Castellated Timber Cavity Battens - Nailed/Screwed @ Manuf. Spec c./s
- 2.3 AF3000H1 : J-Mould  
Alu. Extrusion
- 2.4 AF4000H9 : Drained J-Mould  
Alu. Extrusion
- 2.5 AF3000H8-Internal W-Corner  
Alu. Extrusion
- 2.6 AF3000H2 : External Corner  
Alu. Extrusion

## 3. Suggested Membrane &amp; Tapes :

- Supply By Prodlma
- 3.1 Solitex Extasana -  
Weatherightness Membrane
- 3.2 Tescon Extoseal Sill Tape -150mm
- 3.3 Tescon Extora Fabric Flashing Tape -60mm
- 3.4 Tescon AdhisoWS - Wet Seal Adhesion Tape

## 4. Fixings

- 4.1 SS304 8gx20mm CSK ST Screw #2 Sq.Dr
- 4.2 SS304 8gx35mm PH ST Screw #2 Sq.Dr
- 4.3 SS304 10g x40 WingNek Ti38 - T20,Dr

## 5. Aluminium Flashings

- 5.1 AL. 1.6mm Custom Folded

**SPS BUILDING**

ROOFING & BUILDING PRODUCTS

SPS Roofing and Building Limited  
220B Bush Road, Rosedale, Auckland, New Zealand,  
T : +64 9 415 2669 | www.spsbuilding.co.nz

Sheet Title:

Pipe Penetration (Circular)  
Typical Section Detail  
Vertical Shiplap Cladding

Original In Colour

Sheet Status:

Architectural  
Resource  
For Information & Design

Sheet Number:

IC-V20-017

Revision:

v1.3

Revision Date

Mar. 2020

Scale @ A4:

1:2