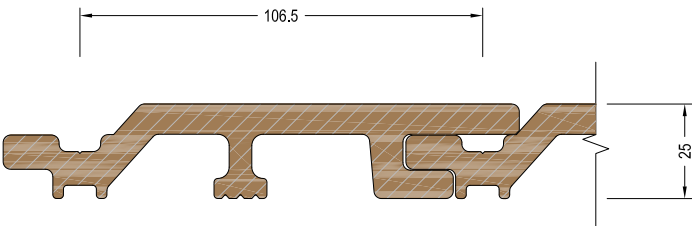
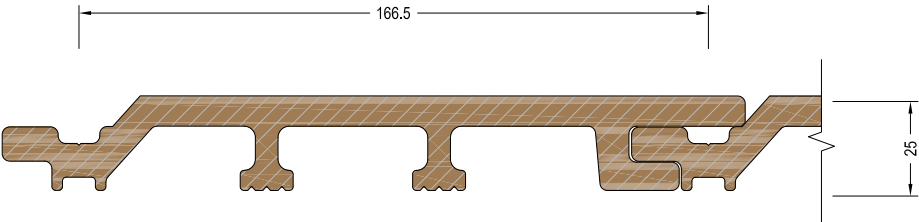


2.1

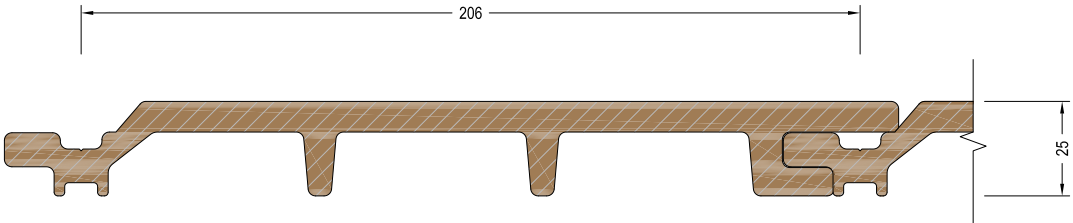
WC13625



WC20025



WC24025



1. Structure : By Others

- 1.1 Concrete
- 1.2 Timber
- 1.3 Internal Lining
- 1.4 Insulation
- 1.5 Fibre Cement RWU
- 1.6 Window Joinery
- 1.7 Approved Sealant on PEF Rod to suit gap

2. Cladding Elements : Supply By SPS

- 2.1 InnoClad Horizontal Shiplap Weatherboard Cladding
- 2.2 H3.2 45x20mm Vertical Timber Cavity Battens - Nailed/Screwed @ Manuf. Spec ϵ/ϵ
- 2.3 AF3000H1 : J-Mould
- 2.4 AF4000H9 : Drained J-Mould

2.5 AF3000H8-Internal W-Corner

- Alu, Extrusion
- 2.6 AF3000H2 : External Corner
- Alu, Extrusion
- 2.7 AF#####- 2pc J-Mould
- Alu, Extrusion
- 2.8 AF#####- Inter-storey Flashing
- Alu, Extrusion
- 2.9 GA-HSL-V01 - EPDM Joint Closer Gasket

3. Suggested Membrane & Tapes :

- Supply By Proclima
- 3.1 Solitex Extasana - Weatherlightness Membrane
- 3.2 Tescon Extoseal Sill Tape -150mm
- 3.3 Tescon Extora Fabric Flashing Tape -60mm
- 3.4 Tescon AdhisoWS - Wet Seal Adhesion Tape

4. Fixings

- 4.1 SS304 8gx20mm CSK ST Screw #2 Sq.Dr
- 4.2 SS304 8gx35mm PH ST Screw #2 Sq.Dr
- 4.3 SS304 10g x40 WingNek T138 - T20.Dr

5. Flashings

- 5.1 AL, 1.6mm/Custom Folded

SPS BUILDING

ROOFING & BUILDING PRODUCTS

SPS Roofing and Building Limited
220B Bush Road, Rosedale, Auckland, New Zealand,
T : +64 9 415 2669 | www.spsbuilding.co.nz

Sheet Title:

Cladding Schedule
Typical System Schedule
Horizontal Shiplap Cladding



Sheet Status:

Architectural
Resource
For Information & Design

Sheet Number:

IC-H20-A01

Revision:

v1.2

Revision Date

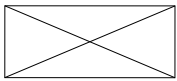
Dec. 2019

Scale @ A4:

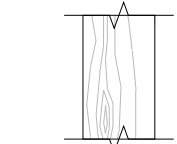
1:2

2.2

20x45 Vertical H3.2 Timber Batten (Plan)

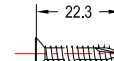


Indicative Batten Fixing



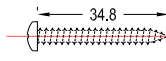
20x45 Vertical H3.2 Timber Batten (Section)

4.1



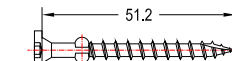
SS304 8gx20mm CSK ST Screw #2 Sq.Dr

4.2



SS304 8gx35mm PH ST Screw #2 Sq.Dr

4.3


SS304 10g x40 WingNek Ti38 - T20.Dr
T17-Tip Self-Clearing Proprietary Screw

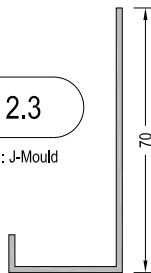
2.9



2.9 GA-HSL-V01 - EPDM Joint Closer Gasket

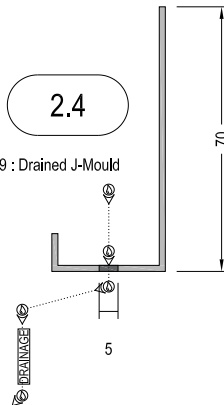
2.3

AF3000H1 : J-Mould



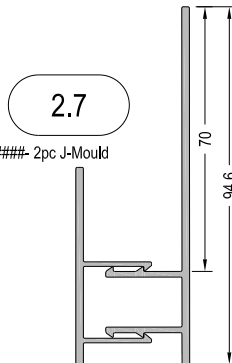
2.4

AF4000H9 : Drained J-Mould



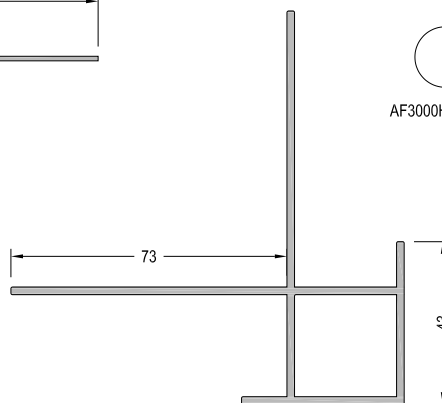
2.7

AF#####- 2pc J-Mould



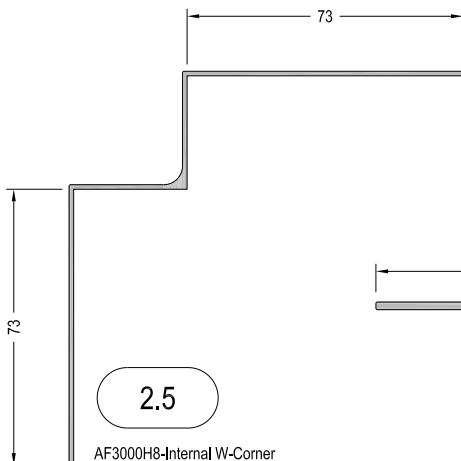
2.6

AF3000H2- External Corner



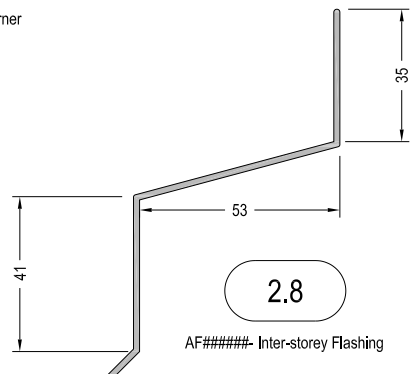
2.5

AF3000H8-Internal W-Corner



2.8

AF#####- Inter-storey Flashing



1. Structure : By Others

- 1.1 Concrete
- 1.2 Timber
- 1.3 Internal Lining
- 1.4 Insulation
- 1.5 Fibre Cement RWU
- 1.6 Window Joinery
- 1.7 Approved Sealant on PEF Rod to suit gap

2. Cladding Elements : Supply By SPS

- 2.1 InnoClad Horizontal Shiplap Weatherboard Cladding
- 2.2 H3.2 45x20mm Vertical Timber Cavity Battens - Nailed/Screwed @ Manuf. Spec $\frac{1}{4}$ / $\frac{1}{4}$
- 2.3 AF3000H1 : J-Mould
- 2.4 AF4000H9 : Drained J-Mould
- 2.5 AF3000H8-Internal W-Corner
- 2.6 AF3000H2 : External Corner
- 2.7 AF#####- 2pc J-Mould
- 2.8 AF#####- Inter-storey Flashing
- 2.9 GA-HSL-V01 - EPDM Joint Closer Gasket

3. Suggested Membrane & Tapes :

- 3.1 Solitex Extasana - Weatherlightness Membrane
- 3.2 Tescon Extoseal Sill Tape -150mm
- 3.3 Tescon Extora Fabric Flashing Tape -60mm
- 3.4 Tescon AdhisoWS - Wet Seal Adhesion Tape

4. Fixings

- 4.1 SS304 8gx20mm CSK ST Screw #2 Sq.Dr
- 4.2 SS304 8gx35mm PH ST Screw #2 Sq.Dr
- 4.3 SS304 10g x40 WingNek Ti38 - T20.Dr

5. Flashings

- 5.1 AL, 1.6mm Custom Folded

SPS BUILDING
ROOFING & BUILDING PRODUCTS

SPS Roofing and Building Limited
220B Bush Road, Rosedale, Auckland, New Zealand,
T : +64 9 415 2669 | www.spsbuilding.co.nz

Sheet Title:

Accessory Schedule
Typical System Schedule
Horizontal Shiplap Cladding



Sheet Status:

Architectural
Resource
For Information & Design

Sheet Number:

IC-H20-A02

Revision:

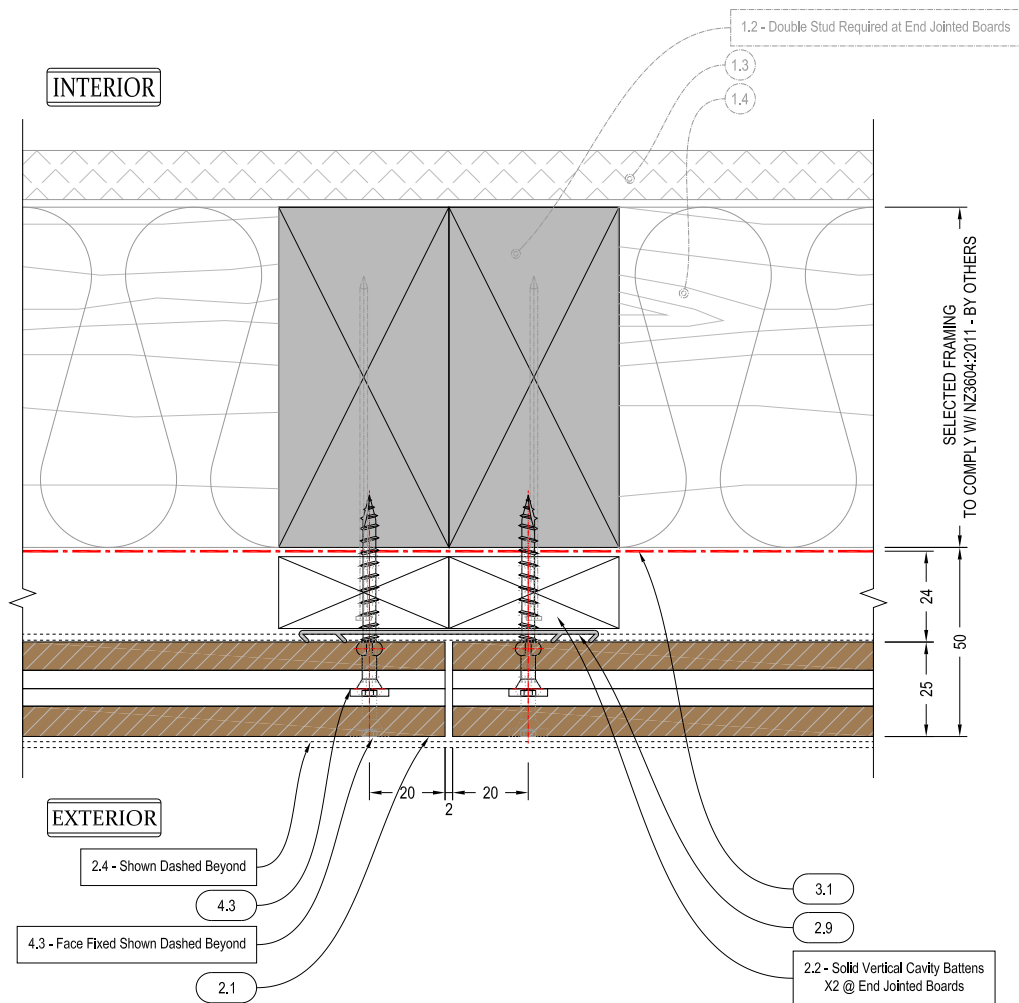
v1.2

Revision Date

Dec. 2019

Scale @ A4:

1:2



1. Structure : By Others

- 1.1 Concrete
- 1.2 Timber
- 1.3 Internal Lining
- 1.4 Insulation
- 1.5 Fibre Cement RWU
- 1.6 Window Joinery
- 1.7 Approved Sealant on PEF Rod to suit gap

2. Cladding Elements : Supply By SPS

- 2.1 InnoClad Horizontal Shiplap Weatherboard Cladding
- 2.2 H3.2 45x20mm Vertical Timber Cavity Battens - Nailed/Screwed @ Manuf. Spec ϵ/ϵ
- 2.3 AF3000H1 : J-Mould
Alu, Extrusion
- 2.4 AF4000H9 : Drained J-Mould
Alu, Extrusion

2.5 AF3000H8-Internal W-Corner

- Alu, Extrusion
- 2.6 AF3000H2 : External Corner
Alu, Extrusion
- 2.7 AF##### 2pc J-Mould
Alu, Extrusion
- 2.8 AF##### Inter-storey Flashing
Alu, Extrusion
- 2.9 GA+HSL-V01 - EPDM Joint Closer Gasket

3. Suggested Membrane & Tapes :

- Supply By Proclima
- 3.1 Solitex Extasana - Weathertightness Membrane
- 3.2 Tescon Extoseal Sill Tape -150mm
- 3.3 Tescon Extora Fabric Flashing Tape -60mm
- 3.4 Tescon AdhisoWS - Wet Seal Adhesion Tape

4. Fixings

- 4.1 SS304 8gx20mm CSK ST Screw #2 Sq.Dr
- 4.2 SS304 8gx35mm PH ST Screw #2 Sq.Dr
- 4.3 SS304 10g x40 WingNek T138 - T20.Dr

5. Flashings

- 5.1 AL 1.6mm Custom Folded

SPS BUILDING

ROOFING & BUILDING PRODUCTS

SPS Roofing and Building Limited
220B Bush Road, Rosedale, Auckland, New Zealand,
T : +64 9 415 2669 | www.spsbuilding.co.nz

Sheet Title:

Vertical Joint
Typical Plan Detail
Horizontal Shiplap Cladding



Sheet Status:

Architectural
Resource
For Information & Design

Sheet Number:

IC-H20-001

Revision:

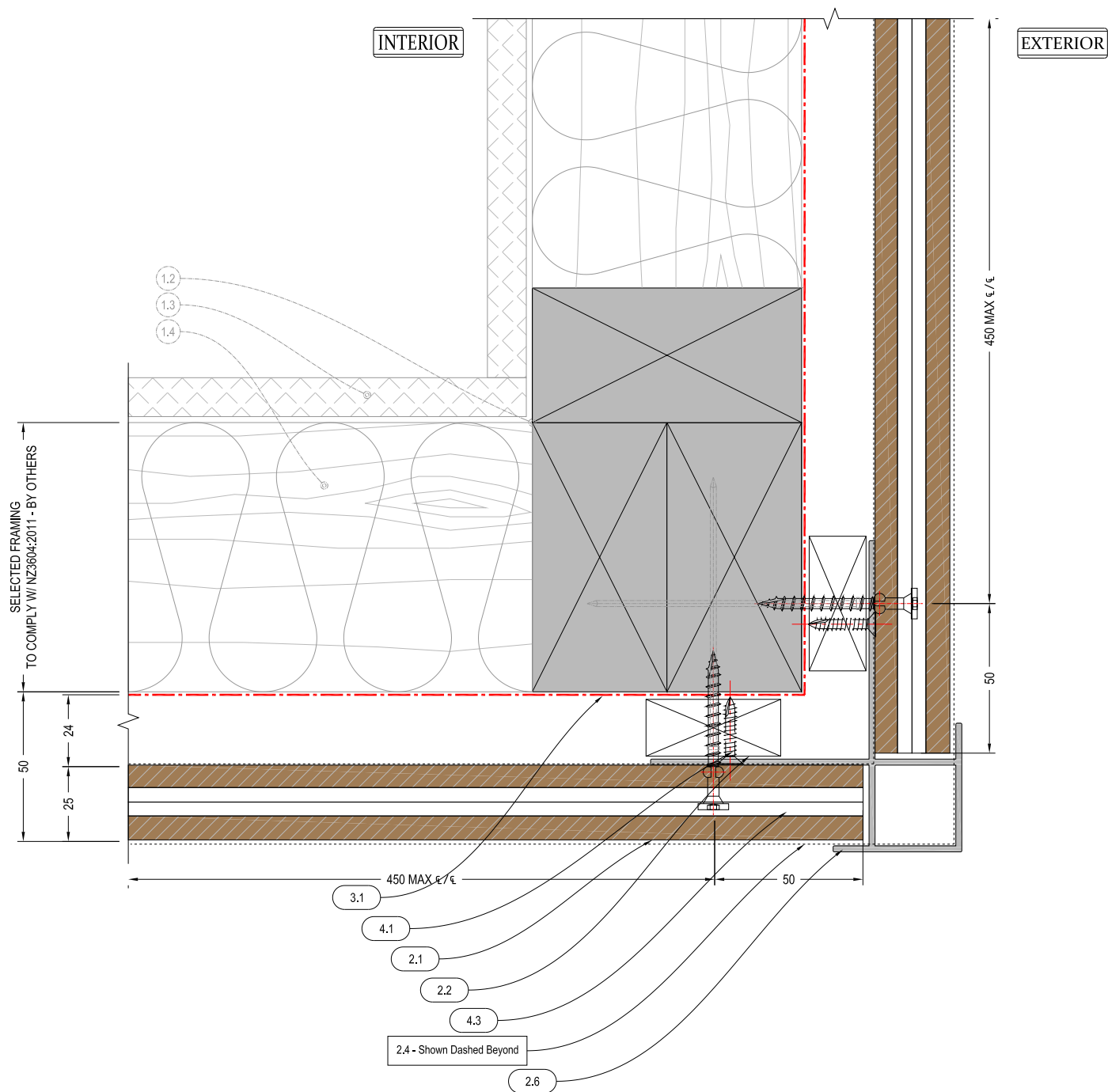
v1.2

Revision Date

Dec. 2019

Scale @ A4:

1:2



1. Structure : By Others

- 1.1 Concrete
- 1.2 Timber
- 1.3 Internal Lining
- 1.4 Insulation
- 1.5 Fibre Cement RWU
- 1.6 Window Joinery
- 1.7 Approved Sealant on PEF Rod to suit gap

2. Cladding Elements : Supply By SPS

- 2.1 InnoClad Horizontal Shiplap Weatherboard Cladding
- 2.2 H3.2 45x20mm Vertical Timber Cavity Battens - Nailed/Screwed @ Manuf. Spec ϵ/ϵ
- 2.3 AF3000H1 : J-Mould
- 2.4 AF4000H9 : Drained J-Mould

2.5 AF3000H8-Internal W-Corner

- 2.6 AF3000H2 : External Corner
- 2.7 AF#####- 2pc J-Mould
- 2.8 AF#####- Inter-storey Flashing
- 2.9 GA+HSL-V01 - EPDM Joint Closer Gasket

3. Suggested Membrane & Tapes :

- Supply By Proclima
- 3.1 Solitex Extasana - Weathertightness Membrane
- 3.2 Tescon Extoseal Sill Tape -150mm
- 3.3 Tescon Extora Fabric Flashing Tape -60mm
- 3.4 Tescon AdhisoWS - Wet Seal Adhesion Tape

4. Fixings

- 4.1 SS304 8gx20mm CSK ST Screw #2 Sq,Dr
- 4.2 SS304 8gx35mm PH ST Screw #2 Sq,Dr
- 4.3 SS304 10g x40 WingNek T138 - T20,Dr

5. Flashings

- 5.1 AL 1.6mm Custom Folded

SPS BUILDING

ROOFING & BUILDING PRODUCTS

SPS Roofing and Building Limited
220B Bush Road, Rosedale, Auckland, New Zealand,
T : +64 9 415 2669 | www.spsbuilding.co.nz

Sheet Title:

External Corner
Typical Plan Detail
Horizontal Shiplap Cladding



Sheet Status:

Architectural
Resource
For Information & Design

Sheet Number:

IC-H20-002

Revision:

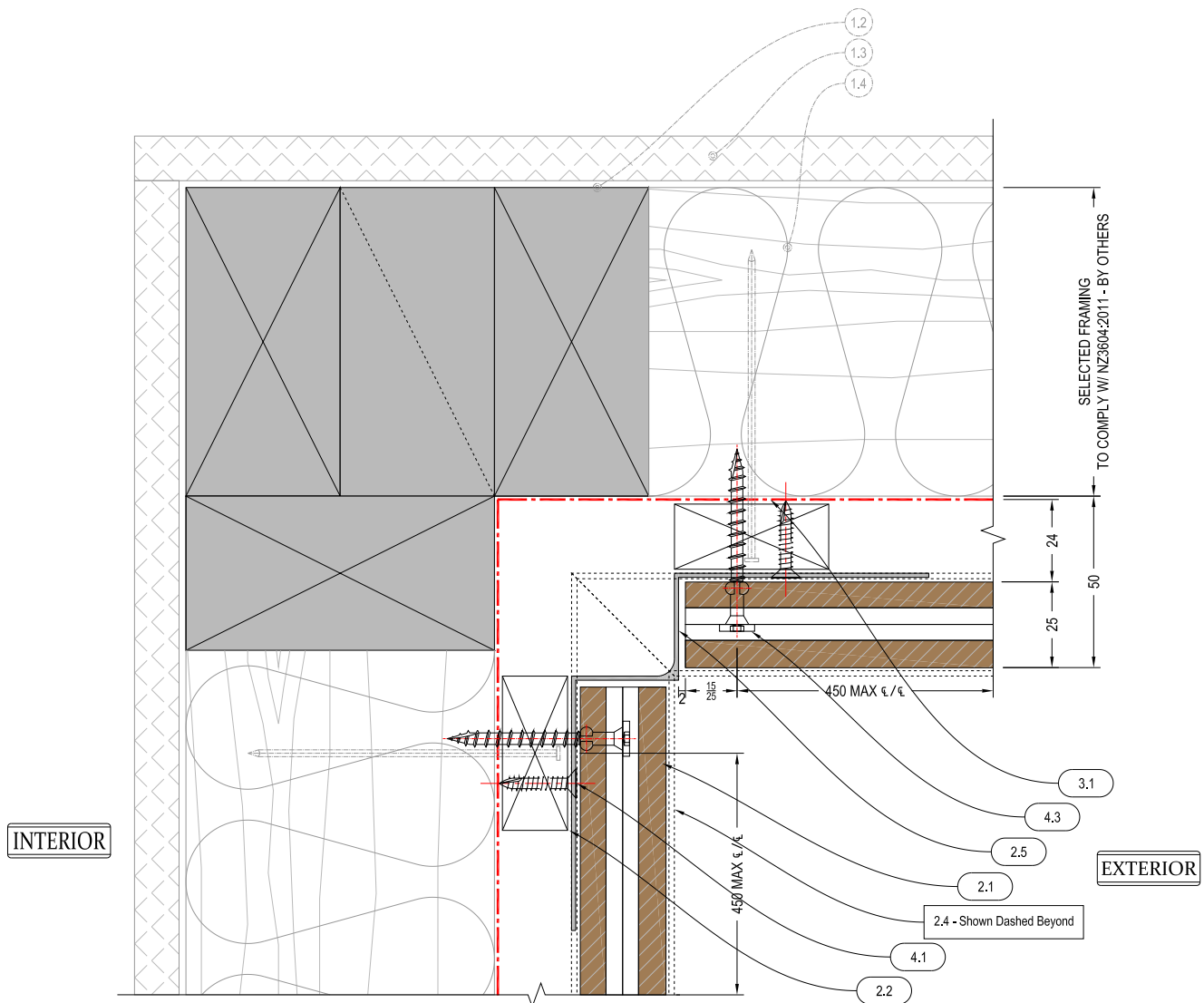
v1.2

Revision Date

Dec. 2019

Scale @ A4:

1:2



1. Structure : By Others

- 1.1 Concrete
- 1.2 Timber
- 1.3 Internal Lining
- 1.4 Insulation
- 1.5 Fibre Cement RWU
- 1.6 Window Joinery
- 1.7 Approved Sealant on PEF Rod to suit gap

2. Cladding Elements : Supply By SPS

- 2.1 InnoClad Horizontal Shiplap Weatherboard Cladding
- 2.2 H3.2 45x20mm Vertical Timber Cavity Battens - Nailed/Screwed @ Manuf. Spec ϵ/ϵ
- 2.3 AF3000H1 : J-Mould
Alu, Extrusion
- 2.4 AF4000H9 : Drained J-Mould
Alu, Extrusion

2.5 AF3000H8-Internal W-Corner

- 2.6 AF3000H2 : External Corner
Alu, Extrusion
- 2.7 AF##### 2pc J-Mould
Alu, Extrusion
- 2.8 AF##### Inter-storey Flashing
Alu, Extrusion
- 2.9 GA+HSL-V01 - EPDM Joint Closer Gasket

3. Suggested Membrane & Tapes :

- Supply By Proclima
- 3.1 Solitex Extasana - Weatherightness Membrane
 - 3.2 Tescon Extoseal Sill Tape -150mm
 - 3.3 Tescon Extora Fabric Flashing Tape -60mm
 - 3.4 Tescon AdhisoWS - Wet Seal Adhesion Tape

4. Fixings

- 4.1 SS304 8gx20mm CSK ST Screw #2 Sq,Dr
- 4.2 SS304 8gx35mm PH ST Screw #2 Sq,Dr
- 4.3 SS304 10g x40 WingNek T138 - T20,Dr

5. Flashings

- 5.1 AL 1.6mm Custom Folded

SPS BUILDING

ROOFING & BUILDING PRODUCTS

SPS Roofing and Building Limited
220B Bush Road, Rosedale, Auckland, New Zealand,
T : +64 9 415 2669 | www.spsbuilding.co.nz

Sheet Title:

Internal Corner
Typical Plan Detail
Horizontal Shiplap Cladding



Sheet Status:

Architectural
Resource
For Information & Design

Sheet Number:

IC-H20-003

Revision:

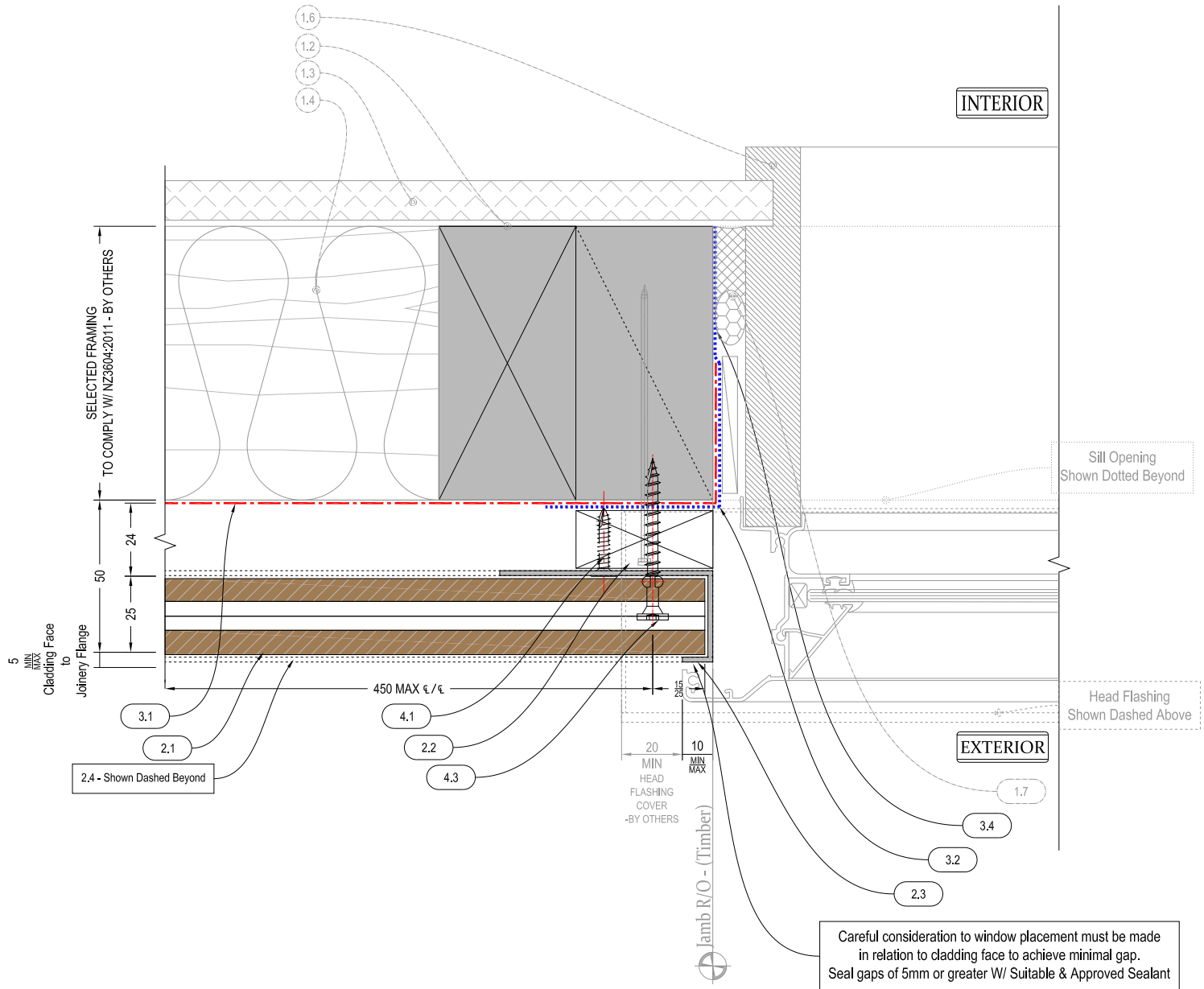
v1.2

Revision Date

Dec. 2019

Scale @ A4:

1:2



1. Structure : By Others

- 1.1 Concrete
- 1.2 Timber
- 1.3 Internal Lining
- 1.4 Insulation
- 1.5 Fibre Cement RWU
- 1.6 Window Joinery
- 1.7 Approved Sealant on PEF Rod to suit gap

2. Cladding Elements : Supply By SPS

- 2.1 InnoClad Horizontal Shiplap Weatherboard Cladding
- 2.2 H3.2 45x20mm Vertical Timber Cavity Battens - Nailed/Screwed @ Manuf. Spec ϵ/ϵ
- 2.3 AF3000H1 : J-Mould
- 2.4 AF4000H9 : Drained J-Mould

2.5 AF3000H8-Internal W-Corner

- 2.6 AF3000H2 : External Corner
- 2.7 AF#####- 2pc J-Mould
- 2.8 AF#####- Inter-storey Flashing
- 2.9 GA+HSL-V01 - EPDM Joint Closer Gasket

3. Suggested Membrane & Tapes :

- Supply By Proclima
- 3.1 Solitex Extasana - Weathertightness Membrane
- 3.2 Tescon Extoseal Sill Tape -150mm
- 3.3 Tescon Extora Fabric Flashing Tape -60mm
- 3.4 Tescon AdhisoWS - Wet Seal Adhesion Tape

4. Fixings

- 4.1 SS304 8gx20mm CSK ST Screw #2 Sq.Dr
- 4.2 SS304 8gx35mm PH ST Screw #2 Sq.Dr
- 4.3 SS304 10g x40 WingNek T138 - T20.Dr

5. Flashings

- 5.1 AL 1.6mm Custom Folded

SPS BUILDING

ROOFING & BUILDING PRODUCTS

SPS Roofing and Building Limited
220B Bush Road, Rosedale, Auckland, New Zealand,
T : +64 9 415 2669 | www.spsbuilding.co.nz

Sheet Title:

Window Jamb
Typical Section Detail
Horizontal Shiplap Cladding

Original In Colour

Sheet Status:

Architectural
Resource
For Information & Design

Sheet Number:

IC-H20-004

Revision:

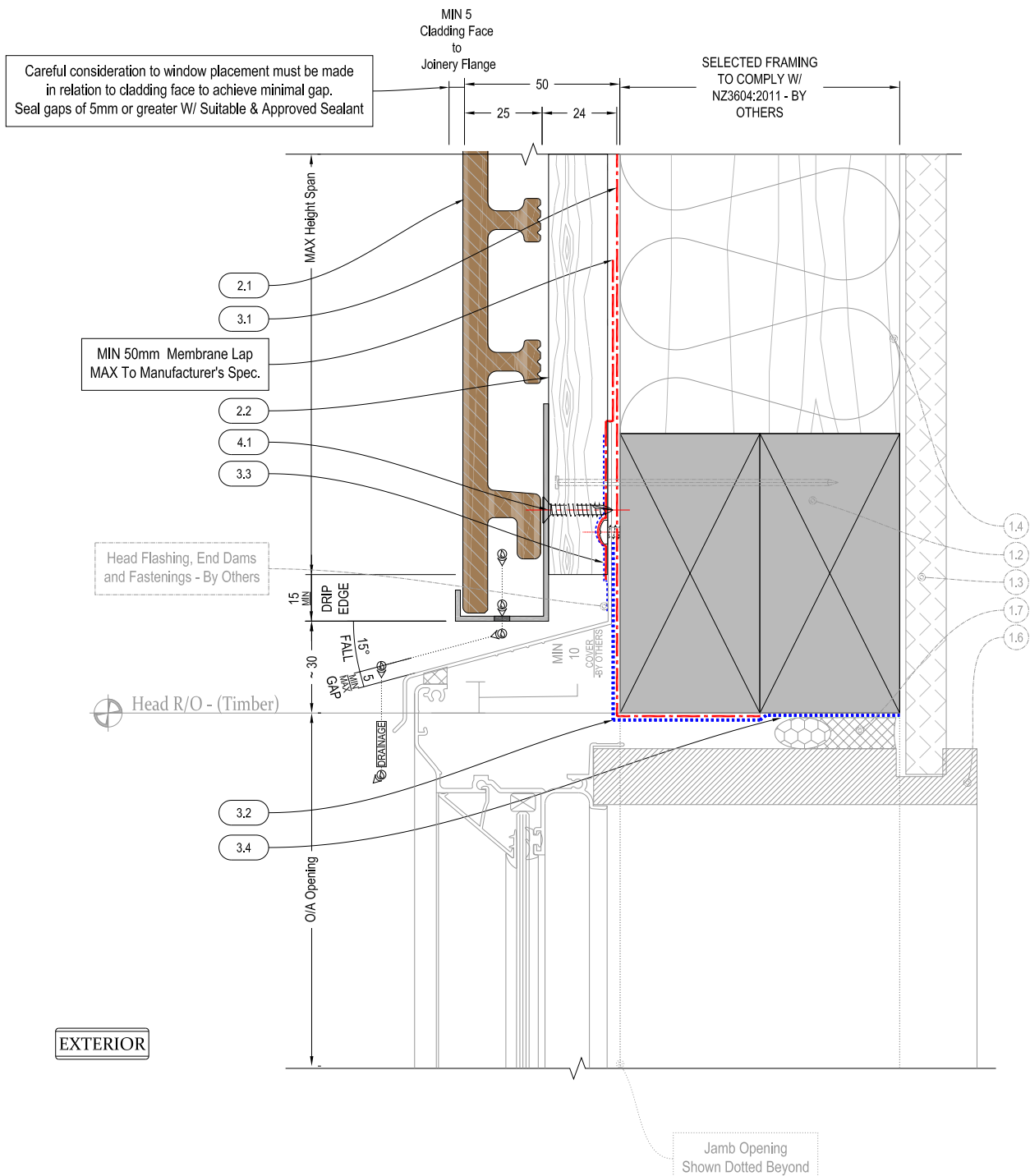
v1.2

Revision Date

Dec. 2019

Scale @ A4:

1:2



1. Structure : By Others

- 1.1 Concrete
- 1.2 Timber
- 1.3 Internal Lining
- 1.4 Insulation
- 1.5 Fibre Cement RWU
- 1.6 Window Joinery
- 1.7 Approved Sealant on PEF Rod to suit gap

2. Cladding Elements : Supply By SPS

- 2.1 InnoClad Horizontal Shiplap Weatherboard Cladding
- 2.2 H3.2 45x20mm Vertical Timber Cavity Battens - Nailed/Screwed @ Manuf. Spec. € / m
- 2.3 AF3000H1 : J-Mould
- 2.4 AF4000H9 : Drained J-Mould

2.5 AF3000H8-Internal W-Corner

- 2.6 AF3000H2 : External Corner
- 2.7 AF##### 2pc J-Mould
- 2.8 AF##### Inter-storey Flashing
- 2.9 GA+HSL-V01 - EPDM Joint Closer Gasket

3. Suggested Membrane & Tapes :

- Supply By Proclima
- 3.1 Solitex Extasana - Weatherightness Membrane
- 3.2 Tescon Extoseal Sill Tape -150mm
- 3.3 Tescon Extora Fabric Flashing Tape -60mm
- 3.4 Tescon AdhisoWS - Wet Seal Adhesion Tape

4. Fixings

- 4.1 SS304 8gx20mm CSK ST Screw #2 Sq.Dr
- 4.2 SS304 8gx35mm PH ST Screw #2 Sq.Dr
- 4.3 SS304 10g x40 WingNek T138 - T20.Dr

5. Flashings

- 5.1 AL, 1.6mm Custom Folded

SPS BUILDING

ROOFING & BUILDING PRODUCTS

SPS Roofing and Building Limited
220B Bush Road, Rosedale, Auckland, New Zealand,
T : +64 9 415 2669 | www.spsbuilding.co.nz

Sheet Title:

Window Head
Typical Section Detail
Horizontal Shiplap Cladding

Sheet Status:

Architectural
Resource
For Information & Design

Sheet Number:

IC-H20-005

Revision:

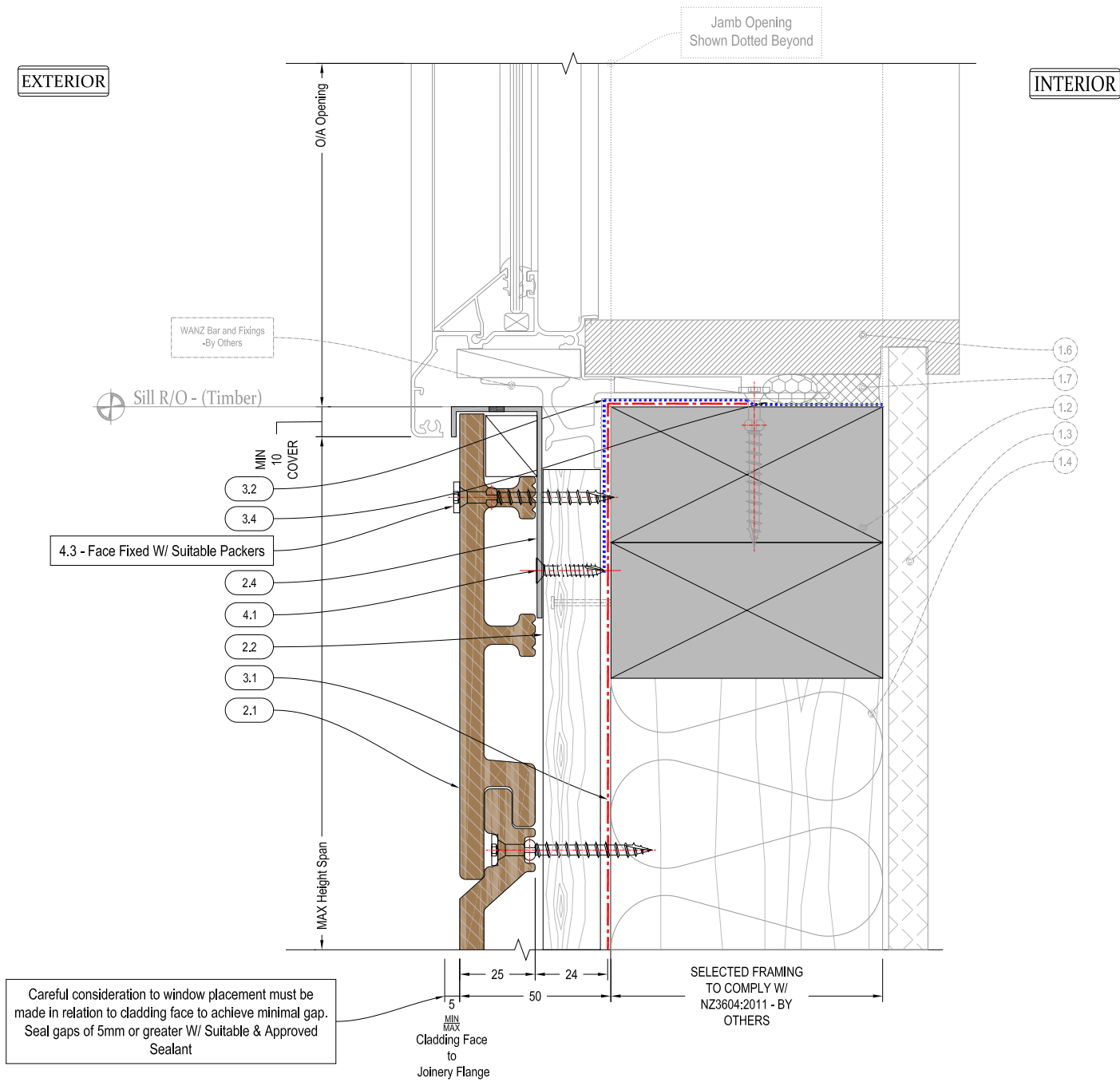
v1.2

Revision Date

Dec. 2019

Scale @ A4:

1:2



1. Structure : By Others

- 1.1 Concrete
- 1.2 Timber
- 1.3 Internal Lining
- 1.4 Insulation
- 1.5 Fibre Cement RWU
- 1.6 Window Joinery
- 1.7 Approved Sealant on PEF Rod to suit gap

2. Cladding Elements : Supply By SPS

- 2.1 InnoClad Horizontal Shiplap Weatherboard Cladding
- 2.2 H3.2 45x20mm Vertical Timber Cavity Battens - Nailed/Screwed @ Manuf. Spec ϵ/ϵ
- 2.3 AF3000H1 : J-Mould
- 2.4 AF4000H9 : Drained J-Mould

2.5 AF3000H8-Internal W-Corner

- 2.6 AF3000H2 : External Corner
- 2.7 AF#####-2pc J-Mould
- 2.8 AF#####-Inter-storey Flashing
- 2.9 GA+HSL-V01 - EPDM Joint Closer Gasket

3. Suggested Membrane & Tapes :

- Supply By Proclima
- 3.1 Solitex Extasana - Weatherightness Membrane
- 3.2 Tescon Extoseal Sill Tape -150mm
- 3.3 Tescon Extora Fabric Flashing Tape -60mm
- 3.4 Tescon AdhisoWS - Wet Seal Adhesion Tape

4. Fixings

- 4.1 SS304 8gx20mm CSK ST Screw #2 SqDr
- 4.2 SS304 8gx35mm PH ST Screw #2 SqDr
- 4.3 SS304 10g x40 WingNek T138 - T20Dr

5. Flashings

- 5.1 AL, 1.6mm Custom Folded

SPS BUILDING

ROOFING & BUILDING PRODUCTS

SPS Roofing and Building Limited
220B Bush Road, Rosedale, Auckland, New Zealand,
T : +64 9 415 2669 | www.spsbuilding.co.nz

Sheet Title:

Window Sill
Typical Section Detail
Horizontal Shiplap Cladding

Original In Colour

Sheet Status:

Architectural
Resource
For Information & Design

Sheet Number:

IC-H20-006

Revision:

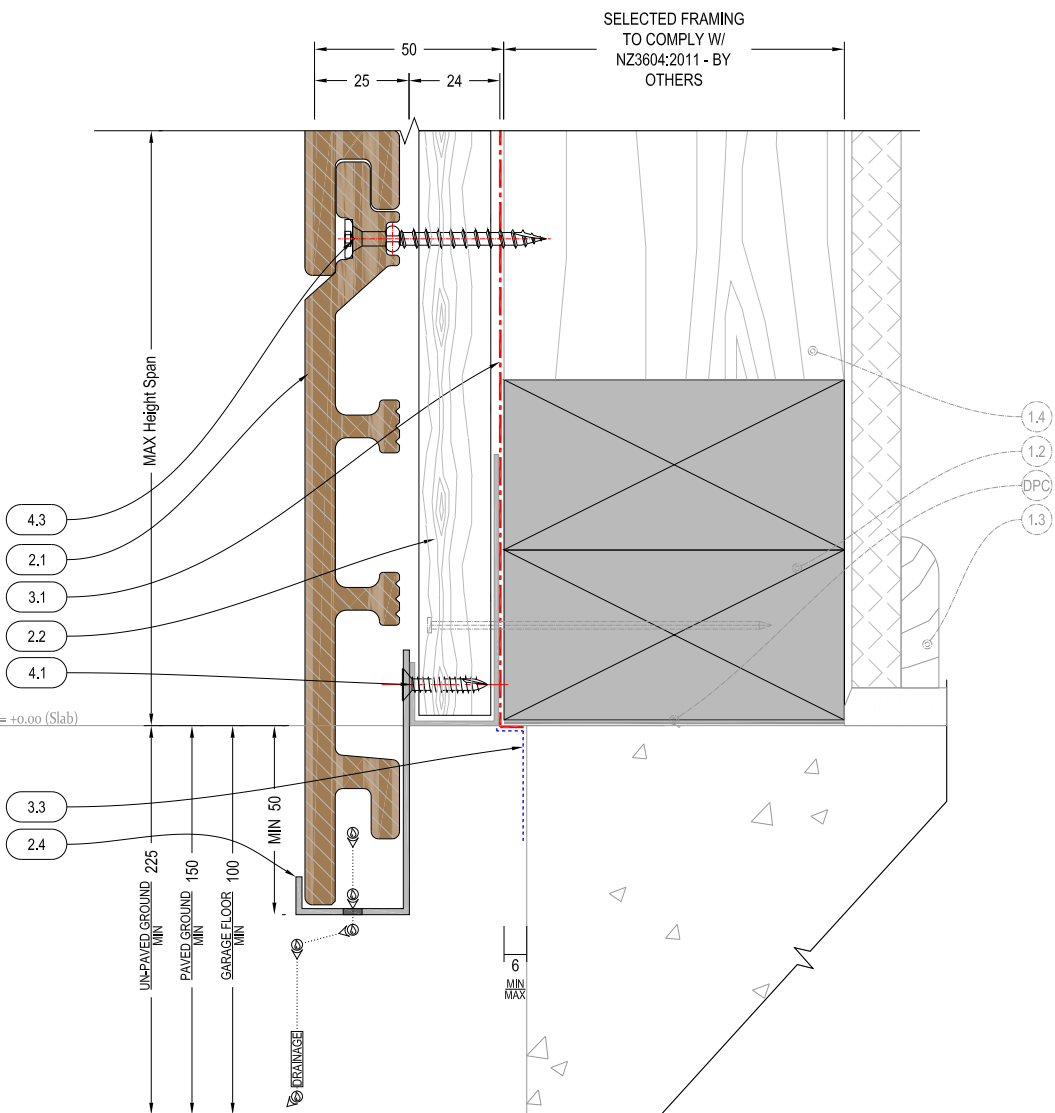
v1.2

Revision Date



Dec. 2019

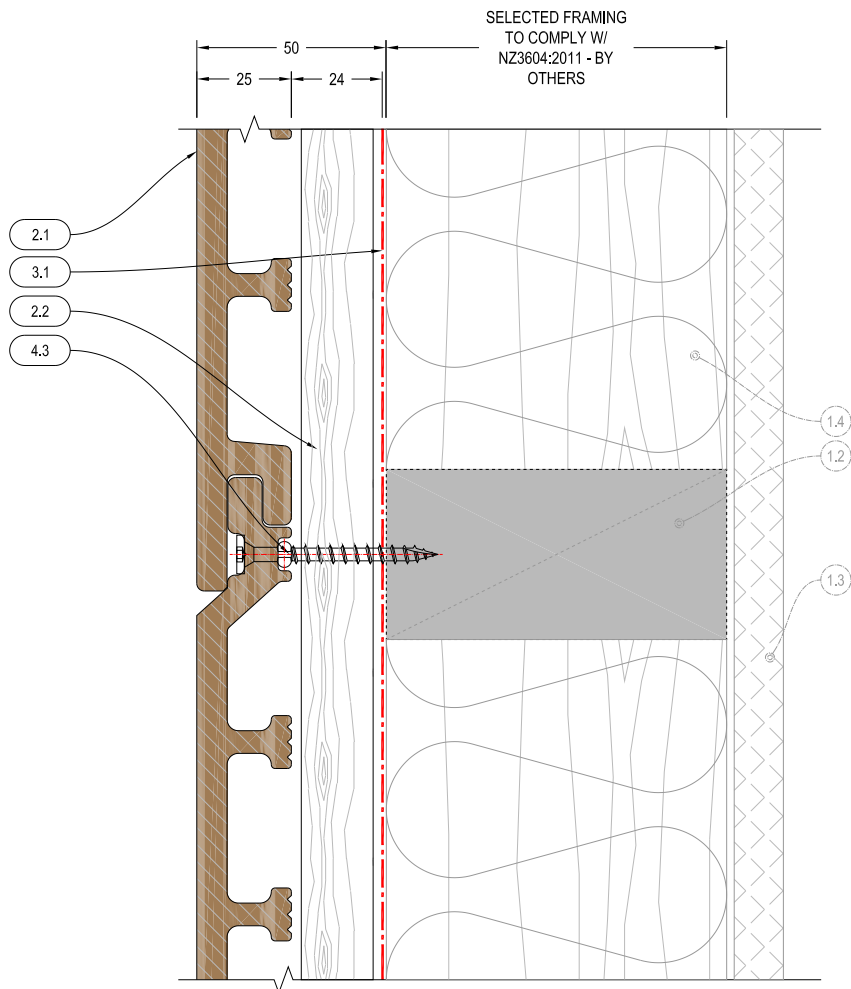
Scale @ A4:

1:2



1. Structure : By Others	2. Cladding Elements : Supply By SPS	2.5 AF3000H4:Internal W-Corner Alu, Extrusion	3. Suggested Membrane & Tapes : Supply By Proclima	4. Fixings 4.1 SS304 8gx20mm CSK ST Screw #2 Sq,Dr	5. Flashings 5.1 AL, 1.8mmCustom Folded
1.1 Concrete	2.1 InnoClad Horizontal Shlap Weatherboard Cladding	2.6 AF3000H2 : External Corner Alu, Extrusion	3.1 Soliflex Extrasana - Weatherightness Membrane	4.2 SS304 8gx35mm PH ST Screw #2 Sq,Dr	
1.2 Timber	2.2 H3.2 45x20mm Vertical Timber Cavity Battens - Nailed/Screwed @ Manuf. Spec. 1/4"	2.7 AF##### 2pc J-Mould Alu, Extrusion	3.2 Tescon Extraseal Sill Tape -150mm	4.3 SS304 10g x40 WingNek T138 - T20,Dr	
1.3 Internal Lining	2.3 AF3000H1 : J-Mould Alu, Extrusion	2.8 AF##### Inta-storey Flashing Alu, Extrusion	3.3 Tescon Extora Fabric Flashing Tape -60mm		
1.4 Insulation	2.4 AF4000H: Drained J-Mould Alu, Extrusion	2.9 GA+HSL+V1 - EPDM Joint Closer Gasket	3.4 Tescon AdhisoWS - Wet Seal Adhesion Tape		
1.5 Fibre Cement RWU					
1.6 Window Joinery					
1.7 Approved Sealant on PEF Rod to suit gap					

 <div> <div>ROOFING & BUILDING PRODUCTS</div> <div> SPS Roofing and Building Limited 220B Bush Road, Rosedale, Auckland, New Zealand, T : +64 9 415 2669 www.spsbuilding.co.nz </div> </div>	Sheet Title:		Sheet Status:		Sheet Number:		Revision:		
	<div> Foundation Termination Typical Section Detail Horizontal Shiplap Cladding </div> 		<div> Architectural Resource For Information & Design </div>		IC-H20-007		v1.2		
					Revision Date		Dec. 2019		
						Scale @ A4:		1:2	



1. Structure : By Others

- 1.1 Concrete
- 1.2 Timber
- 1.3 Internal Lining
- 1.4 Insulation
- 1.5 Fibre Cement RWU
- 1.6 Window Joinery
- 1.7 Approved Sealant on PEF Rod to suit gap

2. Cladding Elements : Supply By SPS

- 2.1 InnoClad Horizontal Shiplap Weatherboard Cladding
- 2.2 H3.2 45x20mm Vertical Timber Cavity Battens - Nailed/Screwed @ Manuf. Spec ϵ/ϵ
- 2.3 AF3000H1 : J-Mould
- 2.4 AF4000H9 : Drained J-Mould

2.5 AF3000H8-Internal W-Corner

- 2.6 AF3000H2 : External Corner
- 2.7 AF3000H1 : J-Mould
- 2.8 AF4000H9 : Drained J-Mould
- 2.9 GA+HSL-V01 - EPDM Joint Closer Gasket

3. Suggested Membrane & Tapes :

- 3.1 Solitex Extasana - Weatherightness Membrane
- 3.2 Tescon Extoseal Sill Tape -150mm
- 3.3 Tescon Extora Fabric Flashing Tape -60mm
- 3.4 Tescon AdhisoWS - Wet Seal Adhesion Tape

4. Fixings

- 4.1 SS304 8gx20mm CSK ST Screw #2 Sq,Dr
- 4.2 SS304 8gx35mm PH ST Screw #2 Sq,Dr
- 4.3 SS304 10g x40 WingNek T138 - T20,Dr

5. Flashings

- 5.1 AL 1.6mm Custom Folded

SPS BUILDING

ROOFING & BUILDING PRODUCTS

SPS Roofing and Building Limited
220B Bush Road, Rosedale, Auckland, New Zealand,
T : +64 9 415 2669 | www.spsbuilding.co.nz

Sheet Title:

Horizontal Joint
Typical Section Detail
Horizontal Shiplap Cladding



Sheet Status:

Architectural
Resource
For Information & Design

Sheet Number:

IC-H20-008

Revision:

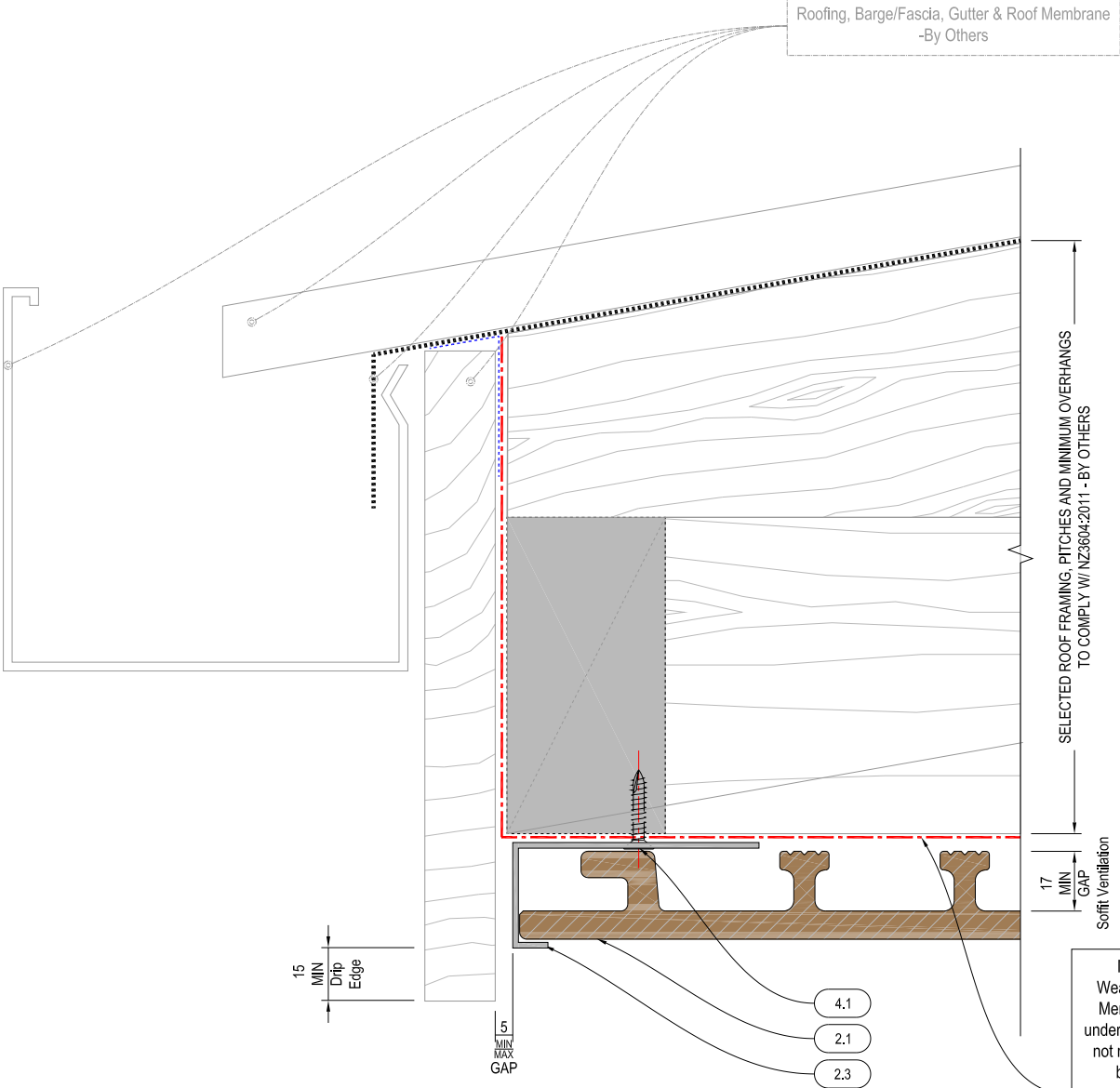
v1.2

Revision Date

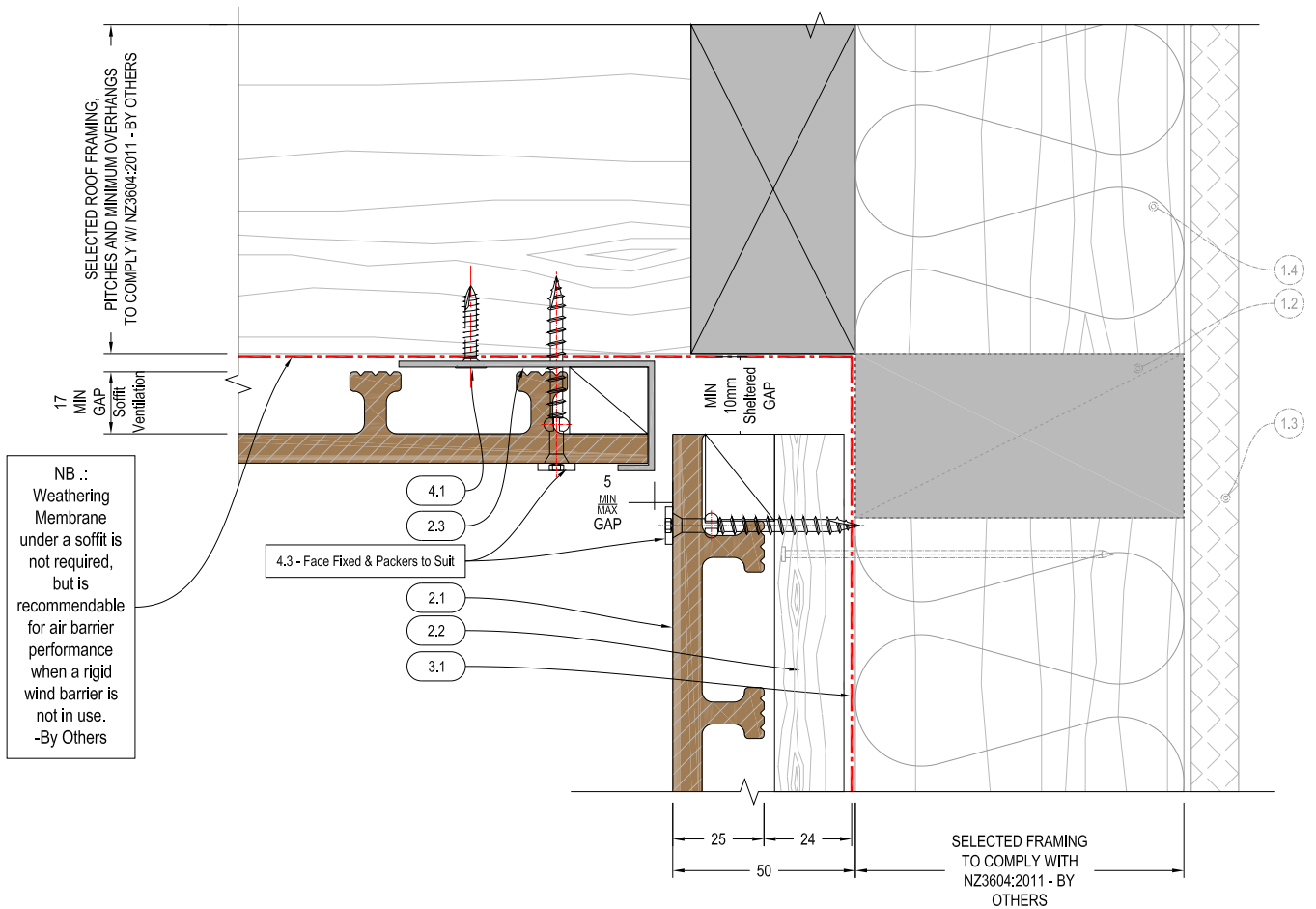
Dec. 2019

Scale @ A4:

1:2



1. Structure : By Others	2. Cladding Elements : Supply By SPS	2.5 AF3000H4:Internal W-Corner Alu, Extrusion	3. Suggested Membrane & Tapes : Supply By Proclima	4. Fixings 4.1 SS304 8gx20mm CSK ST Screw #2 Sq,Dr	5. Flashings 5.1 AL, 1.8mmCustom Folded
1.1 Concrete	2.1 InnoClad Horizontal S/Slap Weatherboard Cladding	2.6 AF3000H2 : External Corner Alu, Extrusion	3.1 Soliflex Extraxana - Weatheright/htness Membrane	4.2 SS304 8gx35mm PH ST Screw #2 Sq,Dr	
1.2 Timber	2.2 H3.2 45x20mm Vertical Timber Cavity Battens - Nailed/Screwed @ Manuf. Spec 1/4"	2.7 AF##### 2pc J-Mould Alu, Extrusion	3.2 Tescon Extraseal Sill Tape -150mm	4.3 SS304 10g x40 WingNek T138 - T20,Dr	
1.3 Internal Lining	2.3 AF3000H1 : J-Mould Alu, Extrusion	2.8 AF##### Inta-storey Flashing Alu, Extrusion	3.3 Tescon Extora Fabric Flashing Tape -60mm		
1.4 Insulation	2.4 AF4000H: Drained J-Mould Alu, Extrusion	2.9 GA+HSL+V1 - EPDM Joint Closer Gasket	3.4 Tescon AdhisoWS - Wet Seal Adhesion Tape		
1.5 Fibre Cement RWU					
1.6 Window Joinery					
1.7 Approved Sealant on PEF Rod to suit gap					



1. Structure : By Others

- 1.1 Concrete
- 1.2 Timber
- 1.3 Internal Lining
- 1.4 Insulation
- 1.5 Fibre Cement RWU
- 1.6 Window Joinery
- 1.7 Approved Sealant on PEF Rod to suit gap

2. Cladding Elements : Supply By SPS

- 2.1 InnoClad Horizontal Shiplap Weatherboard Cladding
- 2.2 H3.2 45x20mm Vertical Timber Cavity Battens - Nailed/Screwed @ Manuf. Spec $\frac{1}{4}$ / $\frac{1}{4}$
- 2.3 AF3000H1 : J-Mould
- 2.4 AF4000H9 : Drained J-Mould

2.5 AF3000H8-Internal W-Corner

- 2.6 AF3000H2 : External Corner
- 2.7 AF#####- 2pc J-Mould
- 2.8 AF#####- Inter-storey Flashing
- 2.9 GA+HSL-V01 - EPDM Joint Closer Gasket

3. Suggested Membrane & Tapes :

- Supply By Proclima
- 3.1 Solitex Extasana - Weatherlightness Membrane
- 3.2 Tescon Extoseal Sill Tape -150mm
- 3.3 Tescon Extora Fabric Flashing Tape -60mm
- 3.4 Tescon AdhisoWS - Wet Seal Adhesion Tape

4. Fixings

- 4.1 SS304 8gx20mm CSK ST Screw #2 Sq,Dr
- 4.2 SS304 8gx35mm PH ST Screw #2 Sq,Dr
- 4.3 SS304 10g x40 WingNek T138 - T20,Dr

5. Flashings

- 5.1 AL, 1.6mm/Custom Folded

SPS BUILDING

ROOFING & BUILDING PRODUCTS

SPS Roofing and Building Limited
220B Bush Road, Rosedale, Auckland, New Zealand,
T : +64 9 415 2669 | www.spsbuilding.co.nz

Sheet Title:

Soffit/Eave To Wall
Typical Section Detail
Horizontal Shiplap Cladding

Sheet Status:

Architectural
Resource
For Information & Design

Sheet Number:

IC-H20-010

Revision:

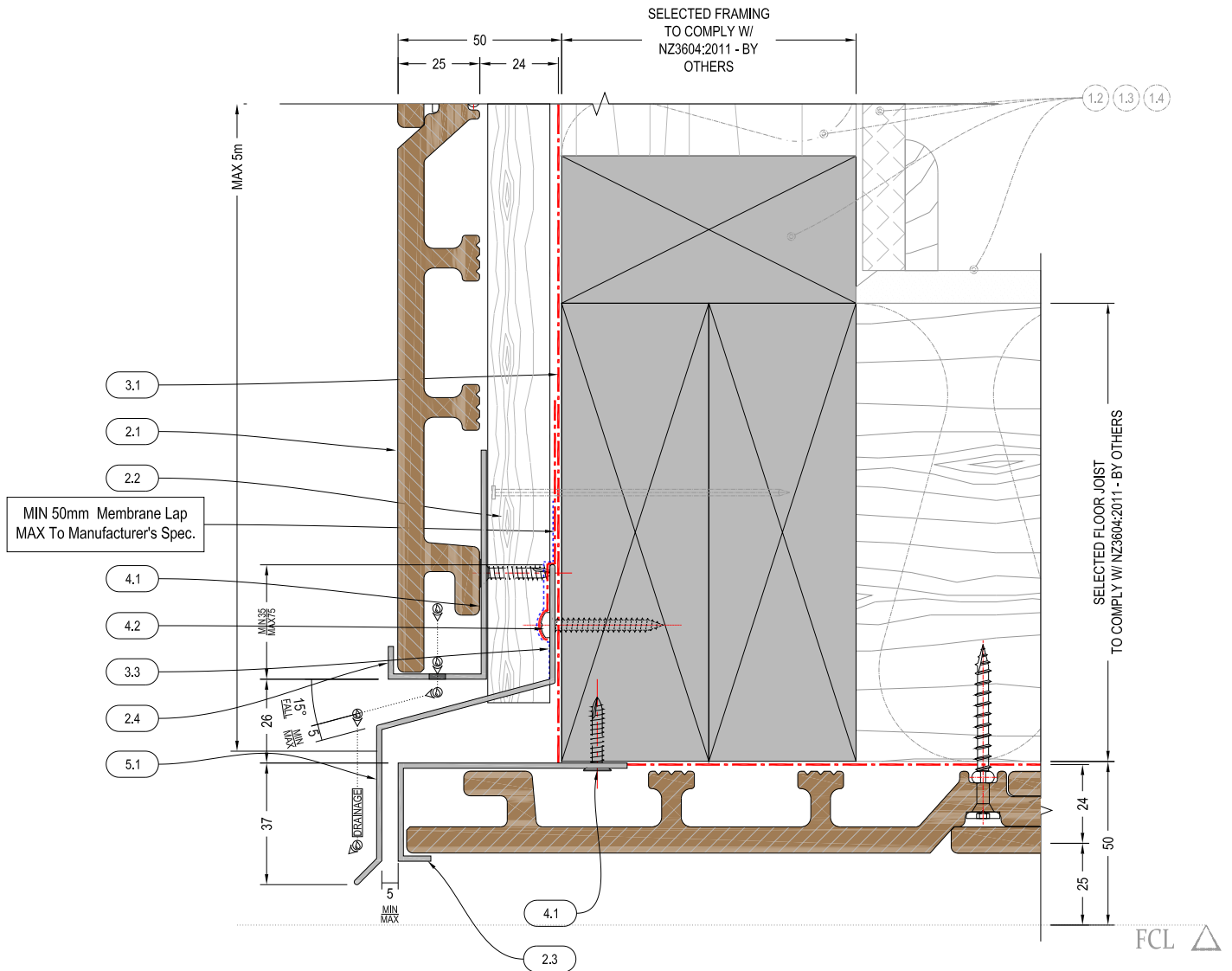
v1.2

Revision Date

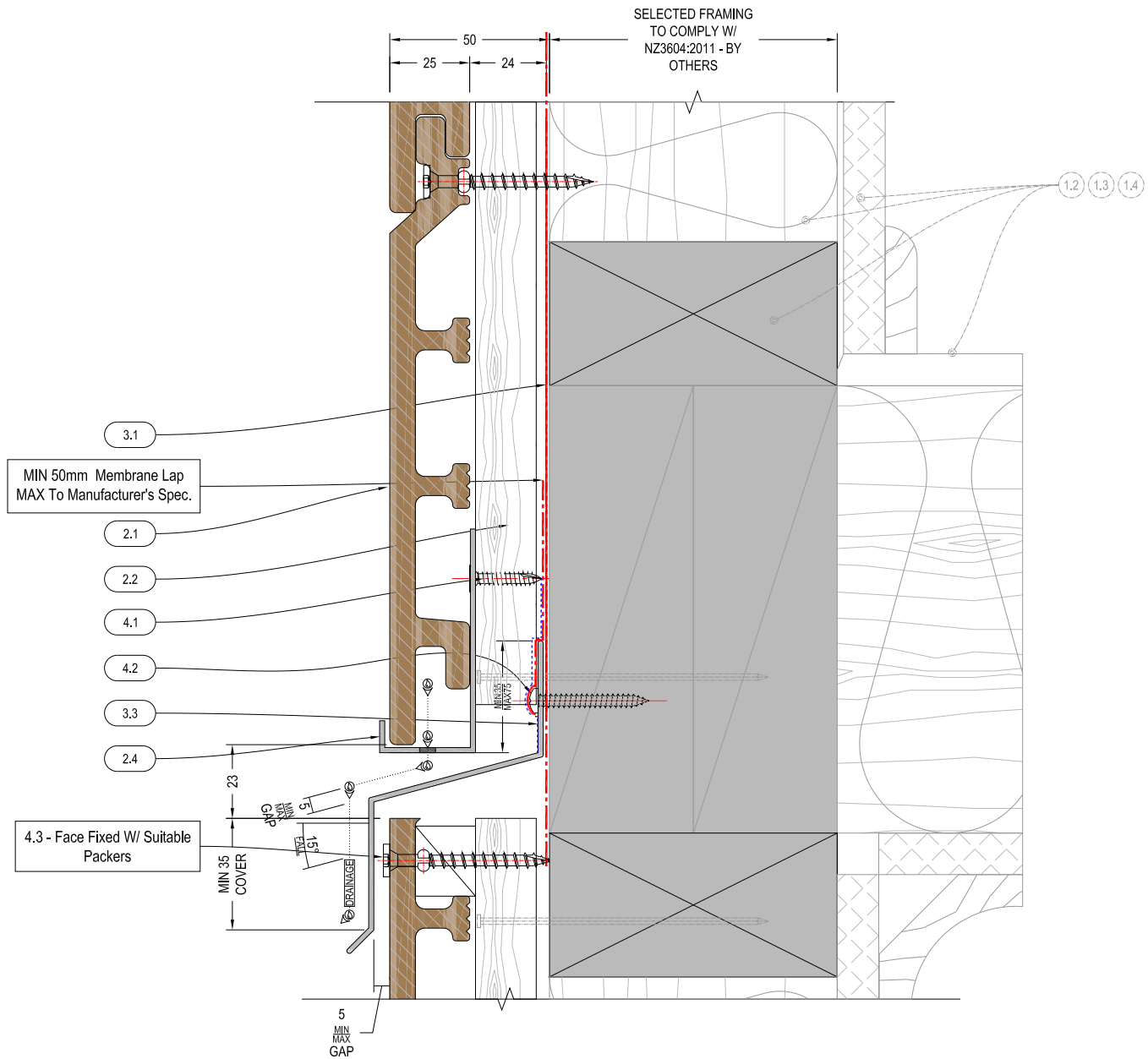
Dec. 2019

Scale @ A4:

1:2



- 5.1 AL. 1.6mmCustom Folded



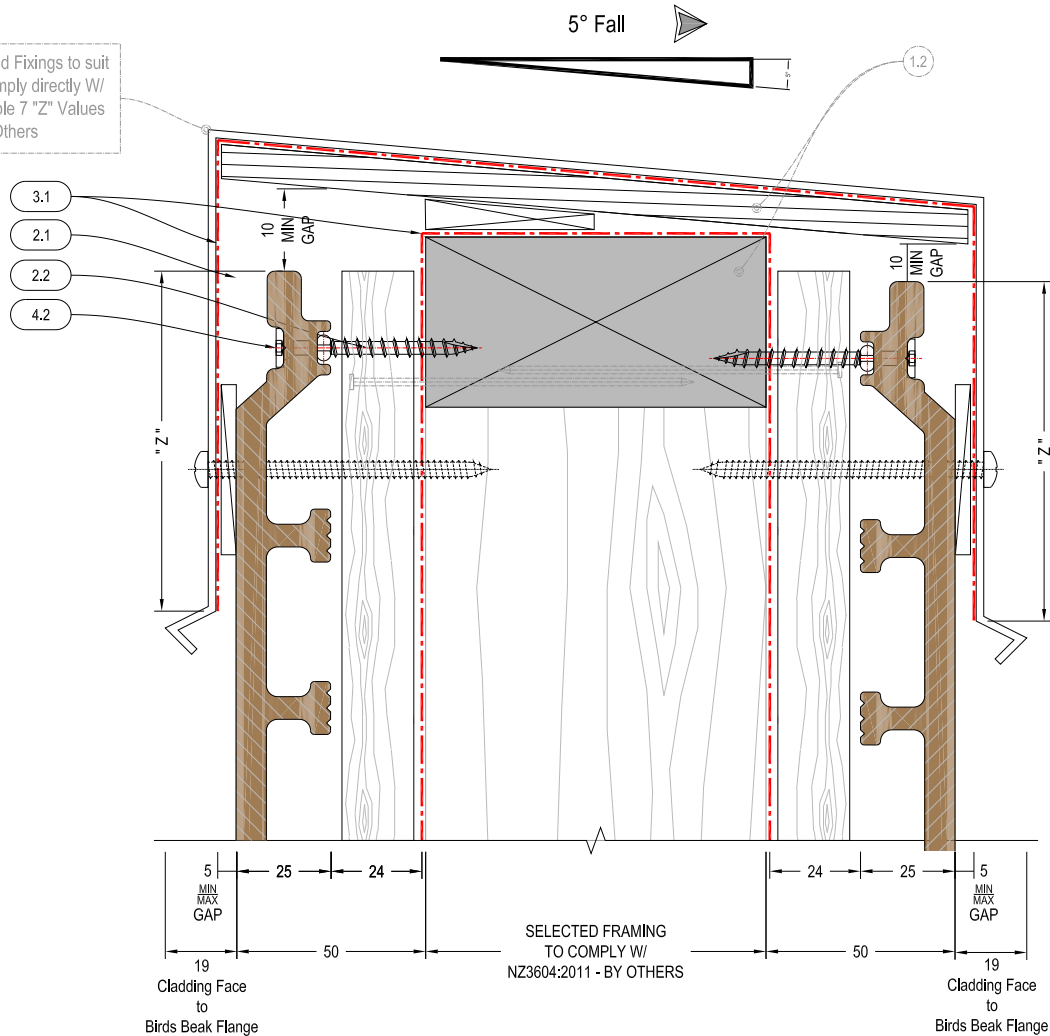
- 5.1 AL. 1.6mmCustom Folded

NZBC - Acceptable Solution E2/AS1:(2011)

Table 7 : Z Values for Parapet Capping Cover Selection

- Situation 1: Low, Medium, High wind zones, where roof pitch $\geq 10^\circ$ (X or Z values)
- Situation 2: All roof pitches in Very High wind zones, Low, Medium and High wind zones where roof pitch $\leq 10^\circ$. (X or Z values)
- Situation 3: For all roof pitches in Extra High wind zone.

Parapet Cap and Fixings to suit design and comply directly W/ NZBC- E2: Table 7 "Z" Values -By Others



1. Structure : By Others

- 1.1 Concrete
- 1.2 Timber
- 1.3 Internal Lining
- 1.4 Insulation
- 1.5 Fibre Cement RWU
- 1.6 Window Joinery
- 1.7 Approved Sealant on PEF Rod to suit gap

2. Cladding Elements : Supply By SPS

- 2.1 InnoClad Horizontal Shiplap Weatherboard Cladding
- 2.2 H3,2 45x20mm Vertical Timber Cavity Battens - Nailed/Screwed @ Manuf. Spec $\pm 1/4$
- 2.3 AF3000H1 : J-Mould
- 2.4 AF4000H9 : Drained J-Mould

2.5 AF3000H8-Internal W-Corner

- Alu, Extrusion
- 2.6 AF3000H2 : External Corner
- Alu, Extrusion
- 2.7 AF#####- 2pc J-Mould
- Alu, Extrusion
- 2.8 AF#####- Inter-storey Flashing
- Alu, Extrusion
- 2.9 GA+HSL-V01 - EPDM Joint Closer Gasket

3. Suggested Membrane & Tapes :

- Supply By Proclima
- 3.1 Solitex Extasana - Weatherlightness Membrane
- 3.2 Tescon Extoseal Sill Tape -150mm
- 3.3 Tescon Extora Fabric Flashing Tape -60mm
- 3.4 Tescon AdhisoWS - Wet Seal Adhesion Tape

4. Fixings

- 4.1 SS304 8x20mm CSK ST Screw #2 Sq,Dr
- 4.2 SS304 8x35mm PH ST Screw #2 Sq,Dr
- 4.3 SS304 10g x40 WingNek T138 - T20,Dr

5. Flashings

- 5.1 AL, 1.6mm Custom Folded

SPS BUILDING

ROOFING & BUILDING PRODUCTS

SPS Roofing and Building Limited
220B Bush Road, Rosedale, Auckland, New Zealand,
T : +64 9 415 2669 | www.spsbuilding.co.nz

Sheet Title:

Parapet Cap
Typical Section Detail
Horizontal Shiplap Cladding

Original In Colour

Sheet Status:

Architectural
Resource
For Information & Design

Sheet Number:

IC-H20-013

Revision:

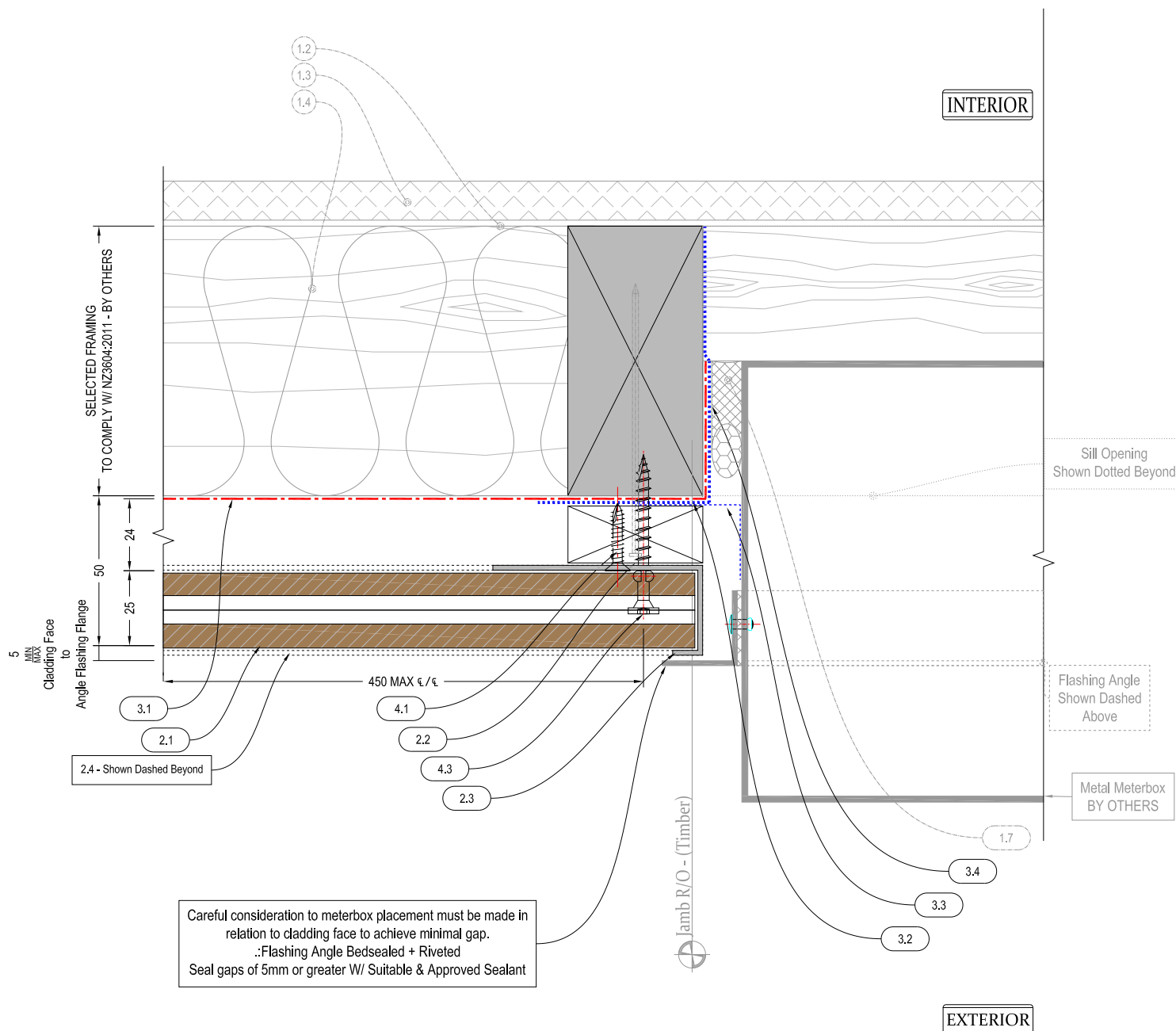
v1.2

Revision Date

Dec. 2019

Scale @ A4:

1:2



1. Structure : By Others

- 1.1 Concrete
- 1.2 Timber
- 1.3 Internal Lining
- 1.4 Insulation
- 1.5 Fibre Cement RWU
- 1.6 Window Joinery
- 1.7 Approved Sealant on PEF Rod to suit gap

2. Cladding Elements : Supply By SPS

- 2.1 InnoClad Horizontal Shiplap Weatherboard Cladding
- 2.2 H3,2 45x20mm Vertical Timber Cavity Battens - Nailed/Screwed @ Manuf. Spec ϵ/ϵ
- 2.3 AF3000H1 : J-Mould
- 2.4 AF4000H9 : Drained J-Mould

2.5 AF3000H8-Internal W-Corner

- 2.6 AF3000H2 : External Corner
- 2.7 AF#####- 2pc J-Mould
- 2.8 AF#####- Inter-storey Flashing
- 2.9 GA+HSL+V01 - EPDM Joint Closer Gasket

3. Suggested Membrane & Tapes :

- Supply By Proclima
- 3.1 Solitex Extasana - Weatherlightness Membrane
- 3.2 Tescon Extoseal Sill Tape -150mm
- 3.3 Tescon Extora Fabric Flashing Tape -60mm
- 3.4 Tescon AdhisowS - Wet Seal Adhesion Tape

4. Fixings

- 4.1 SS304 8gx20mm CSK ST Screw #2 Sq.Dr
- 4.2 SS304 8gx35mm PH ST Screw #2 Sq.Dr
- 4.3 SS304 10g x40 WingNek T138 - T20.Dr

5. Flashings

- 5.1 AL, 1.6mm Custom Folded

SPS BUILDING

ROOFING & BUILDING PRODUCTS

SPS Roofing and Building Limited
220B Bush Road, Rosedale, Auckland, New Zealand,
T: +64 9 415 2669 | www.spsbuilding.co.nz

Sheet Title:

Meterbox Jamb
Typical Section Detail
Horizontal Shiplap Cladding

Sheet Status:

Architectural
Resource
For Information & Design

Sheet Number:

IC-H20-014

Revision:

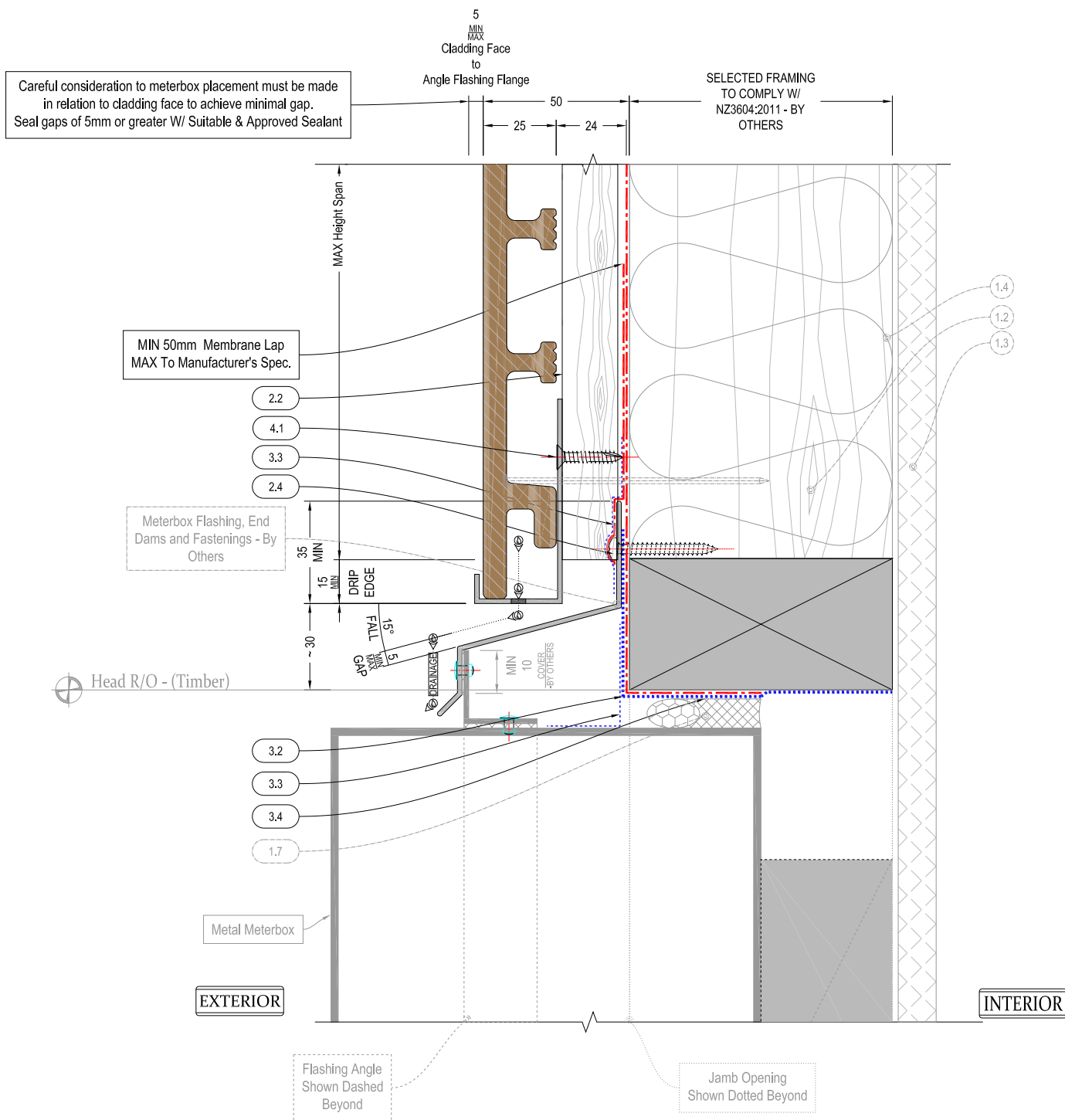
v1.2

Revision Date

Dec. 2019

Scale @ A4:

1:2



1. Structure : By Others

- 1.1 Concrete
- 1.2 Timber
- 1.3 Internal Lining
- 1.4 Insulation
- 1.5 Fibre Cement RWU
- 1.6 Window Joinery
- 1.7 Approved Sealant on PEF Rod to suit gap

2. Cladding Elements : Supply By SPS

- 2.1 InnoClad Horizontal Shiplap Weatherboard Cladding
- 2.2 H3.2 45x20mm Vertical Timber Cavity Battens - Nailed/Screwed @ Manuf. Spec. $\frac{1}{4}$
- 2.3 AF3000H1 : J-Mould
Alu, Extrusion
- 2.4 AF4000H9 : Drained J-Mould
Alu, Extrusion

- 2.5 AF3000H8-Internal W-Corner
Alu, Extrusion
- 2.6 AF3000H2 : External Corner
Alu, Extrusion
- 2.7 AF#####- 2pc J-Mould
Alu, Extrusion
- 2.8 AF#####- Inter-storey Flashing
Alu, Extrusion
- 2.9 GA+HSL-V01 - EPDM Joint Closer Gasket

3. Suggested Membrane & Tapes :

- Supply By Proclima
- 3.1 Solitex Extasana - Weatherightness Membrane
- 3.2 Tescon Extoseal Sill Tape -150mm
- 3.3 Tescon Extora Fabric Flashing Tape -60mm
- 3.4 Tescon AdhisoWS - Wet Seal Adhesion Tape

4. Fixings

- 4.1 SS304 8gx20mm CSK ST Screw #2 Sq.Dr
- 4.2 SS304 8gx35mm PH ST Screw #2 Sq.Dr
- 4.3 SS304 10g x40 WingNek T138 - T20.Dr

5. Flashings

- 5.1 AL 1.6mm Custom Folded

SPS BUILDING

ROOFING & BUILDING PRODUCTS

SPS Roofing and Building Limited
220B Bush Road, Rosedale, Auckland, New Zealand,
T : +64 9 415 2669 | www.spsbuilding.co.nz

Sheet Title:

Meterbox Head
Typical Section Detail
Horizontal Shiplap Cladding

Sheet Status:

Architectural
Resource
For Information & Design

Sheet Number:

IC-H20-015

Revision:

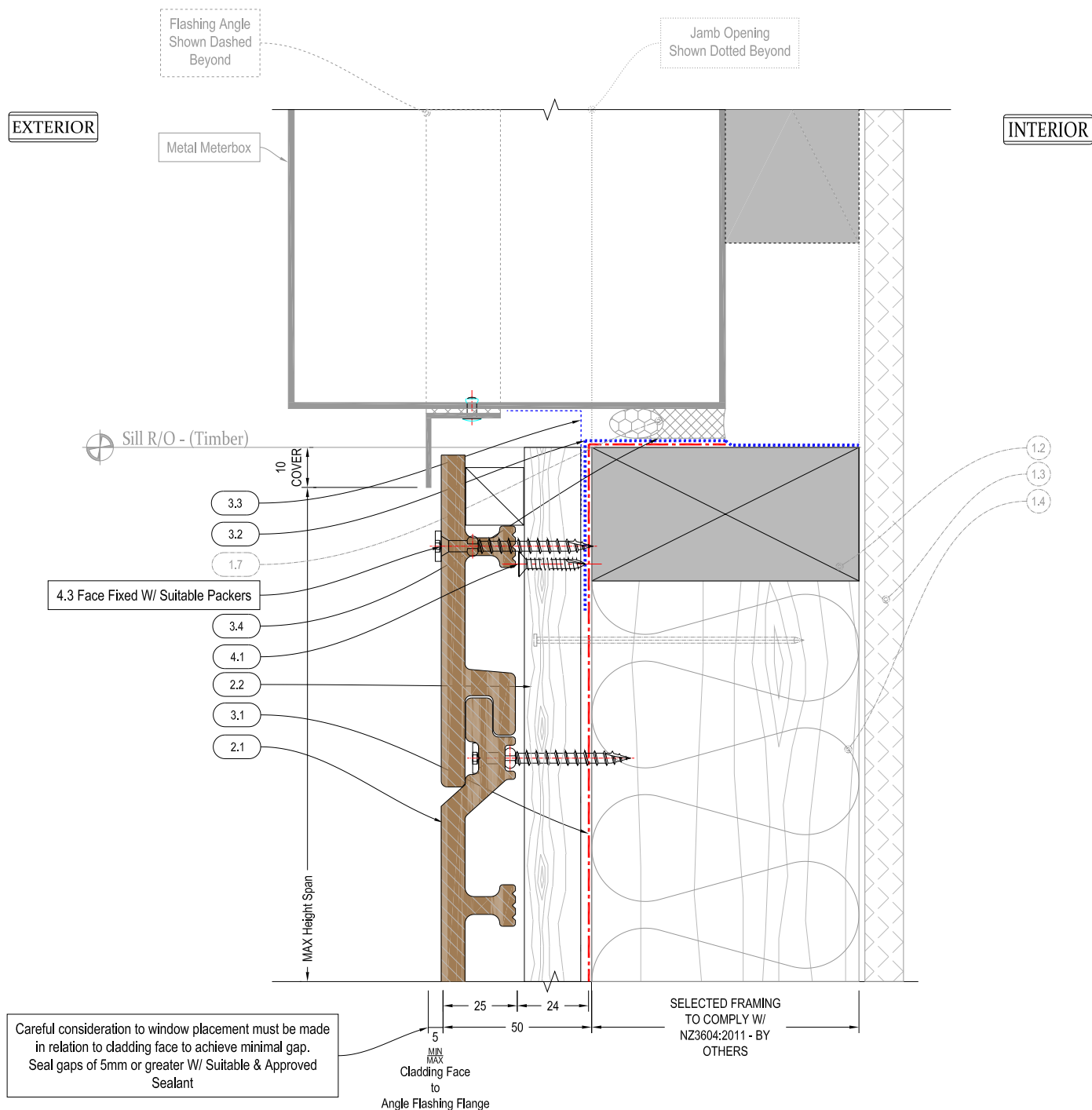
v1.2

Revision Date

Dec. 2019

Scale @ A4:

1:2



1. Structure : By Others

- 1.1 Concrete
- 1.2 Timber
- 1.3 Internal Lining
- 1.4 Insulation
- 1.5 Fibre Cement RWU
- 1.6 Window Joinery
- 1.7 Approved Sealant on PEF Rod to suit gap

2. Cladding Elements : Supply By SPS

- 2.1 InnoClad Horizontal Shiplap Weatherboard Cladding
- 2.2 H3.2 45x20mm Vertical Timber Cavity Battens - Nailed/Screwed @ Manuf. Spec $\frac{1}{4}$ / $\frac{1}{4}$
- 2.3 AF3000H1 : J-Mould
- 2.4 AF4000H9 : Drained J-Mould

- 2.5 AF3000H8-Internal W-Corner
- 2.6 AF3000H2 : External Corner
- 2.7 AF#####- 2pc J-Mould
- 2.8 AF#####- Inter-storey Flashing
- 2.9 GA-HSL-V01 - EPDM Joint Closer Gasket

3. Suggested Membrane & Tapes :

- Supply By Proclima
- 3.1 Solitex Extasana - Weatherlightness Membrane
- 3.2 Tescon Extoseal Sill Tape -150mm
- 3.3 Tescon Extora Fabric Flashing Tape -60mm
- 3.4 Tescon AdhisoWS - Wet Seal Adhesion Tape

4. Fixings

- 4.1 SS304 8gx20mm CSK ST Screw #2 Sq.Dr
- 4.2 SS304 8gx35mm PH ST Screw #2 Sq.Dr
- 4.3 SS304 10g x40 WingNek T138 - T20.Dr

5. Flashings

- 5.1 AL, 1.6mm Custom Folded

SPS BUILDING

ROOFING & BUILDING PRODUCTS

SPS Roofing and Building Limited
220B Bush Road, Rosedale, Auckland, New Zealand,
T : +64 9 415 2669 | www.spsbuilding.co.nz

Sheet Title:

Meterbox Sill
Typical Section Detail
Horizontal Shiplap Cladding

Sheet Status:

Architectural
Resource
For Information & Design

Sheet Number:

IC-H20-016

Revision:

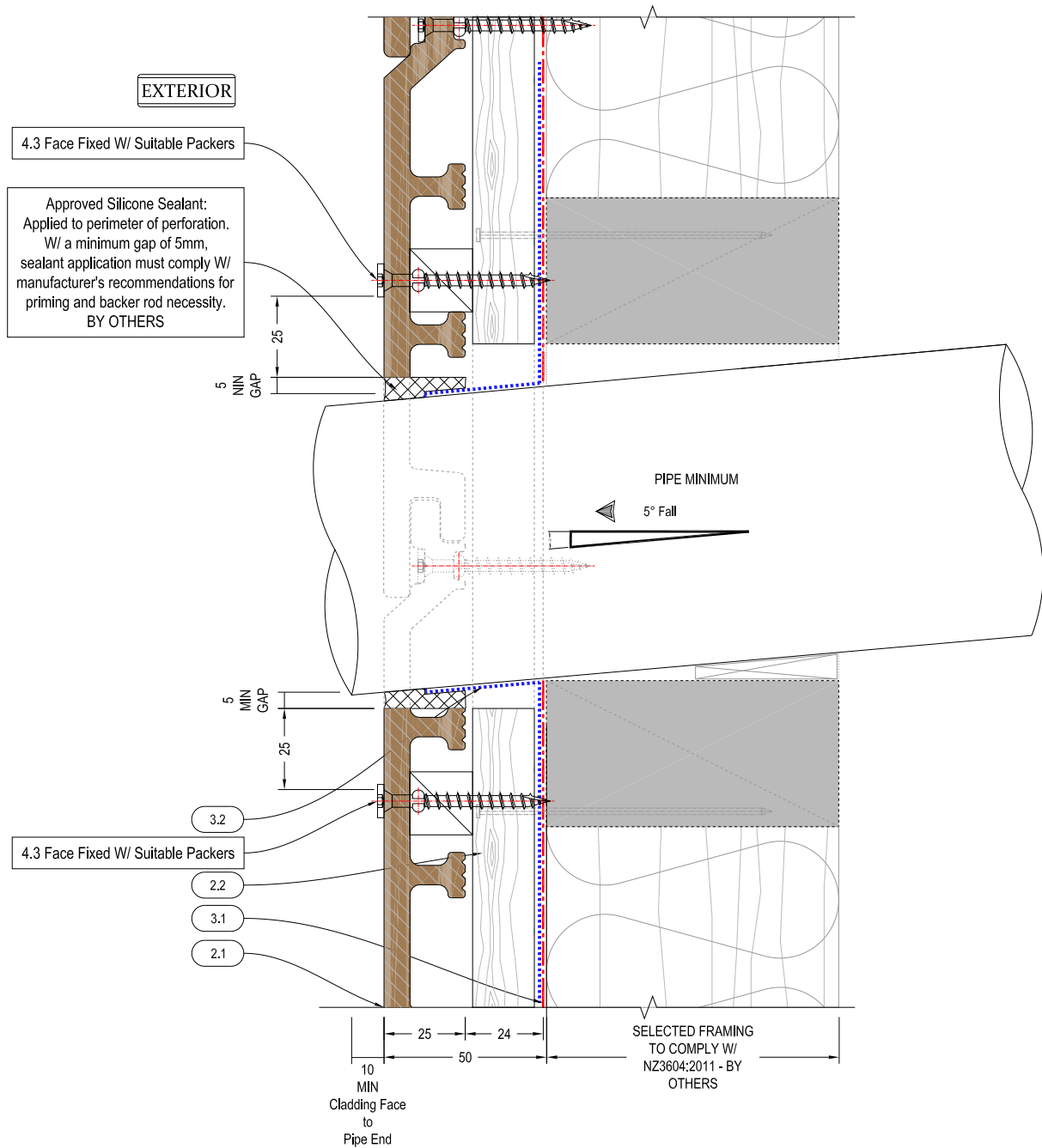
v1.2

Revision Date

Dec. 2019

Scale @ A4:

1:2



1. Structure : By Others

- 1.1 Concrete
- 1.2 Timber
- 1.3 Internal Lining
- 1.4 Insulation
- 1.5 Fibre Cement RWU
- 1.6 Window Joinery
- 1.7 Approved Sealant on PEF Rod to suit gap

2. Cladding Elements : Supply By SPS

- 2.1 InnoClad Horizontal Shiplap Weatherboard Cladding
- 2.2 H3.2 45x20mm Vertical Timber Cavity Battens - Nailed/Screwed @ Manuf. Spec ϵ/ϵ
- 2.3 AF3000H1 : J-Mould
Alu, Extrusion
- 2.4 AF4000H9 : Drained J-Mould
Alu, Extrusion

2.5 AF3000H8-Internal W-Corner

- Alu, Extrusion
- 2.6 AF3000H2 : External Corner
Alu, Extrusion
- 2.7 AF#####-2pc J-Mould
Alu, Extrusion
- 2.8 AF#####-Inter-storey Flashing
Alu, Extrusion
- 2.9 GA-HSL-V01 - EPDM Joint Closer Gasket

3. Suggested Membrane & Tapes :

- Supply By Proclima
- 3.1 Solitex Extasana - Weatherlightness Membrane
- 3.2 Tescon Extoseal Sill Tape -150mm
- 3.3 Tescon Extora Fabric Flashing Tape -60mm
- 3.4 Tescon AdhisoWS - Wet Seal Adhesion Tape

4. Fixings

- 4.1 SS304 8gx20mm CSK ST Screw #2 Sq,Dr
- 4.2 SS304 8gx35mm PH ST Screw #2 Sq,Dr
- 4.3 SS304 10g x40 WingNek T138 - T20,Dr

5. Flashings

- 5.1 AL, 1.6mm Custom Folded

SPS BUILDING

ROOFING & BUILDING PRODUCTS

SPS Roofing and Building Limited
220B Bush Road, Rosedale, Auckland, New Zealand,
T : +64 9 415 2669 | www.spsbuilding.co.nz

Sheet Title:

Pipe Penetration (Circular)
Typical Section Detail
Horizontal Shiplap Cladding

Original In Colour

Sheet Status:

Architectural
Resource
For Information & Design

Sheet Number:

IC-H20-017

Revision:

v1.2

Revision Date

Dec. 2019

Scale @ A4:

1:2