

# ACME FIRE RATED JOINERY PRODUCT PRESENTATION

CS 77-FP



Pierres Vives, the new departmental records building for French department Hérault, in Montpellier

# PASSIVE FIRE PROTECTION MATTERS

## Top safety priorities:

- Evacuation of the people inside the building
- Preventing the fire from spreading inside or outside the building



## Reynaers FP systems are specially designed to:

- Provide escape & entrance routes
- Protect people on the other side of the fire by (thermally) insulating the fire
- Preventing fire from spreading by compartmentation



# FIRE RESISTANCE ESSENTIALS

## Criteria



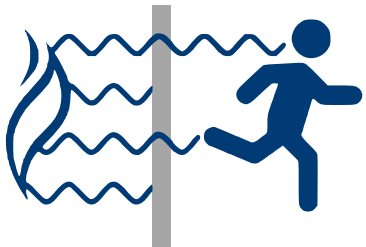
### Integrity (E)

- **Stability of the construction during fire**
- **No flames on the protected side**  
*(no requirements towards insulation)*



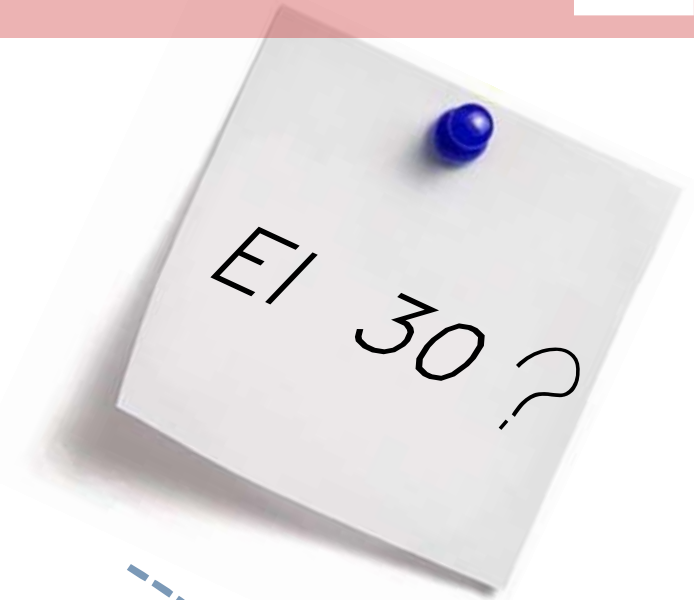
### Insulation (I)

- **Limited temperature increase on escape route**  
*(Also requires E criteria)*



### Radiation (W)

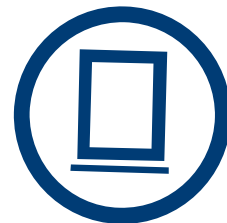
- **Limited radiation insulation on escape route**  
*(Also requires E criteria)*



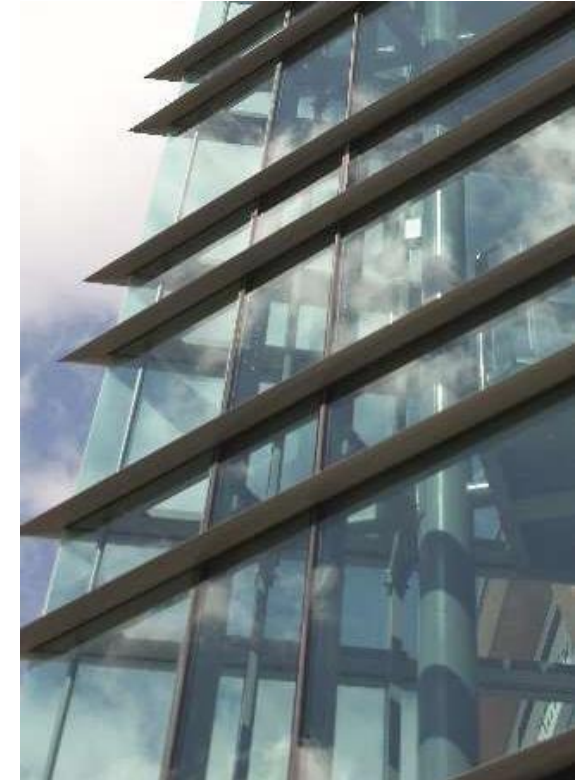
Always combined with  
a classification time,  
e.g. 30 (minutes)



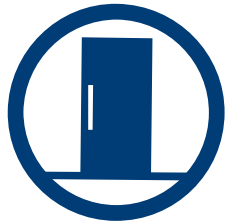
DOORS



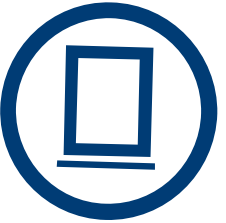
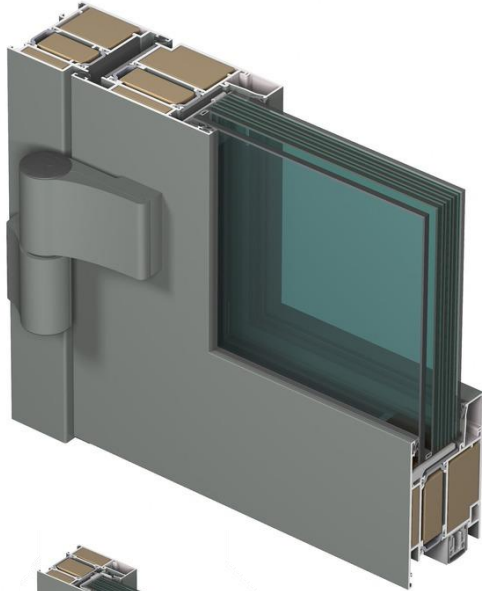
PARTITION WALLS



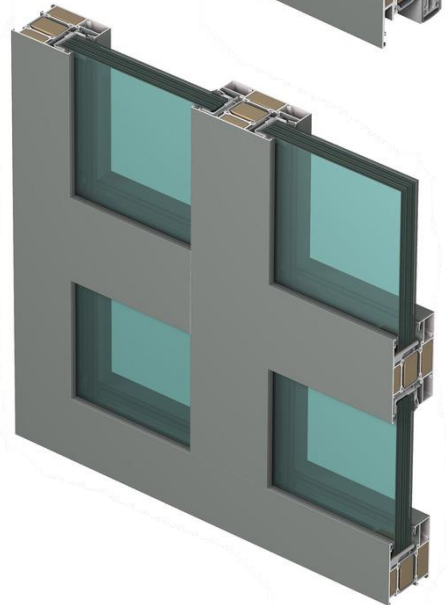
CURTAIN WALLS



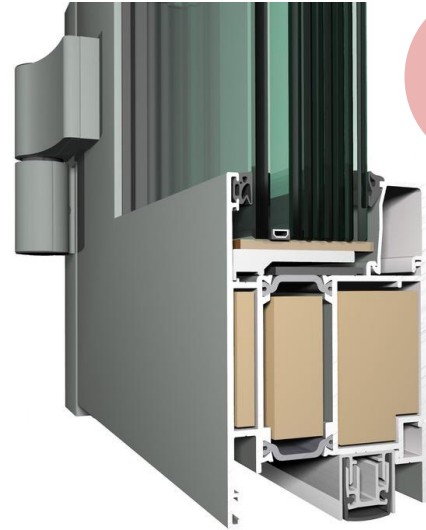
DOORS



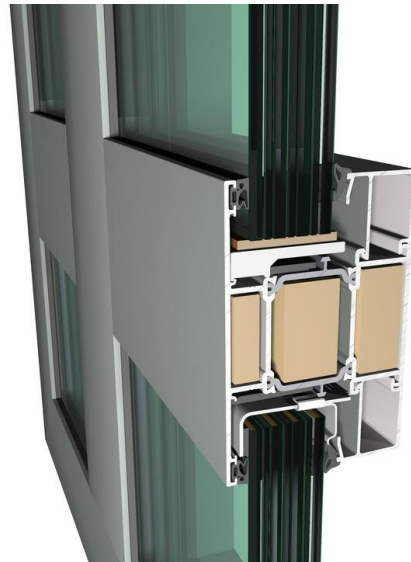
PARTITION WALLS



EI30



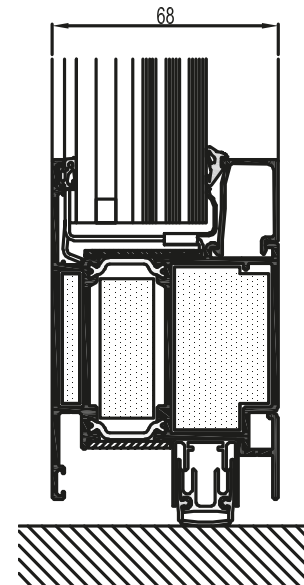
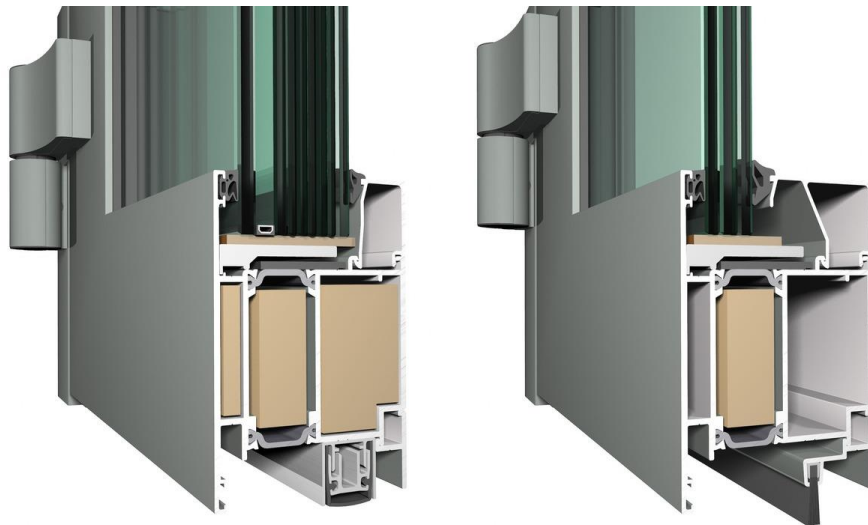
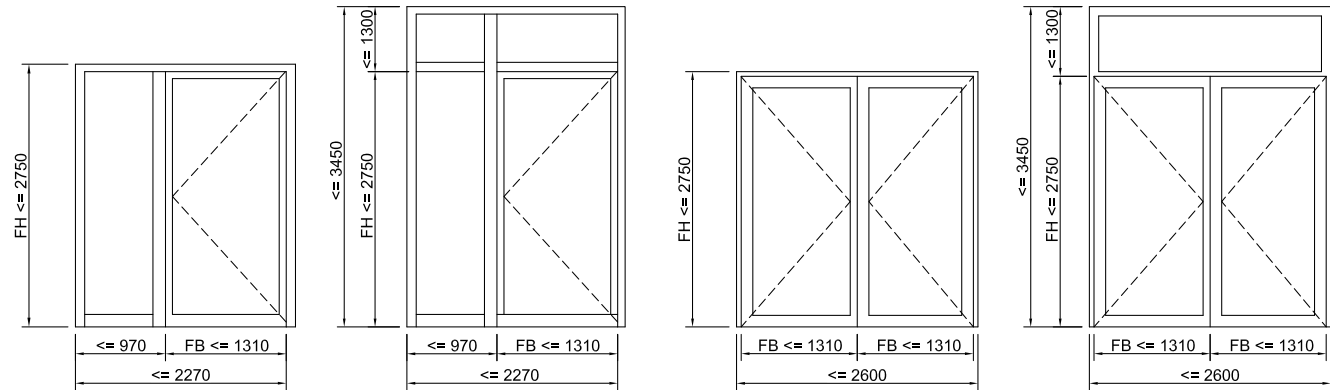
EI60





## Door configurations

- All typical types of side hung doors
- Max. leaf dimensions 1.32m(W) x 2.75m(H)
- Optionally with:
  - Panic/emergency exit functionality
  - Burglar resistance RC 2
  - Smoke control ( $S_a$  &  $S_{200}$ )
- Integration in Reynaers Curtain Wall System (CW 50-FP30)



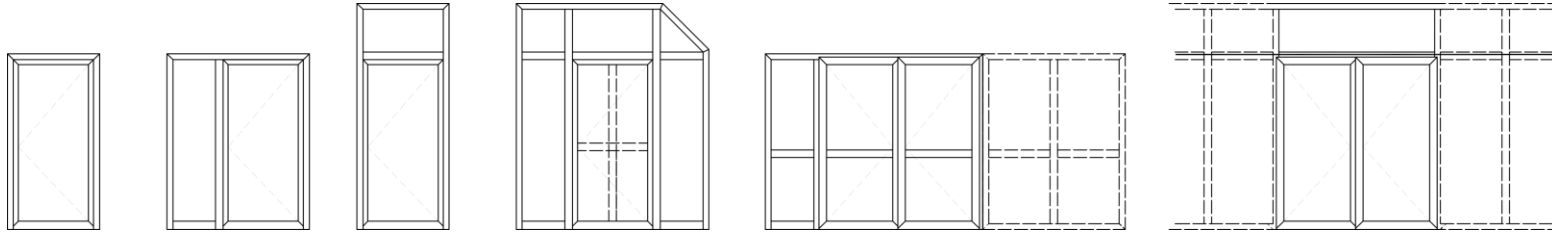
## Floor details

- Offering different types of floor connection details: Brush, automatic seal, threshold profile,...
- All to be combined with different leaf styles (vent crimped all around or bottom door rail)

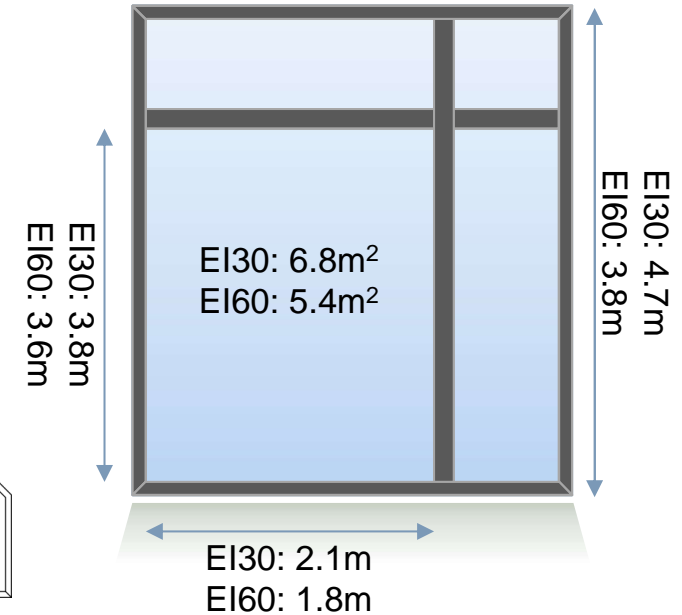
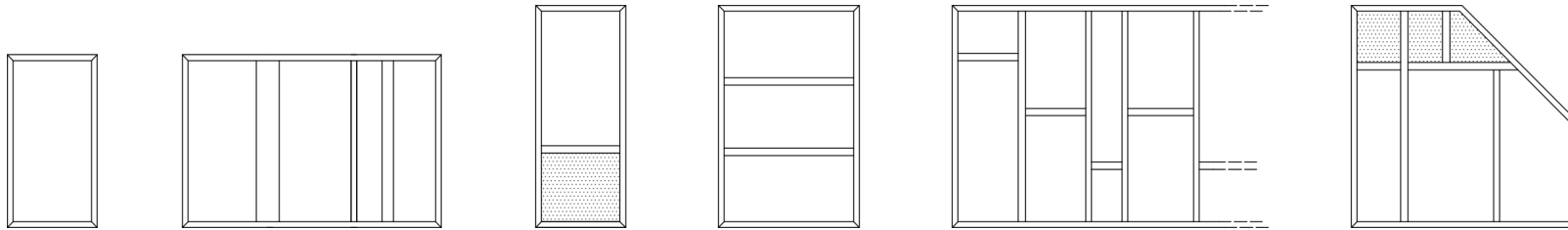
## Approved configurations



DOORS



PARTITION WALLS



### Glazed partition walls

- Optionally with integrated doors
- EI 30: element height up to 4.7m  
EI 60: element height up to 3.8m
- Glass sizes up to 6.8m<sup>2</sup> (EI 30) and 5.4m<sup>2</sup> (EI 60)  
(depending on glass supplier and composition)

### Certified Glass Suppliers

Vetrotech Saint-Gobain – Contraflam  
Pilkington – Pyrostop  
AGC Glass - Pyrobel



**WINDOWS**



**DOORS**



Sapphire black



Eclipse

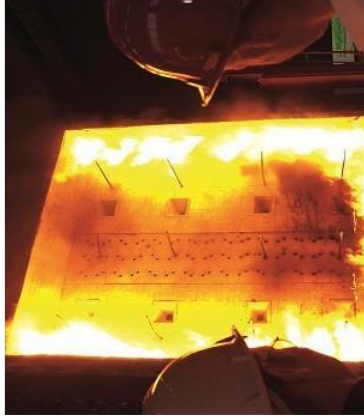


Moonlight white



Lithium





# **FIRE TECHNICAL OPINION**

## **FC10138-001**

**FIRE RESISTANCE OF REYNEARS CS 77-FP GLAZED SCREENS AND DOORSETS**

**CLIENT**

Reynaers Aluminium N.V./S.A.  
Oude Liersebaan 266  
2570 Duffel  
Belgium