

# ALUCOBOND®

## WORLD OF COLOURS

Outstanding quality colours and surfaces



**3A**  
COMPOSITES

## YOUR FAVOURITES

"These are your most favourite colours. You have been choosing them over and over again. And millions of square metres installed are meeting millions of people each day. One can not go wrong with this selection of solid and metallic colours. Select solid ones to achieve a tuned down, uniform effect. Or play with different appearance of metallic colours and gloss under various light conditions and viewing angles. Both schemes are proven. Both are the foundation and starting point of the colours scheme you are contemplating for your building."

## METALLIC COLOURS



**Dark grey metallic** | 505



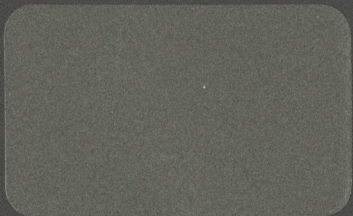
**Smoke silver metallic** | 501



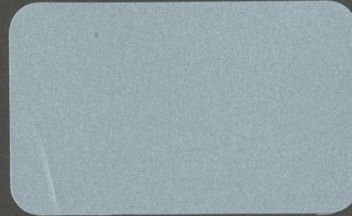
**Silver metallic** | 500



**Champagne metallic** | 503



**Grey metallic** | 502



**Grey blue metallic** | 603



**Sunrise silver metallic** | 600



**Brilliant metallic** | 602

## SOLID COLOURS



**Black** | 326



**Anthrazit grey** | 105



**Fashion grey** | 460



**Light grey** | 104



**Bronze metallic** | 504



**Daytona gold** | 8703



**Nevada copper** | 8705



**Jade green metallic** | 9329



**Classic bronze metallic** | 9604



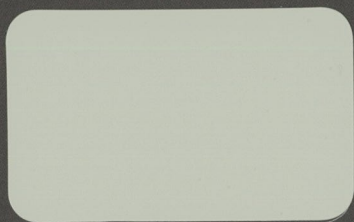
**Gold metallic** | 601



**Copper metallic** | 8704



**Seafoam green metallic** | 604



**Beige** | 103



**Cream** | 102



**Pure white 10** | 100



**White 16** | 101

## ADD SOME SPICE

"These colours are rarely used to clad an entire building. But why not use them to play, accentuate and create distinction? Whether it is a daring Lemon, a flashy Red or an Intense Blue, use these colours and effects to create unique appearance, moods and reactions of the users or bypassers. Create the Difference."

## VIBRANT COLOURS



**Ruby** | 8202



**Orange** | 8210



**Emerald green** | 691



**Navy blue** | 9336



**Red** | 8201



**Lemon** | 8200



**Lime** | 8313



**Intense blue** | 3191

### GENERAL INFORMATION

The fluorocarbon (PVDF) coating is applied to the aluminium coil prior to lamination into ALUCOBOND®, using a continuous coil coating process. The multiple layers are individually cured at temperatures of between 200 - 260 °C. The quality of the coating is tested according to standards established by E.C.C.A. (European Coil Coating Association) of which 3A Composites is a member. Fluorocarbon (PVDF) coating systems combine good formability and excellent surface durability. They are extremely resistant against weathering, strong solar radiation and pollution attack. The colour reproduction in this chart is subject to printing limitation. For exact colour matching, request for actual colour samples.

The standard gloss for colours is between 30%- 40% according to Gardner Scale.

Minimum order quantities apply.

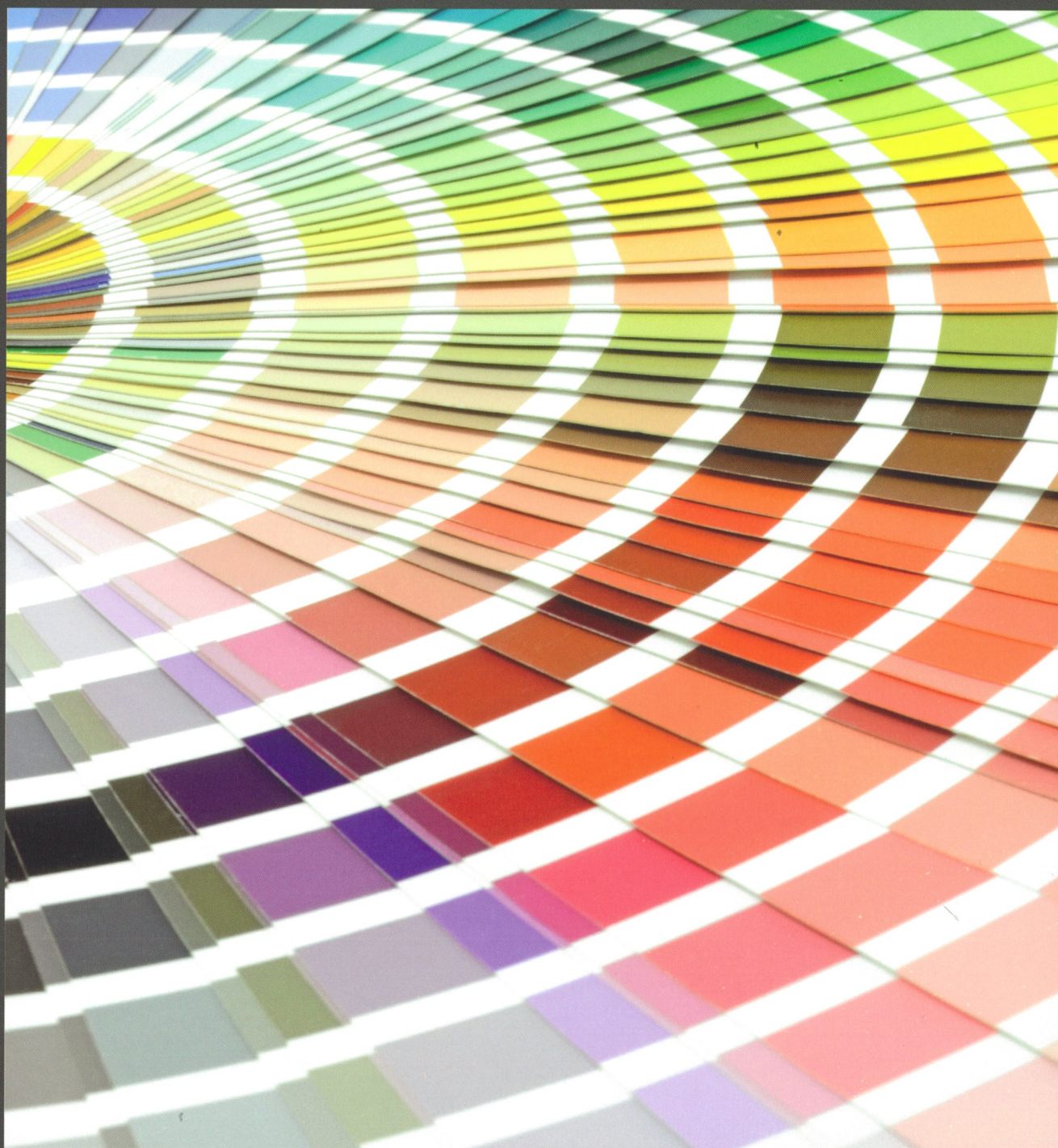
For more information and available specification please refer to the manufacturer or your nearest ALUCOBOND® representative.

### ONLY FOR METALLIC COLOURS

To avoid possible reflection differences, it is recommended to install the panels in the same direction as marked on the protective peel-off-foil. Colour variations may occur between panels originating from different production batches. To ensure colour consistency, the total requirement for a project must be placed in one order.

## WE'LL DO IT FOR YOU

"Haven't found what you're looking for? Let us know what it is and we'll create it for you. We regularly match the colours you need, even if they're not on our charts. After all, our mission is to help your vision to materialise. We'll work hard to make anything possible."



## WHATEVER YOU WANT IT TO BE

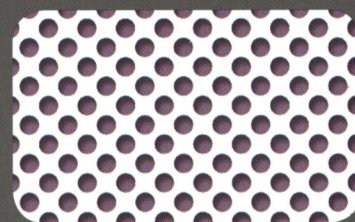
"Have you ever thought why you should be restricted to using one-coloured-panels all the time? Wasn't there this project where you wanted a specific pattern to be visible across the facade? Why should you accept the limitation of traditional colour application technologies? The time has come for you to design the facade and not have to select it. The ultimate creativity toolset- look no further."



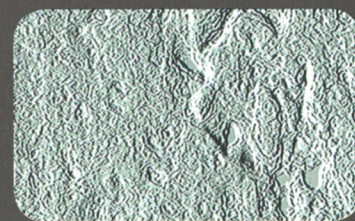
Dream



Red tiger



Perforated look



Granite relief

**ALUCOBOND**<sup>®</sup> design

# NOT ONLY COLOURS, BUT ALSO EXCLUSIVE FINISHES

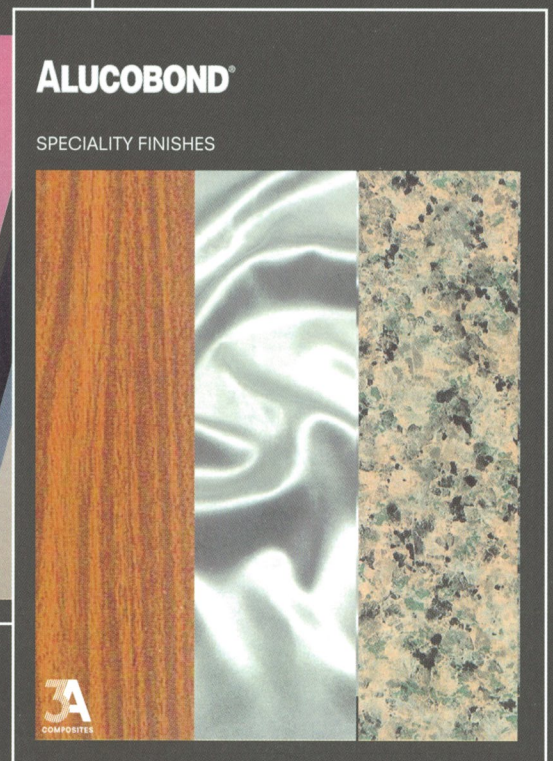
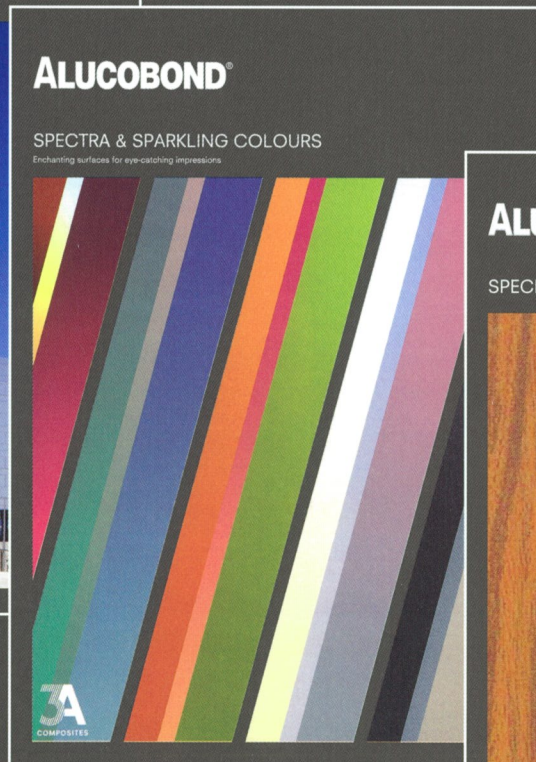
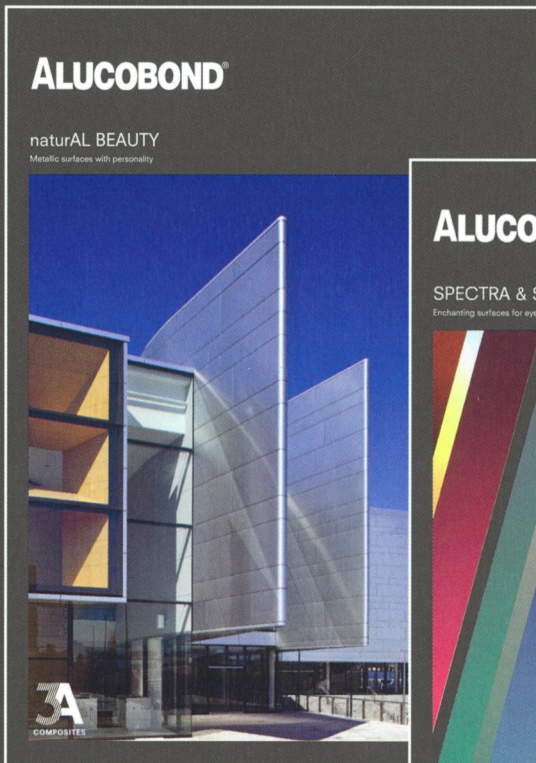
"There is this idea in your mind about a building that has a very strong character and message to send. But what to dress it in?"

Wood look: When an earthy, warm tone is needed. It will reveal its woodlook to the close spectator and deliver a soft appearance all around.

NaturAL: This is not a colour, this is the real thing. Raw Aluminium at its best.

Anodised look: Isn't the world too glossy and shiny already? This series will give you a very matt metallic look.

Spectra: What if you created a building that looks different to every single person looking at it even at the same point in time? Chameleons would want that!



Create the difference.

**ALUCOBOND**

**ALUCOBOND (FAR EAST) PTE LTD**

Tower 1,  
6 Shenton Way #40-05  
Singapore 068809  
Tel: (65) 6303 9750  
Fax: (65) 6303 9751  
Email: sales@alucobond.com.sg  
www.alucobond.com.sg

**3A COMPOSITES MIDDLE EAST (BRANCH)**

Almas Tower, JLT  
P.O. Box 340 505, Dubai  
U.A.E  
Mob: (971) 50 5574676  
Email: markus.setz@3AComposites.com  
www.alucobond.com

**3A COMPOSITES INDIA PVT. LTD.**

Unit 852, 5th Floor,  
Solitaire Corporate Park, Andheri (East)  
Mumbai 400 093  
India  
Tel: (91) 22 4005 4500  
Fax: (91) 22 4010 4132  
Email: info.india@alucobond.com  
www.alucobond.in

**3A COMPOSITES (CHINA) LTD.**

298 East Kangqiao Road  
Pudong, Shanghai 201319,  
China  
Tel: (86) 21 5813 5353  
Fax: (86) 21 5813 5333  
Email: info.china@alucobond.com  
www.alucobond.com.cn

**3A COMPOSITES GmbH**

Alusingen-Platz 1  
78224 Singen,  
Germany  
Tel: (49) 7731 802 347  
Fax: (49) 7731 802 845  
Email: info.eu@alucobond.com  
www.alucobond.com

**3A COMPOSITES USA, Inc.**

3480 Taylorsville Highway,  
Statesville, N.C.28625  
U.S.A  
Tel: (1) 704 872-8974  
Fax: (1) 704 878-2708  
Email: info.usa@3AComposites.com  
www.AlucobondUSA.com

